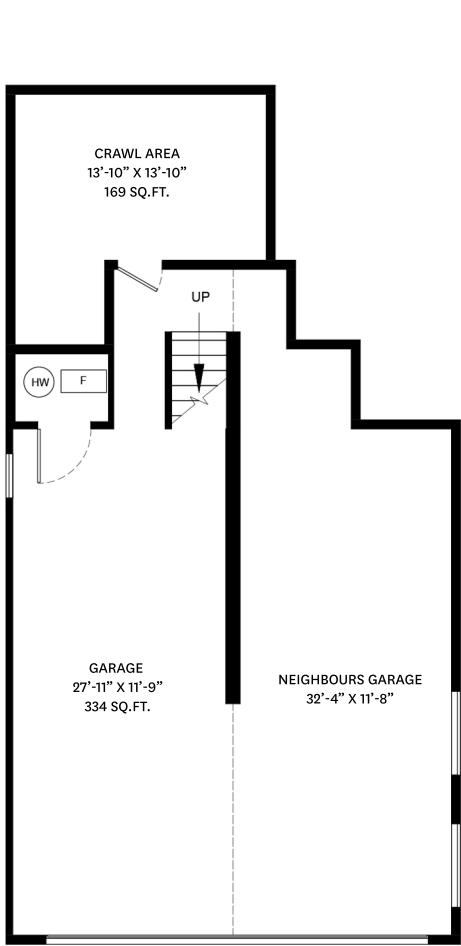
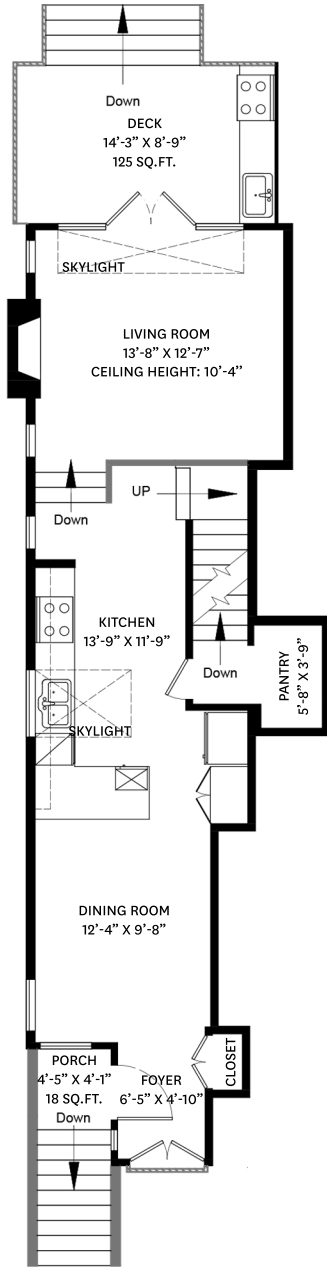


# 3243 WEST 6TH AVENUE, VANCOUVER, BC

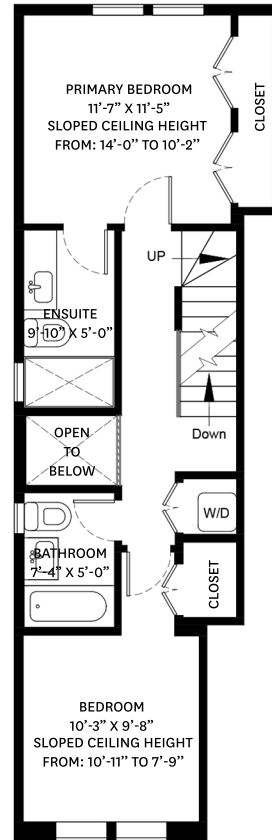
MAIN FLOOR TOTAL:	652 SQ.FT.	GARAGE	334 SQ. FT.
UPPER FLOOR TOTAL:	565 SQ.FT.	CRAWL AREA:	169 SQ. FT.
TOP FLOOR TOTAL:	253 SQ.FT.	DECK:	125 SQ. FT.
<b>TOTAL:</b>	<b>1,470 SQ.FT.</b>	PORCH:	18 SQ. FT.



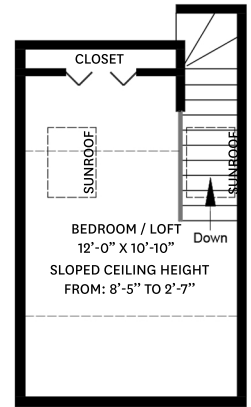
**GARAGE**  
Ceiling Height: 8'-4"



**MAIN FLOOR PLAN**  
Ceiling Height: 8'-5"



**UPPER FLOOR PLAN**  
Ceiling Height: 8'-4"



**TOP FLOOR PLAN**  
Ceiling Height: 8'-5"



**stilhavn**  
REAL ESTATE SERVICES

**Donald McDougall**  
778-998-4820  
donald@donalddougall.ca

floor plan designed by  
ishot.ca Enterprises Inc.  
604-368-7979  
http://ishot.ca

THE FLOOR PLAN ILLUSTRATION IS NOT SUITABLE FOR CONSTRUCTION/ ARCHITECTURAL PURPOSES.  
MEASUREMENTS ARE APPROXIMATE AND MAY NOT BE TO SCALE. E&O INSURED.