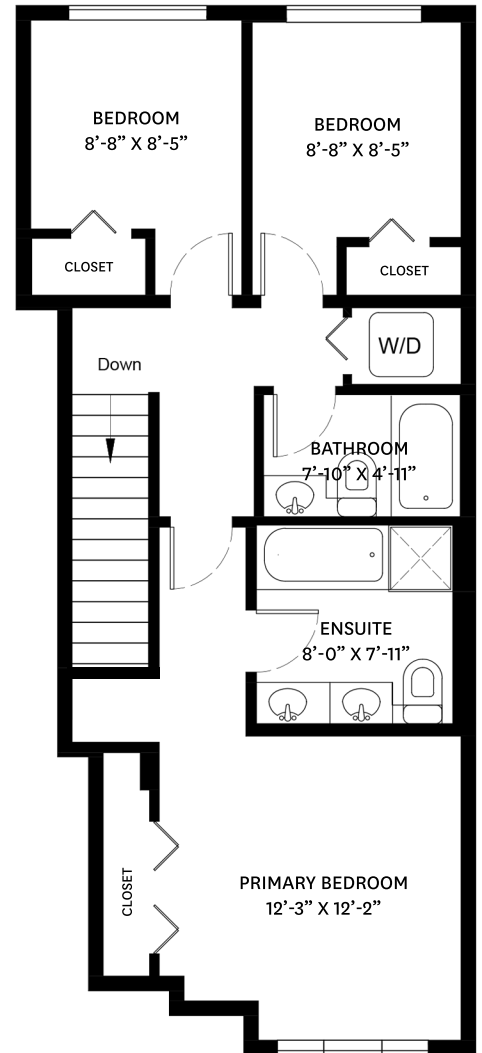
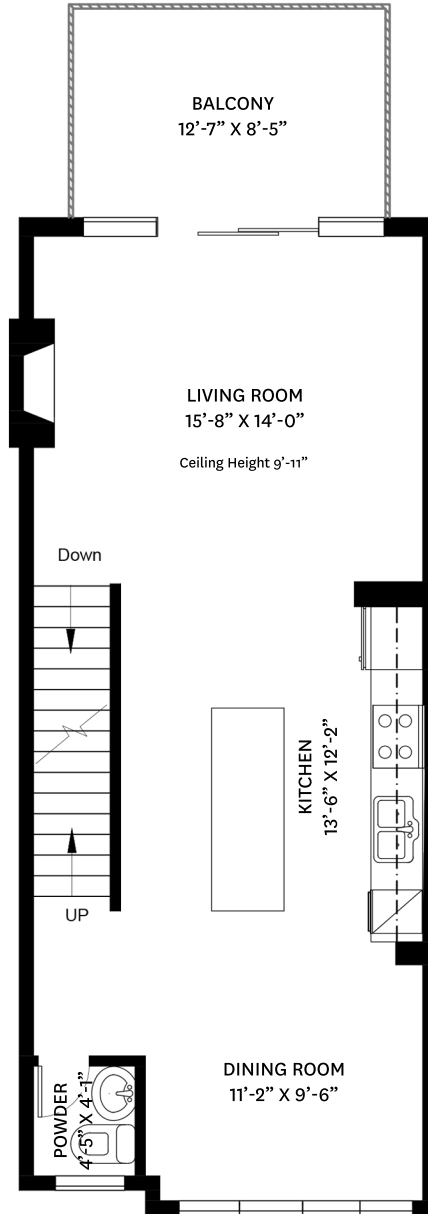
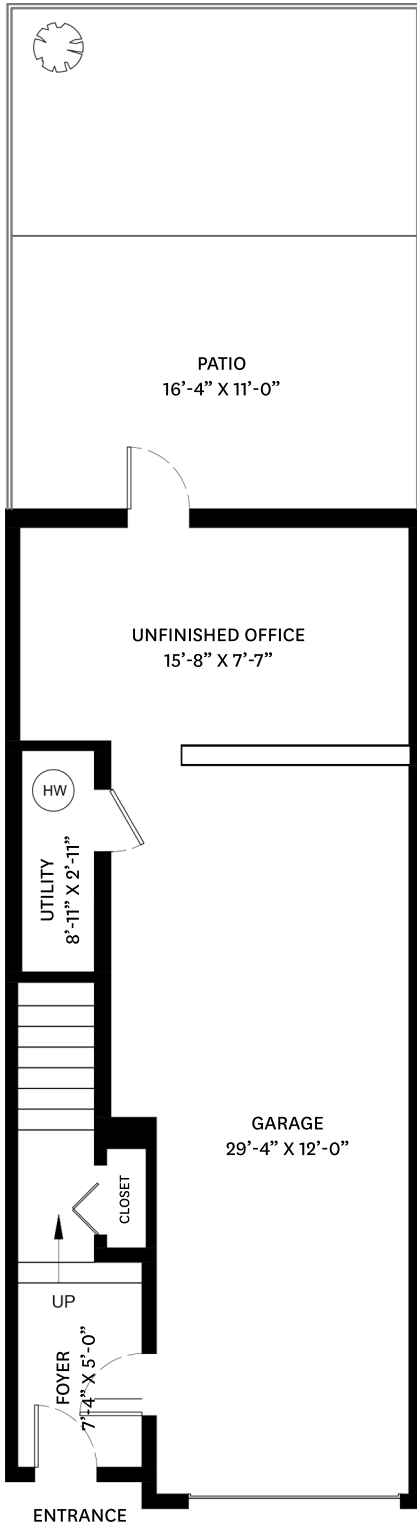


58-1125 KENSAL PLACE, COQUITLAM, BC



LOWER FLOOR TOTAL:	91 SQ.FT.
MAIN FLOOR TOTAL:	652 SQ.FT.
UPPER FLOOR TOTAL:	680 SQ.FT.
TOTAL:	1,423 SQ.FT.
UNFINISHED OFFICE:	136 SQ.FT.
PATIO:	180 SQ.FT.
BALCONY:	105 SQ.FT.
GARAGE:	399 SQ.FT.
UTILITY:	26 SQ.FT.

LOWER FLOOR PLAN
Ceiling Height: 8'-0"

MAIN FLOOR PLAN
Ceiling Height: 8'-11"

UPPER FLOOR PLAN
Ceiling Height: 7'-11"



stilhavn
REAL ESTATE SERVICES

Donald McDougall
778-998-4820
donald@donaldmcdougall.ca

floor plan designed by
ishot.ca Enterprises Inc.
604-368-7979
http://ishot.ca