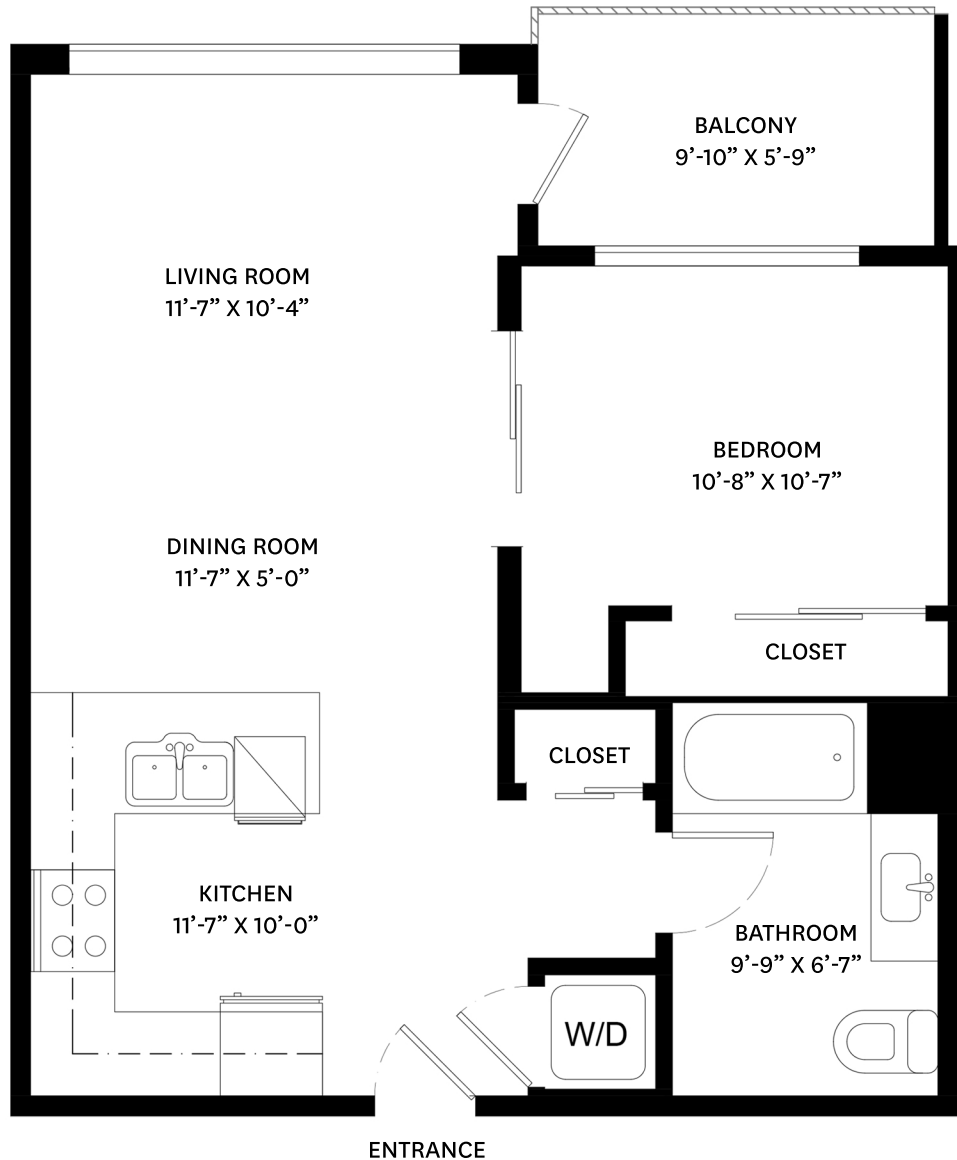


606-133 ESPLANADE EAST, NORTH VANCOUVER, BC

MAIN FLOOR TOTAL: 566 SQ.FT.
BALCONY: 57 SQ. FT.



MAIN FLOOR PLAN
Ceiling Height: 8'-0"



stilhavn
REAL ESTATE SERVICES

Donald McDougall
778-998-4820
donald@donaldmcdougall.ca

floor plan designed by
ishot.ca Enterprises Inc.
604-368-7979
<http://ishot.ca>

THE FLOOR PLAN ILLUSTRATION IS NOT SUITABLE FOR CONSTRUCTION/ ARCHITECTURAL PURPOSES.
MEASUREMENTS ARE APPROXIMATE AND MAY NOT BE TO SCALE. E&O INSURED.