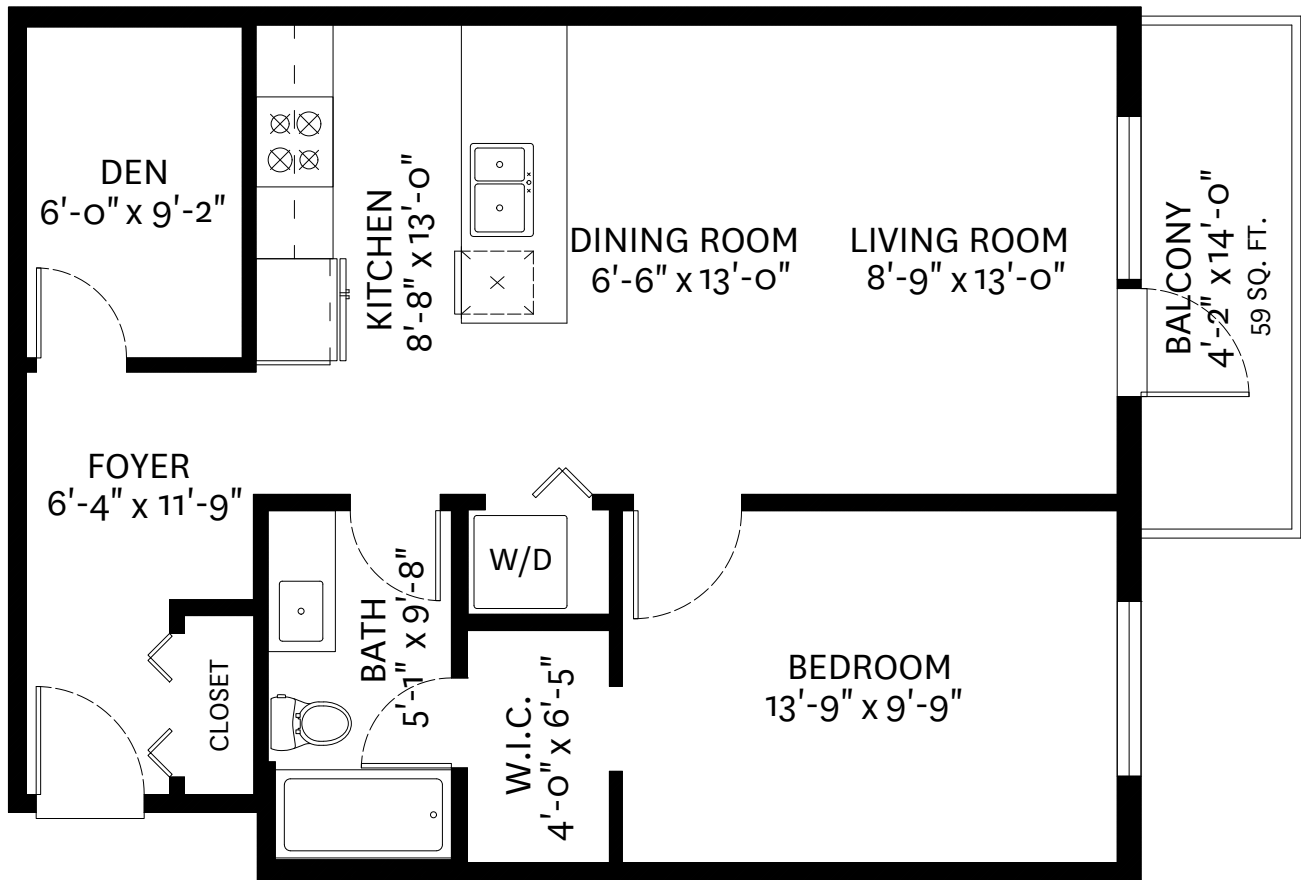


#501-2214 Kelly Avenue, Port Coquitlam, BC

Finished Area: 750 SQ. FT.

Balcony: 59 SQ. FT.

Total: 809 SQ. FT.



FLOOR PLAN
Ceiling Height: 9'-11"



floor plan designed by
ishot.ca Enterprises Inc.
604-368-7979
<http://ishot.ca>