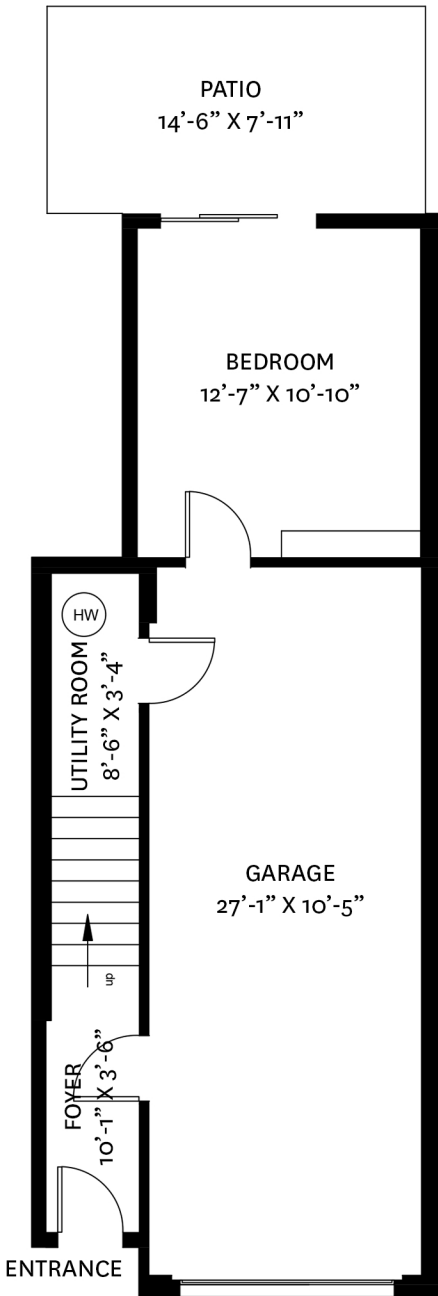


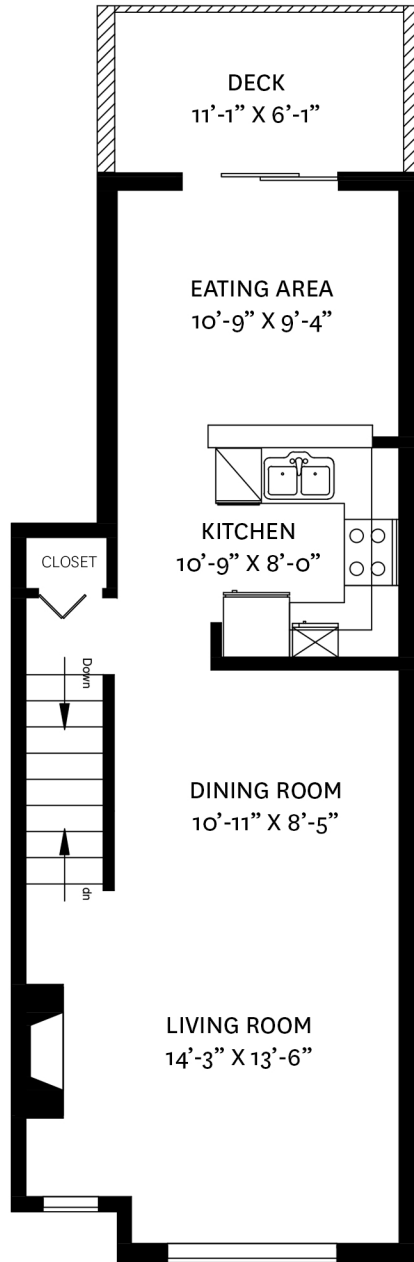
11 - 8778 159TH STREET, SURREY, BC

LOWER FLOOR TOTAL: 269 SQ. FT.
 MAIN FLOOR TOTAL: 602 SQ. FT.
 UPPER FLOOR TOTAL: 523 SQ. FT.
 TOTAL: 1,394 SQ. FT.

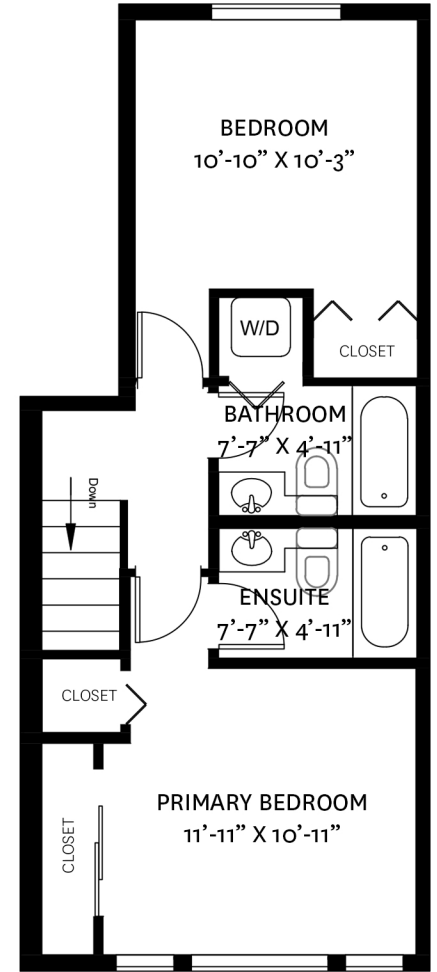
PATIO: 115 SQ. FT.
 DECK: 68 SQ. FT.
 GARAGE: 328 SQ. FT.



LOWER FLOOR PLAN
 Ceiling Height: 7'-11"



MAIN FLOOR PLAN
 Ceiling Height: 8'-0"



UPPER FLOOR PLAN
 Ceiling Height: 7'-10"

