

4144

GALILEO COMMON

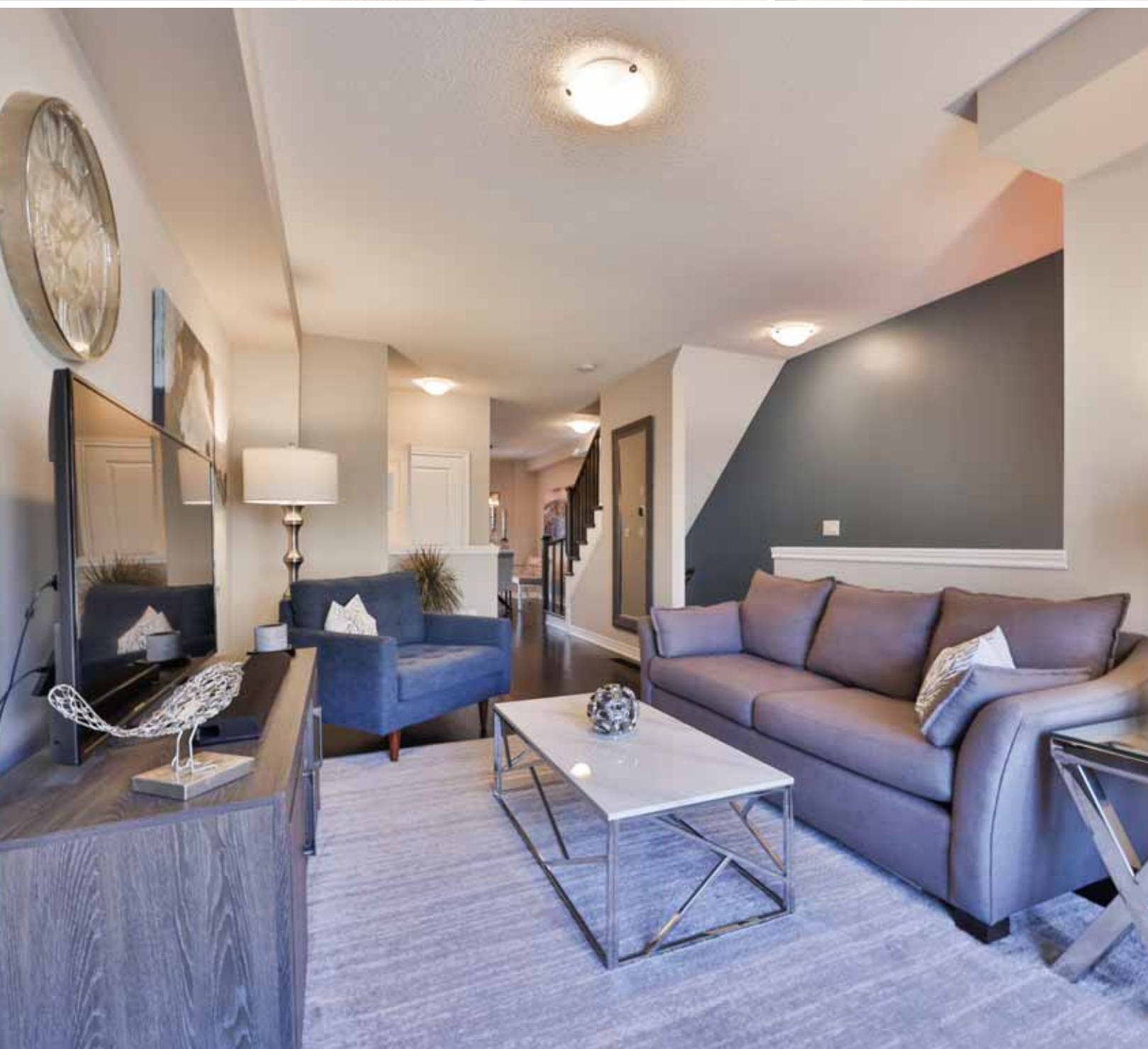
SOUTH EAST BURLINGTON



MACKEY &
McCORMICK
BLAIRANDPETER.CA













ROOM DETAILS

MAIN LEVEL

LIVING ROOM

- Hardwood Flooring
- Walk-In Box Window
- 9' Ceilings
- Custom Blinds

KITCHEN

- Hardwood Flooring
- 9' Ceilings
- Pot Lighting
- Granite Countertop
- Stainless Steel Frigidaire Fridge
- Stainless Steel Frigidaire Stove
- Stainless Steel Frigidaire Dishwasher
- Stainless Steel Microwave
- Glass Subway Tile Backsplash
- Double Stainless Steel Sink
- Detail Glass Corner Cabinet
- Crown Molding on Cabinets

EAT-IN AREA

- Hardwood Flooring
- 9' Ceilings
- Walkout to Private Deck

BATHROOM

- 2 Piece
- Ceramic Tile Flooring
- 9' Ceilings
- Pedestal Sink
- New Designer Lighting & Mirror

UPPER LEVEL

PRIMARY BEDROOM

- Broadloom
- His & Her Closet with Custom Wardrobe
- Ceiling Fan & Light
- Custom Blinds
- Ensuite

ENSUITE

- 3 Piece
- Ceramic Tile Flooring
- Granite Countertop
- Large Walk-In Shower with Rain Showerhead
- New Designer Lighting & Mirror

BEDROOM

- Broadloom
- Double Clothes Closet
- Ceiling Fan & Light
- Detailed Millwork Wall
- Custom Blinds

BATHROOM

- 4 Piece
- Ceramic Tile Flooring
- Granite Countertop
- Large Soaker Tub
- New Designer Lighting & Mirror

LAUNDRY

- Stacked Washer & Dryer

LOWER LEVEL

FAMILY ROOM

- Broadloom
- Double Door Walkout to Garden & Stone Terrace
- Direct Access to Garage

BATHROOM

- 2 Piece
- Ceramic Tile Flooring



WELCOME HOME

TAXES: \$3,210 / 2020
LOT SIZE: 15' x 77'
POSSESSION: 60 Days

Exquisitely decorated and immaculately maintained, this gorgeous house backs onto mature trees and offers a quiet tranquil setting - all set for you to just move in! 9 foot ceilings on main floor, hardwood floors, granite countertops, pot lights, stainless steel appliances, custom blinds and central vacuum. Finished lower level, primary bedroom with large ensuite with walk-in shower, his & her closets with extra custom wardrobe, upgraded lighting fixtures and mirrors, 2 walkouts to deck with gas BBQ hookup, stone terrace and garden. Convenient South East Burlington location. Don't miss it!

ADDITIONAL FEATURES

EXTERIOR FEATURES

- FRONT GARDEN**
- Single Car Garage
 - Single Car Driveway

BACK GARDEN

- Stone Terrace with Mature Trees & Gardens
- Complete Privacy
- Gas BBQ Hookup

OTHER FEATURES

- Central Vacuum
- Garage Door Opener & Remote





THE CITY OF BURLINGTON

The City of Burlington is located in southern Ontario on the north shore of Lake Ontario between Hamilton and Toronto.

Take a stroll on 20 km waterfront trail, explore Royal Botanical Gardens, one of North America's largest botanical gardens.

Enjoy one of the many parks including Bronte Creek Provincial Park, nature trails, and enjoy some of the most scenic landscapes found along the Niagara Escarpment.

Some of the best hiking in the world can be done in the local sections of the Bruce Trail and the Niagara Escarpment, which is a UNESCO-designated World Biosphere Reserve, as well as along the Waterfront Trail that skirts the northern shore of Lake Ontario.

You can relax and take in the Sound of Music Festival in June that features the world famous Burlington Teen Tour Band who have performed in Europe, Japan, and throughout Canada and the United States. Some other special events include Art in the Park, Lakeside Festival of Lights and Ribfest.

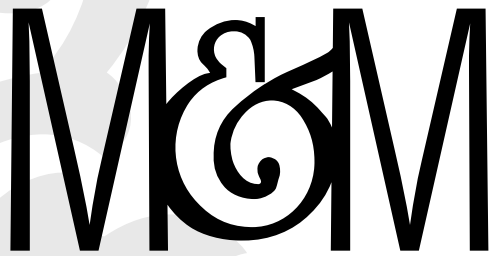
The Burlington Performing Arts Centre has become the focal point for performing arts activity in Burlington. The Centre entertains, engages, and inspires all of Burlington, maintains active engagement with the whole community, and takes a leadership role in community cultural development.

Take a tour of the Art Gallery of Burlington (AGB), it is an award winning gallery located in the heart of Burlington. They stage as many as 20 exhibitions a year and are home to an acclaimed collection of Canadian contemporary ceramics and seven arts and craft guilds.

The Joseph Brant Museum (named after the Mohawk Chief) and Ireland House at Oakridge Farm, a history museum depicting family life from the 1850s to the 1920s are also popular attractions.

Burlington has the distinction of having one of the only two naturally occurring magnetic hills in Canada. The magnetic hill is located on King Road, north of Bayview Park.

Burlington's Downtown Waterfront is evolving – it is a destination offering Burlington residents and visitors a place to discover, celebrate, play, and relax.



MACKEY &
McCORMICK

BLAIRANDPETER.CA

TOP 1% NATIONALLY



BLAIR MACKEY & PETER McCORMICK

BROKER

SALES REPRESENTATIVE



ROYAL LePAGE
CHAIRMAN'S CLUB
NATIONAL TOP 1%
LIFETIME MEMBER
2020



905.845.4267

326 LAKESHORE ROAD EAST

OAKVILLE ONTARIO L6J 1J6

BLAIR@BLAIRANDPETER.CA

PETER@BLAIRANDPETER.CA

WWW.BLAIRANDPETER.CA