



MACKEY &
MCCORMICK
REAL ESTATE
BURLINGTON, ONTARIO, CANADA

2156
REBECCA STREET
BRONTE







MAIN FLOOR
IN-LAW SUITE











WELCOME HOME

TAXES: \$5,556 / 2021
LOT SIZE: 75' x 120'
POSSESSION: 120+ Days

Gorgeous 5 bedroom, 2-storey home on a beautiful private 75' x 120' lot in desirable SW Oakville. A fabulous addition offers a unique in-law suite opportunity complete with a separate entrance, family room, eat-it kitchen, 3-piece bath and a main floor bedroom with walk-out to back garden. Could easily be incorporated back into the traditional home though if preferred. Updated bathrooms and kitchen, dark hardwood floors, gorgeous front living room with fireplace and built-in cabinetry, spacious bedrooms, partially finished lower level and a stunning back garden complete with inground pool, interlocking hardscape and private pergola sitting area. Walk to schools, parks, the harbour and trendy Bronte shopping area.

ADDITIONAL FEATURES

EXTERIOR FEATURES

FRONT GARDEN

- Double Car Garage
- Double Car Circular Driveway
- Interlock Stone Walkway
- Beautiful Front Covered Porch

SIDE GARDEN

- Fully Fenced for In-Law Suite
- Ramp Access to In-Law Suite Door
- Interlock Brick Patio

BACK GARDEN

- Inground Pool with Interlock Brick Surround
- New Raypak Pool Heater
- Great Sun Exposure
- Fully Fenced
- Gas BBQ Hookup
- Landscaped with Stone Walkway
- Private Corner Deck with Pergola
- Shed

ROOM DETAILS

MAIN LEVEL

FOYER

- Neutral Ceramic Tile Flooring
- Built-In Bench & Shelving Nook
- Upgraded Lighting

LIVING ROOM

- Dark Hardwood Flooring
- Built-In Electric Fireplace with Built-In Cabinetry
- Pot Lighting
- Window Coverings

DINING ROOM

- Dark Hardwood Flooring
- Upgraded Light Fixtures
- Window Coverings

KITCHEN

- Upgraded Ceramic Tile Flooring
- Neutral Cabinetry
- Upgraded Countertop
- Undermount Black Sink
- Upgraded Faucet
- Black Amana Fridge
- Black Frigidaire Stove
- Built-In Black Bosch Dishwasher
- Built-In Black Microwave
- Upgraded Tile Backsplash
- Under Cabinet Lighting
- Pot Lighting
- Crown Molding
- Pantry Closet
- Walkout Hallway to Back Garden

BATHROOM

- 2 Piece
- Upgraded Ceramic Tile Flooring
- Pedestal Sink
- Upgraded Lighting
- Crown Molding

MAIN FLOOR IN-LAW SUITE

ENTRY

- Private Side Entrance
- Ceramic Tile Flooring
- Double Closet

FAMILY ROOM

- Currently Part of In-Law Suite but Can Easily Be Converted Back
- Dark Hardwood Flooring
- Window Blinds
- Electric Fireplace
- Crown Molding

KITCHEN

- Dark Hardwood Flooring
- White Hotpoint Stove
- White Kenmore Fridge
- Neutral Cabinetry & Countertop
- Pot Lighting
- Crown Molding
- Tiled Backsplash
- Eat In Area

BATHROOM

- 3 Piece
- Ceramic Tile Flooring
- Upgraded Cabinetry & Countertop
- Wall Sconces
- Walk-In Tiled Shower Enclosure

BEDROOM

- Hardwood Flooring
- 2 Double Clothes Closets
- Crown Molding
- Window Blinds
- Upgraded Electric Light Fixtures
- Walkout to Back Garden



ROOM DETAILS

UPPER LEVEL

UPPER FOYER

- Hardwood Flooring
- Crown Molding
- Upgraded Electric Light Fixtures
- Double Linen Closet

MASTER BEDROOM

- Neutral Broadloom
- Double Clothes Closet
- Window Blinds
- Upgraded Light Fixtures
- Ensuite

ENSUITE

- 3 Piece
- Neutral Ceramic Tile Flooring
- Upgraded Lighting
- Upgraded Cabinetry & Countertop with Undermount Sink
- Walk-In Tile Shower Enclosure

BEDROOM

- Dark Hardwood Flooring
- Window Blinds
- Double Clothes Closet
- Crown Molding

BEDROOM

- Dark Hardwood Flooring
- Window Blinds
- Double Clothes Closet
- Crown Molding

BEDROOM (Currently Office)

- Dark Hardwood Flooring
- Window Blinds
- Clothes Closet
- Crown Molding
- Built-In Home Desk & Shelving

BATHROOM

- 4 Piece
- Neutral Ceramic Tile Flooring
- Upgraded Lighting & Pot Lights
- Upgraded Cabinetry & Countertop with Undermount Sink
- Tiled Shower/Tub Enclosure

LOWER LEVEL

FOYER

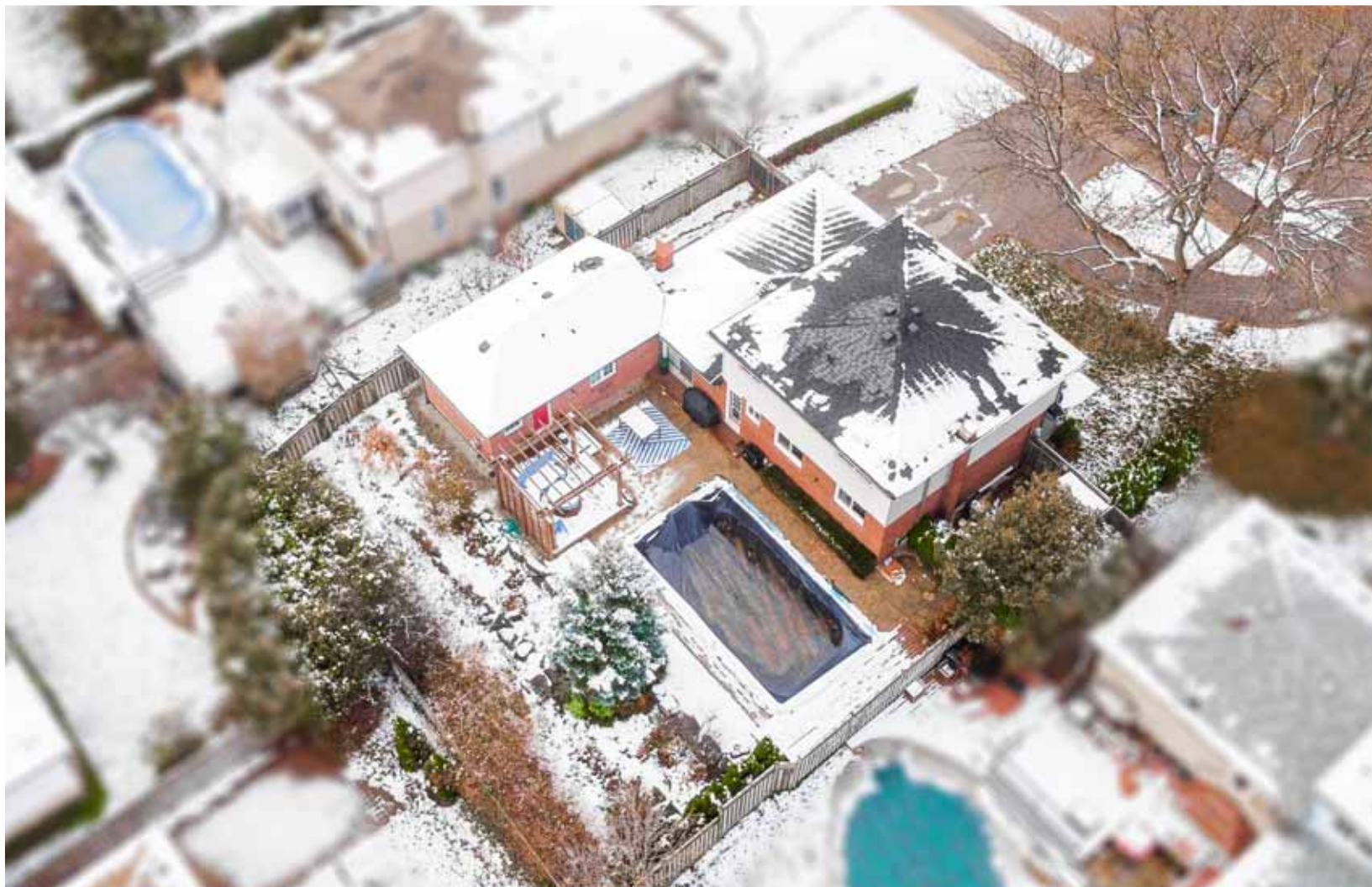
- Neutral Broadloom
- Inside Entry from Garage

RECREATION ROOM

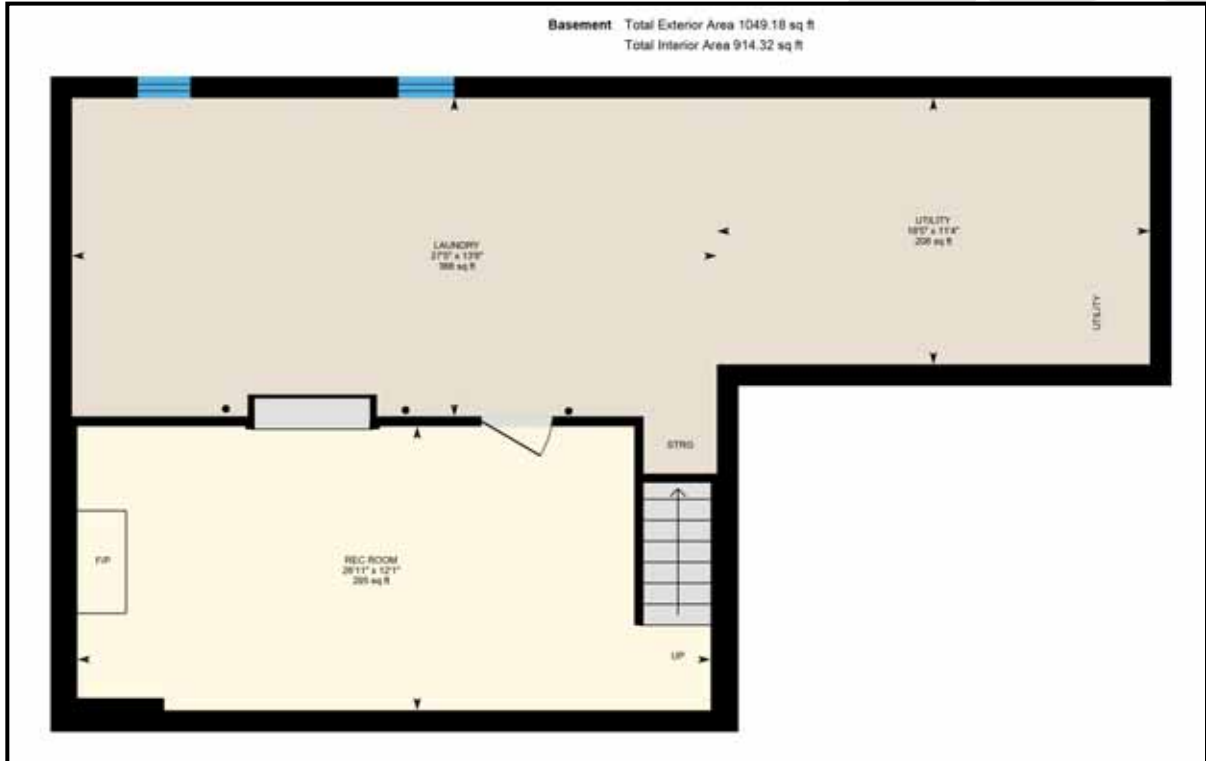
- Neutral Broadloom
- Pot Lighting
- Electric Fireplace
- Built-In Nook & Shelving

LAUNDRY & STORAGE

- White GE Dryer
- White Whirlpool Washer
- Laundry Tub
- Shelving

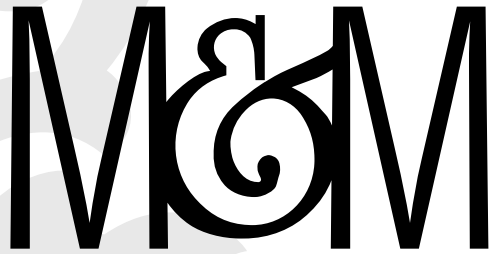






FLOOR PLANS

* Floor plans may not be exactly as shown



MACKEY &
McCORMICK

BLAIRANDPETER.CA

TOP 1% NATIONALLY



BLAIR MACKEY & PETER McCORMICK

BROKER

SALES REPRESENTATIVE



ROYAL LePAGE
CHAIRMAN'S CLUB
NATIONAL TOP 1%
LIFETIME MEMBER
2020



905.845.4267

326 LAKESHORE ROAD EAST

OAKVILLE ONTARIO L6J 1J6

BLAIR@BLAIRANDPETER.CA

PETER@BLAIRANDPETER.CA

WWW.BLAIRANDPETER.CA