



62

WORTHINGTON DRIVE

BRONTE



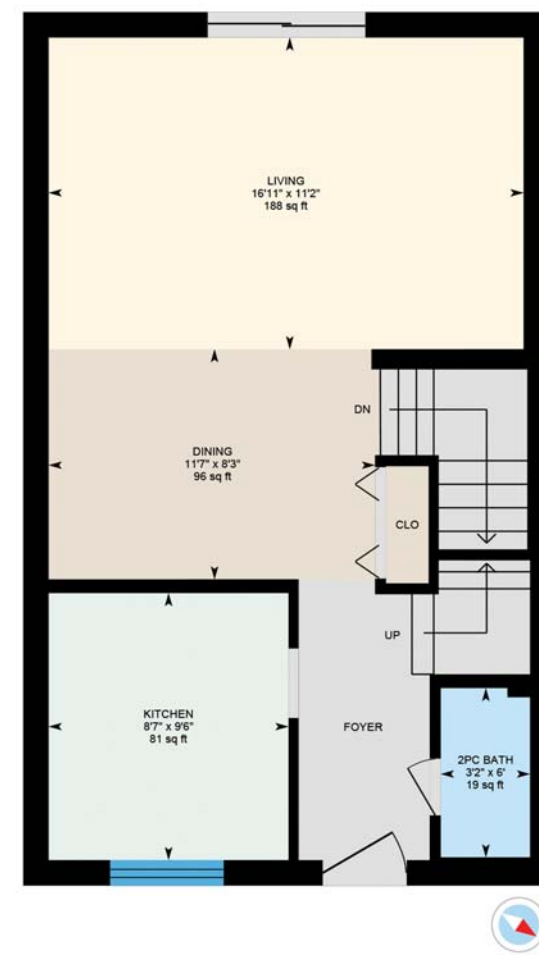
MACKEY &
McCORMICK
BLAIRANDPETER.CA



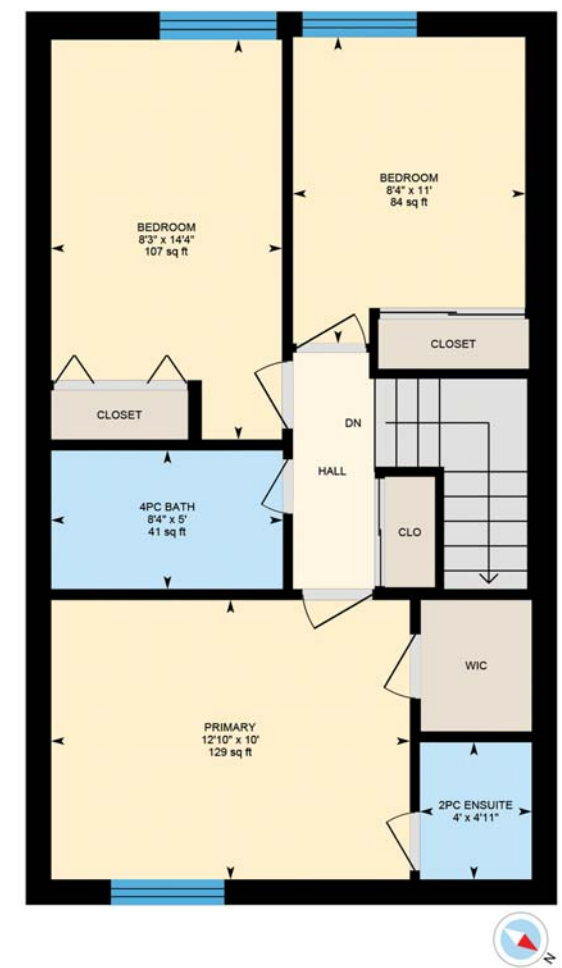








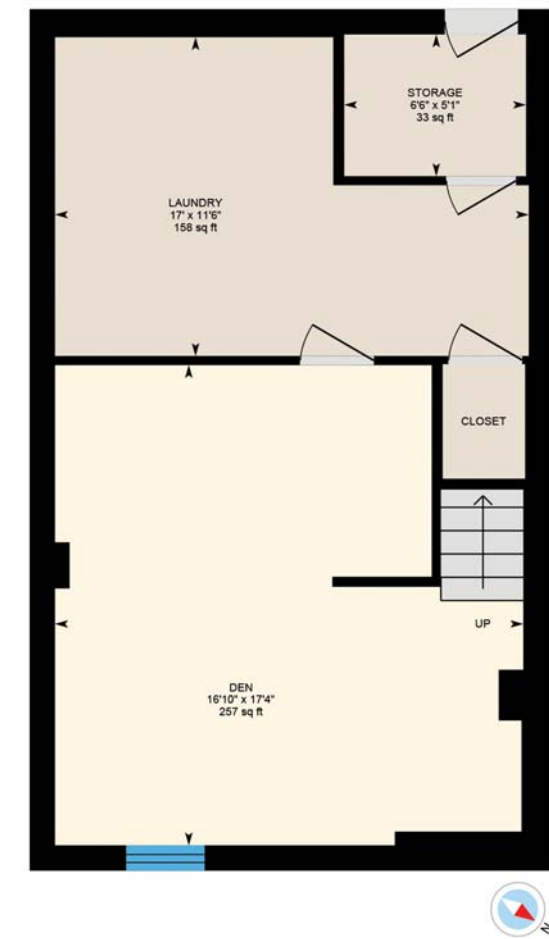
Main Floor
Exterior Area 588.31 sq ft



2nd Floor
Exterior Area 606.08 sq ft



FLOOR PLANS



Basement (Below Grade)
Exterior Area 576.04 sq ft

* Floor plans may not be exactly as shown



ROOM DETAILS

MAIN LEVEL

Foyer

- Ceramic Flooring

Living Room

- Parquet Flooring
- Crown Molding
- Walkout to Backyard with Private Patio

Dining Room

- Parquet Flooring
- Crown Molding

Kitchen

- Ceramic Tile Flooring
- Neutral Cabinetry & Countertop
- Fridge (As Is Condition)
- Stove (As Is Condition)
- Built-In Dishwasher (As Is Condition)
- Built-In Microwave (As Is Condition)
- Pass Through to Dining Area
- Window Blinds

Powder Room

- 2-Piece
- Pedestal Sink

UPPER LEVEL

Upper Foyer

- Parquet Flooring
- Double Linen Closet

Master Bedroom

- Parquet Flooring
- Walk-In Closet
- Ceiling Fan
- Window Blinds
- Ensuite

Ensuite

- 2 Piece

Bedroom

- Parquet Flooring
- Double Closet
- Window Blinds

Bedroom

- Parquet Flooring
- Double Closet
- Window Blinds

Bathroom

- 4 Piece
- White Cabinetry

LOWER LEVEL

Recreation Room

- Broadloom

Laundry

- Front Load Washer (As Is Condition)
- Dryer (As Is Condition)
- Storage Room



WELCOME HOME

TAXES: \$2,535 / 2020
POSSESSION: Flexible

Great opportunity for home ownership in desirable and trendy Bronte, steps to the lake, trails, shopping and restaurants. 2 storey, 3 bedroom unit with a great spacious main floor layout, spacious master with walk-in closet and a 2-piece ensuite, parquet flooring, bright kitchen with pass through to dining area, main floor powder room and a finished lower level. Convenient inside access to underground parking, cute private garden area backing onto green space.

ADDITIONAL FEATURES

Exterior Features

Front Garden

- 1 Underground Parking Space with Inside Access

Back Garden

- Private Garden Area with Patio Backing onto Greenspace

Other Features

- Steps to Lake, Trails, Shopping & Restaurants

M&M

ALL information contained herein has been supplied by the Seller to the best of their knowledge and while deemed accurate is NOT guaranteed by Royal LePage Real Estate Services Ltd., Brokerage. ALL measurements are approximate.



THE VILLAGE OF BRONTE

Established in 1834, Bronte Village (southwest Oakville) is one of the oldest Ontario communities, and arguably, one of its most scenically beautiful, having two open and publically accessible harbours – Inner and Outer. Bronte was a commercial shipping centre for grain and timber but evolved to a commercial fishing port by the 19th century.

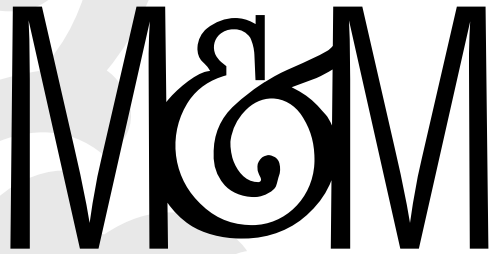
Bronte Harbour is a main access point to the Waterfront Trail system.

Stroll Bronte's spectacular Heritage Waterfront Park – harbour, boardwalk and pier, lighthouse, beach, parklands, cycling and walking trails, picnic and children's play areas. Visit the friendly merchants or just relax and watch the boats and swans glide by. For 'on the water' excitement, charter a sport-fishing outing to catch trophy salmon.

See the historic Sovereign House on Bronte Bluffs and the Fishermen's Memorial at the Pier.

Bronte's marine heritage, with its "small-town" specialty shops and "big-city" health and professional services, dining options, shopping, exciting events and location midway between Toronto and Niagara, makes Bronte a great place to visit.

Shop, dine, walk, bike, picnic or just sit on the grass to take in one of Bronte's special events such as Oakville's Canada Day – July 1st with fireworks, or Art in the Park in August.



MACKEY &
McCORMICK

BLAIRANDPETER.CA

TOP 1% NATIONALLY



BLAIR MACKEY & PETER McCORMICK

BROKER

SALES REPRESENTATIVE



ROYAL LePAGE
CHAIRMAN'S CLUB
NATIONAL TOP 1%
LIFETIME MEMBER
2020



905.845.4267

326 LAKESHORE ROAD EAST

OAKVILLE ONTARIO L6J 1J6

BLAIR@BLAIRANDPETER.CA

PETER@BLAIRANDPETER.CA

WWW.BLAIRANDPETER.CA