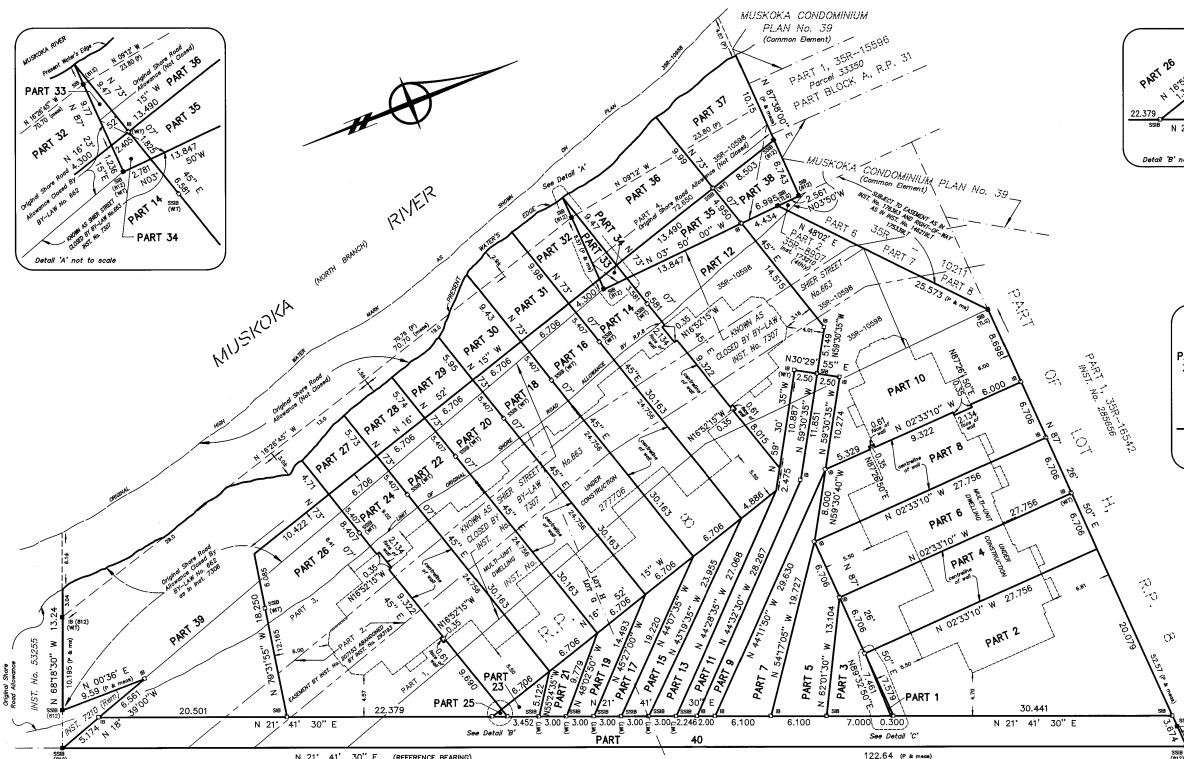
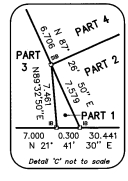
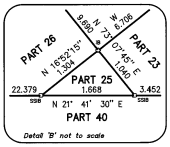
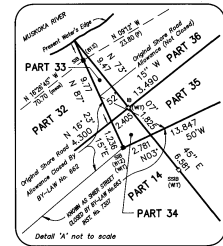


16814



DISTRICT ROAD No. 16 (by BY-LAW 91-50)  
(Registered as Inst. No. 255203)

SCHEDULE				
PART	LOT	CON	PLAN	INST. NO.
1,2,3,4,5,6,7,8,9	PART OF LOT H		8	
10	PART OF LOT H (Portion closed by BY-LAW No. 663, Inst. 7307)		8	
	PART OSRA IN FRONT OF LOT 1	1		
11	PART OF LOT H		8	
12	PART OF LOT H (Portion closed by BY-LAW No. 663, Inst. 7307)		8	
	PART OSRA IN FRONT OF LOT 1	1		
13	PART OF LOT H		8	
14	PART OF LOT H (Portion closed by BY-LAW No. 663, Inst. 7307)		8	
	PART OSRA IN FRONT OF LOT 1 (Portion closed by BY-LAW No. 662, Inst. 7306)	1		
15	PART OF LOTS G & H		8	
16	PART OF LOT H (Portion closed by BY-LAW No. 663, Inst. 7307)		8	
	PART OSRA IN FRONT OF LOT 1 (Portion closed by BY-LAW No. 662, Inst. 7306)	1		
17	PART OF LOTS G & H		8	
18	PART OF LOTS G & H (Portion closed by BY-LAW No. 663, Inst. 7307)		8	27706
	PART OSRA IN FRONT OF LOT 1 (Portion closed by BY-LAW No. 662, Inst. 7306)	1		
19	PART OF LOTS G & H		8	
20	PART OF LOTS G & H (Portion closed by BY-LAW No. 663, Inst. 7307)		8	
	PART OSRA IN FRONT OF LOT 1 (Portion closed by BY-LAW No. 662, Inst. 7306)	1		
21	PART OF LOT G		8	
22	PART OF LOT G (Portion closed by BY-LAW No. 663, Inst. 7307)		8	
	PART OSRA IN FRONT OF LOT 1 (Portion closed by BY-LAW No. 662, Inst. 7306)	1		
23	PART OF LOT G		8	
24	PART OF LOT G (Portion closed by BY-LAW No. 663, Inst. 7307)		8	
	PART OSRA IN FRONT OF LOT 1 (Portion closed by BY-LAW No. 662, Inst. 7306)	1		
25	PART OF LOT G		8	
26	PART OF LOT G (Portion closed by BY-LAW No. 663, Inst. 7307)		8	
	PART OSRA IN FRONT OF LOT 1 (Portion closed by BY-LAW No. 662, Inst. 7306)	1		
27,28,29,30,31,32	PART OSRA IN FRONT OF LOT 1 (Portion closed by BY-LAW No. 662, Inst. 7306)	1		
33,34,35	PART OSRA IN FRONT OF LOT 1 (Portion closed)	1		
36	PART OF LOT G (Portion closed by BY-LAW No. 663, Inst. 7307)		8	
37	PART OF LOT H (Portion closed by BY-LAW No. 663, Inst. 7307)		8	
38	PART OF LOT H (Portion closed by BY-LAW No. 663, Inst. 7307)		8	27706
39	PART OF LOT H (Portion closed by BY-LAW No. 663, Inst. 7307)		8	
40	PART OF LOT H (Portion closed by BY-LAW No. 663, Inst. 7307)		8	

I REQUIRE THIS PLAN TO BE DEPOSITED UNDER THE REGISTRY ACT  
DATE: February 4, 1997

PLAN 35R-16814  
RECEIVED AND DEPOSITED  
DATE: FEB. 4, 1997

ALUIS KARKLINS, O.L.S.  
LAND REGISTRAR FOR THE REGISTRY DIVISION OF MUSKOKA (NO. 33)

PLAN OF SURVEY OF  
PART OF LOTS G & H  
REGISTERED PLAN No. 8  
TOWN OF BRACEBRIDGE AND  
PART OF THE ORIGINAL SHORE  
ROAD ALLOWANCE IN FRONT OF  
LOT 1, CONCESSION 1  
TOWNSHIP OF MACAULAY NOW IN THE  
TOWN OF BRACEBRIDGE  
DISTRICT MUNICIPALITY OF MUSKOKA

SCALE 1:250

0 5 10 15m

A. KARKLINS SURVEYING LTD. 1997  
ONTARIO AND CANADA LAND SURVEYORS

METRIC  
DIMENSIONS SHOWN ON THIS PLAN ARE IN METRES AND CAN BE CONVERTED TO FEET BY DIVIDING BY 0.3048

LEGEND

- DENOTES SURVEY MONUMENT FOUND
- DENOTES SURVEY MONUMENT PLANTED
- SSB DENOTES SHORT STANDARD IRON BAR
- SB DENOTES IRON BAR
- SB DENOTES STANDARD IRON BAR
- MB DENOTES MEASURED
- P DENOTES PLAN 35R-10588
- B2 DENOTES B.P. KNOWN O.L.S.
- TLC DENOTES T.L. GLASSFORD, O.L.S.

NOTE

BEARINGS ARE ASTROMONIC AND ARE DERIVED FROM PLAN 35R-10588  
GIVING DISTRICT ROAD No. 16, AS MEASURED, A BEARING OF N 31°41'30" E.

ALL CORNERS COULD NOT BE MONUMENTED BECAUSE OF ON-GOING CONSTRUCTION. APPROPRIATE WITNESS MONUMENTS HAVE BEEN SET.

ALL TIES TO BUILDINGS ARE NON-ADJACENT TO THE PART LOTS AS SHOWN AND ARE MEASURED FROM THE CONCRETE FOUNDATION WALLS.

SURVEYOR'S CERTIFICATE

I CERTIFY THAT:

- THIS SURVEY AND PLAN ARE CORRECT AND IN ACCORDANCE WITH THE SURVEY ACT, THE SURVEYOR'S ACT AND THE REGISTRY ACT AND THE REGULATIONS MADE UNDER THEM.
- THE SURVEY WAS COMPLETED ON THE 21st DAY OF JANUARY, 1997.

DATE: February 4, 1997

ALUIS KARKLINS  
ONTARIO LAND SURVEYOR

A. KARKLINS SURVEYING LTD.  
ONTARIO AND CANADA LAND SURVEYORS  
LAND INFORMATION CONSULTANTS  
R.R. #1, BUTTON WEST, ONTARIO L0C 1H0, Tel. (416) 478-4085

FIELD: A.K. DRAWN: M.C. CHECKED: A.K. JOB NO.: 96-793-22-01