

PLAN 35R-21222

RECEIVED AND DEPOSITED
DATE: 12 MAY 2006

LEIGHT LAND REGISTRAR FOR THE
LAND TITLES DIVISION OF MUSKOKA

PART	LOT	PLAN	PIN	AREA
1	Part of 1			136.4 m ²
2	Part of 2			60.4 m ²
3	Part of 3			66.6 m ²
4	Part of 4			60.2 m ²
5	Part of 5			60.2 m ²
6	Part of 6	35M-705	Part of 4811-0334	257.7 m ²
7	Part of 7			178.0 m ²
8	Part of 8			178.0 m ²
9	Part of 9			303.9 m ²
10	Part of 10			7.5 m ²
11	Street			

PLAN OF SURVEY OF
PART OF LOTS 1, 2, 3, 4, 5, 6, 7, 8, 9 &
PART OF STONEHENGE COURT
REGISTERED PLAN 35M-705
TOWN OF BRACEBRIDGE
DISTRICT MUNICIPALITY OF MUSKOKA
COOTE, HILEY, JEMMETT LIMITED
SCALE 1 : 500



DISTANCES SHOWN ON THIS PLAN ARE IN METRES AND
CAN BE CONVERTED TO FEET BY DIVIDING BY 0.3048.

LEGEND

- BEARINGS ARE ASTROMERIC AND ARE REFERRED TO THE SOUTHERLY LIMIT OF LOT 1 AS SHOWN ON REGISTERED PLAN 35M-705 HAVING A BEARING OF N68°56'20"E.
- MONUMENT FOUND
- SB STANDARD IRON BAR
- SIB SHORT STANDARD IRON BAR
- WIP WOODEN IRON PIPES
- WIP WIP LINDSON O.L.S.
- CAJ COOTE, HILEY, JEMMETT LIMITED
- FAB FITZMAURICE & BOYER O.L.S.

SURVEYOR'S CERTIFICATE

I CERTIFY THAT:
1 - THIS SURVEY AND PLAN ARE CORRECT AND IN ACCORDANCE WITH THE SURVEYS ACT, THE SURVEYORS ACT AND THE LAND TITLES ACT AND THE REGULATIONS MADE UNDER THEM.
2 - THE SURVEY WAS COMPLETED ON THE 20th DAY OF JANUARY, 2006.

MAY 11, 2006
BRACEBRIDGE, ONTARIO

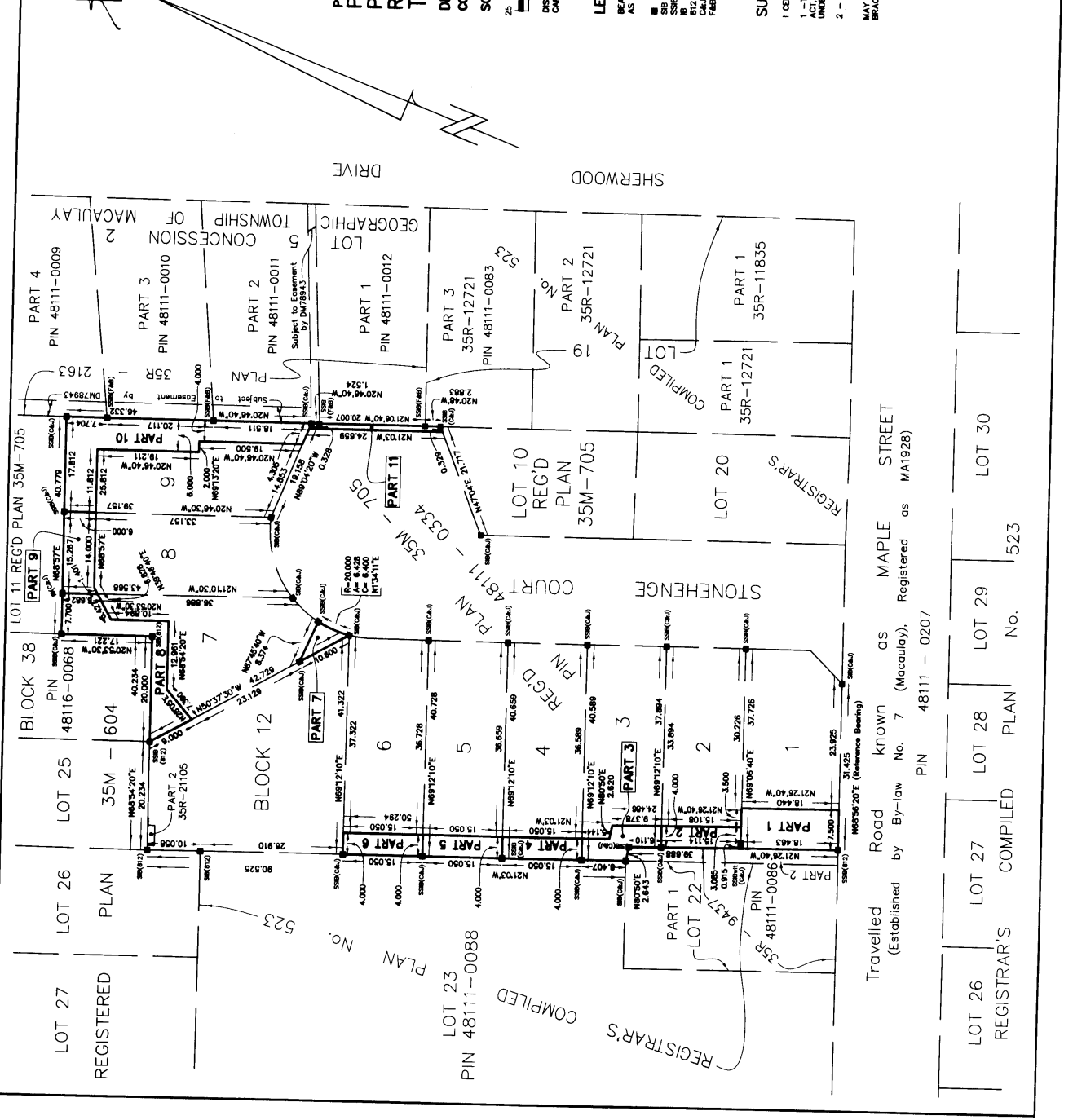
JOHN W. HILEY
ONTARIO LAND SURVEYOR

COOTE, HILEY, JEMMETT LIMITED
ONTARIO LAND SURVEYORS

www.muskokasurveyors.com e-mail: survey@muskokasurveyors.com
6 Dundas St. East Unit 3 Phone: (705) 845-4611
Bracebridge, ON Fax: (705) 844-4443
PIL 2A6 For: (705) 845-1843
Drawn by: A.C. P.L. 2006 Form 338F

I REQUIRE THIS PLAN TO BE DEPOSITED
UNDER THE LAND TITLES ACT.
DATE: MAY 11, 2006

JOHN W. HILEY, O.L.S.



Travelled Road known as MAPLE STREET
(Established by By-law No. 7 (Maccaulay), Registered as MA1928)

LOT 26 REGISTERED PLAN No. 523
LOT 27 REGISTERED PLAN No. 523
LOT 28 REGISTERED PLAN No. 523
LOT 29 REGISTERED PLAN No. 523
LOT 30 REGISTERED PLAN No. 523