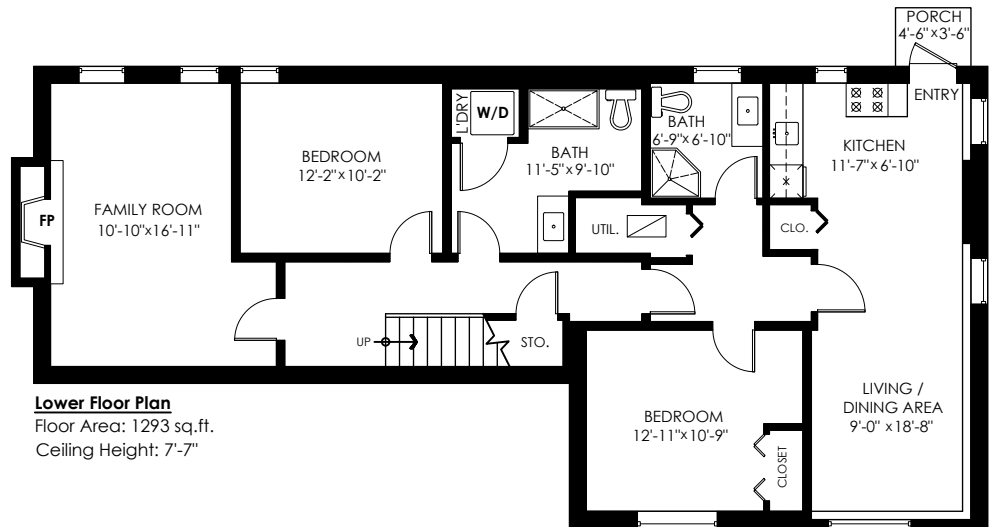
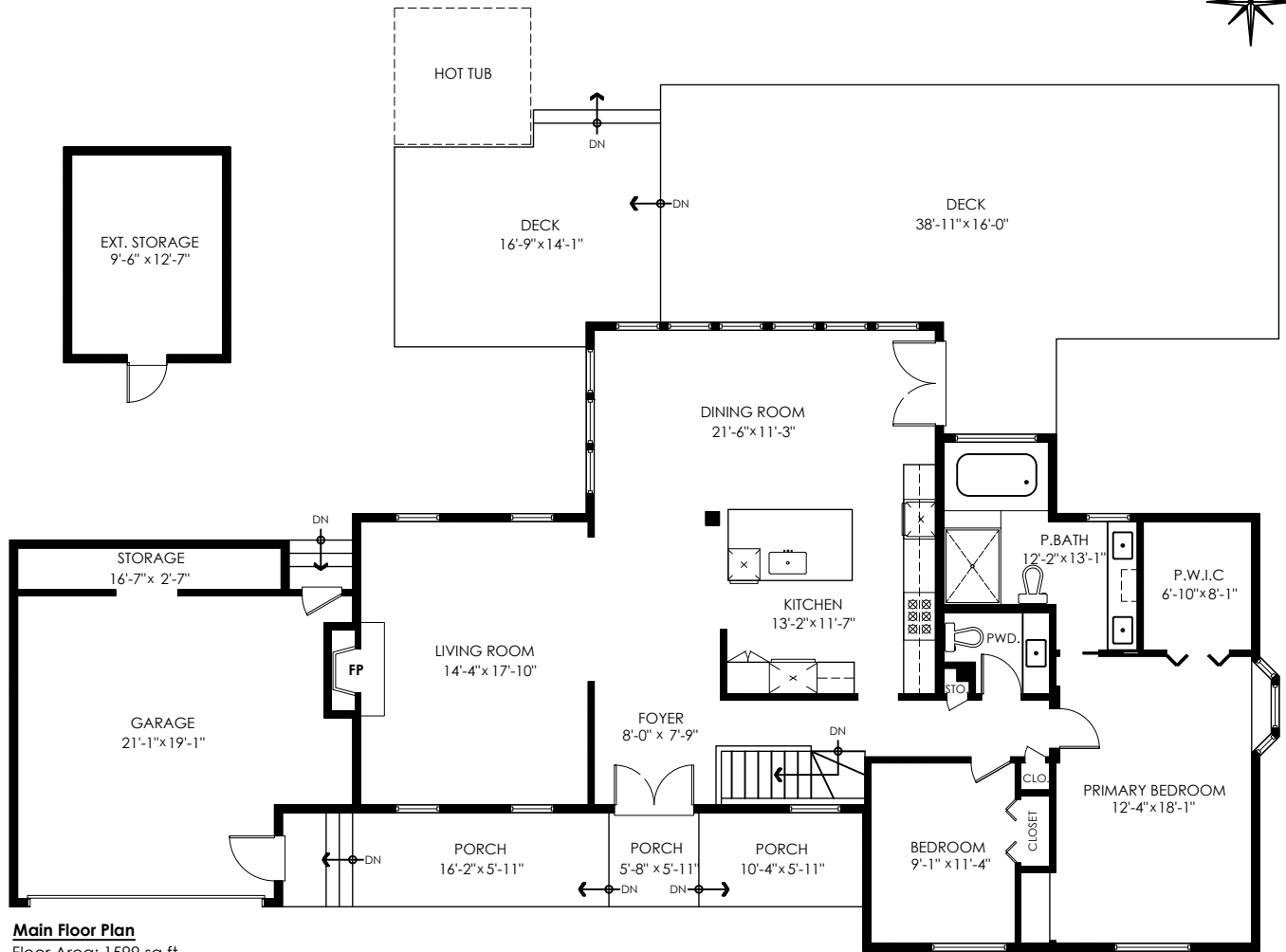
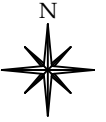
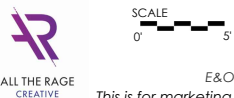


34805 Arden Dr Abbotsford



Main Floor:	1,559 sq.ft.
Lower Floor:	1,293 sq.ft.
Total Livable:	2,852 sq.ft.
Garage:	449 sq.ft.
Grand Total:	3,301 sq.ft.
Ext. Storage:	143 sq.ft.
Decks:	862 sq.ft.
Porches:	206 sq.ft.
Total Extras:	1,211 sq.ft.

Ceiling Height: 8'-0"



info@pixlworks.com www.pixlworks.com 604.329.5788



E&O Insured. Total square foot calculated to gross unit area. SQFT based on interior measurements to exterior walls, not taken from original blueprints, may include unfinished area. This is for marketing purposes only and is not intended for architectural/construction use. All details, sizes & placements should be considered approximate within +/- 2% tolerance.

MEASURED ON: (2023-05-01)