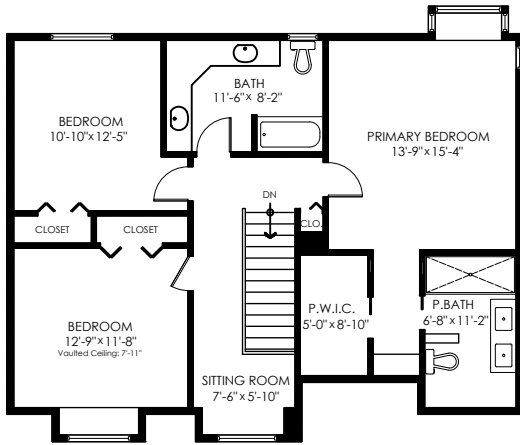
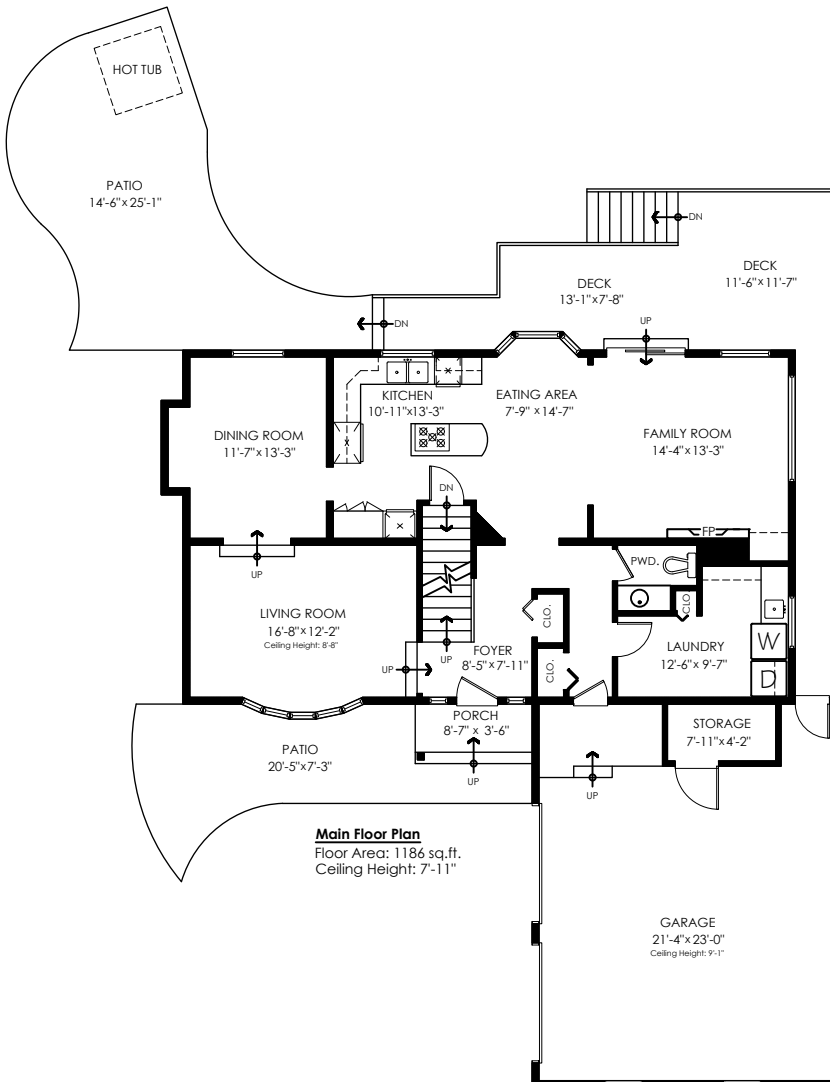


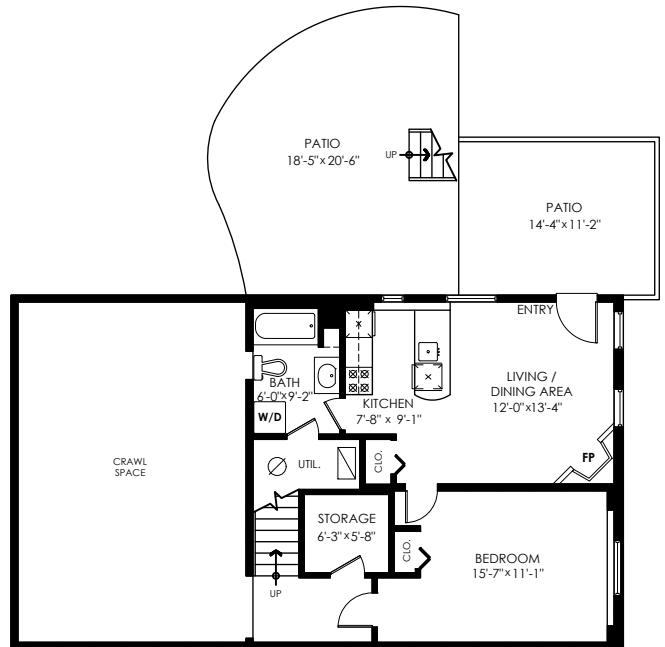
# 34657 Dunsmuir Ct Abbotsford



**Upper Floor Plan**  
 Floor Area: 1049 sq.ft.  
 Ceiling Height: 7'-11"



**Main Floor Plan**  
 Floor Area: 1186 sq.ft.  
 Ceiling Height: 7'-11"



**Lower Floor Plan**  
 Floor Area: 716 sq.ft.  
 Ceiling Height: 7'-9"

Main Floor: 1,186 sq.ft.  
 Upper Floor: 1,049 sq.ft.  
 Lower Floor: 716 sq.ft.  
**Total Livable: 2,951 sq.ft.**

Crawl Space: 446 sq.ft.  
 Garage: 629 sq.ft.  
**Grand Total: 4,026 sq.ft.**

Patios: 1,036 sq.ft.  
 Deck: 332 sq.ft.  
 Porch: 30 sq.ft.  
**Total Extras: 1,398 sq.ft.**

