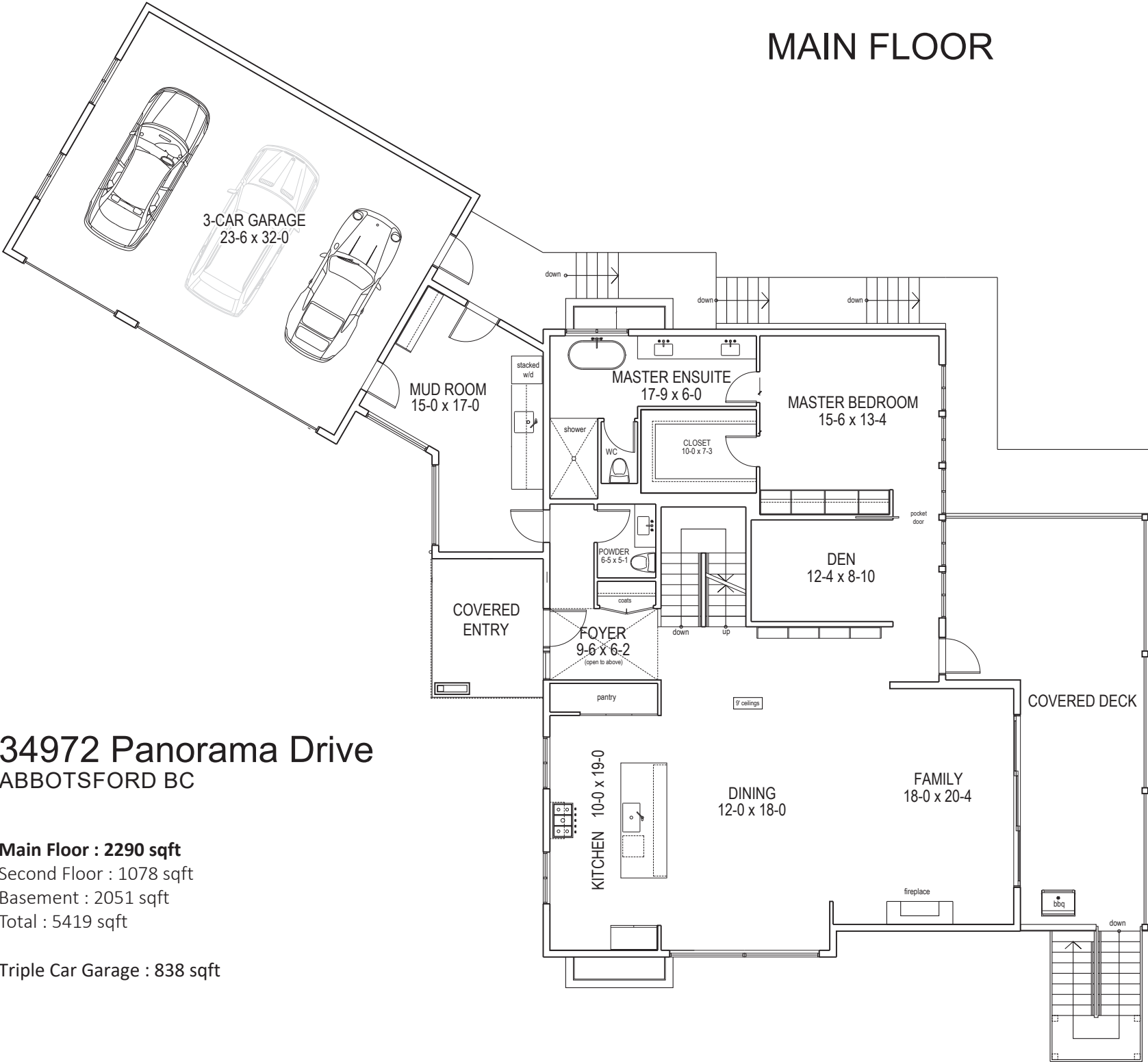


MAIN FLOOR



34972 Panorama Drive
ABBOTSFORD BC

Main Floor : 2290 sqft

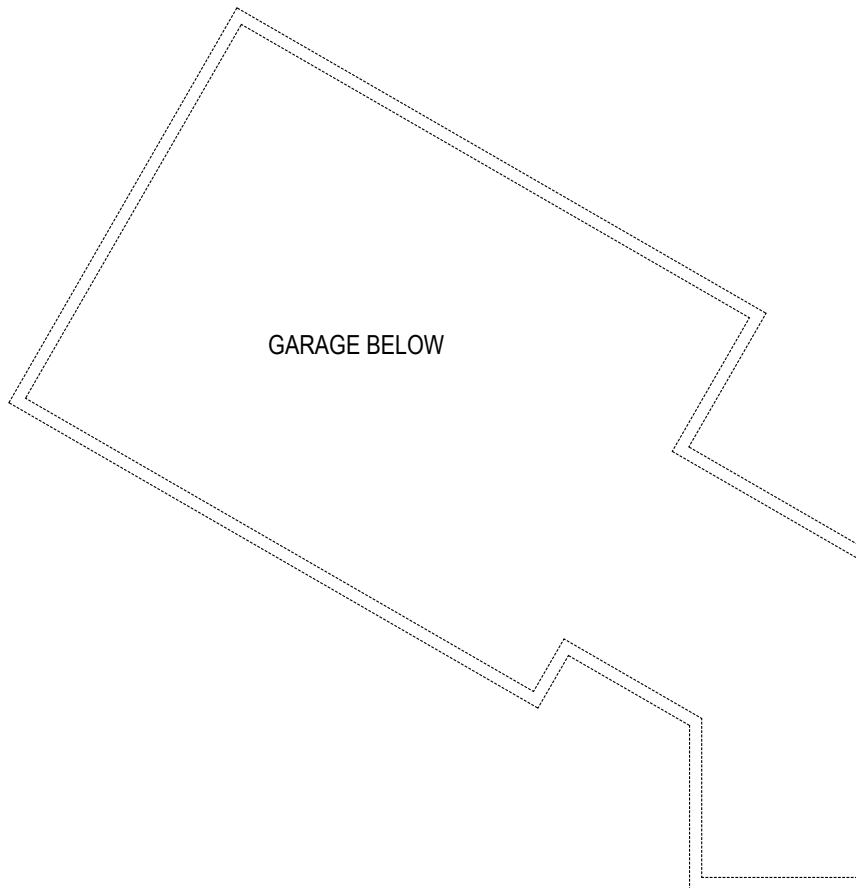
Second Floor : 1078 sqft

Basement : 2051 sqft

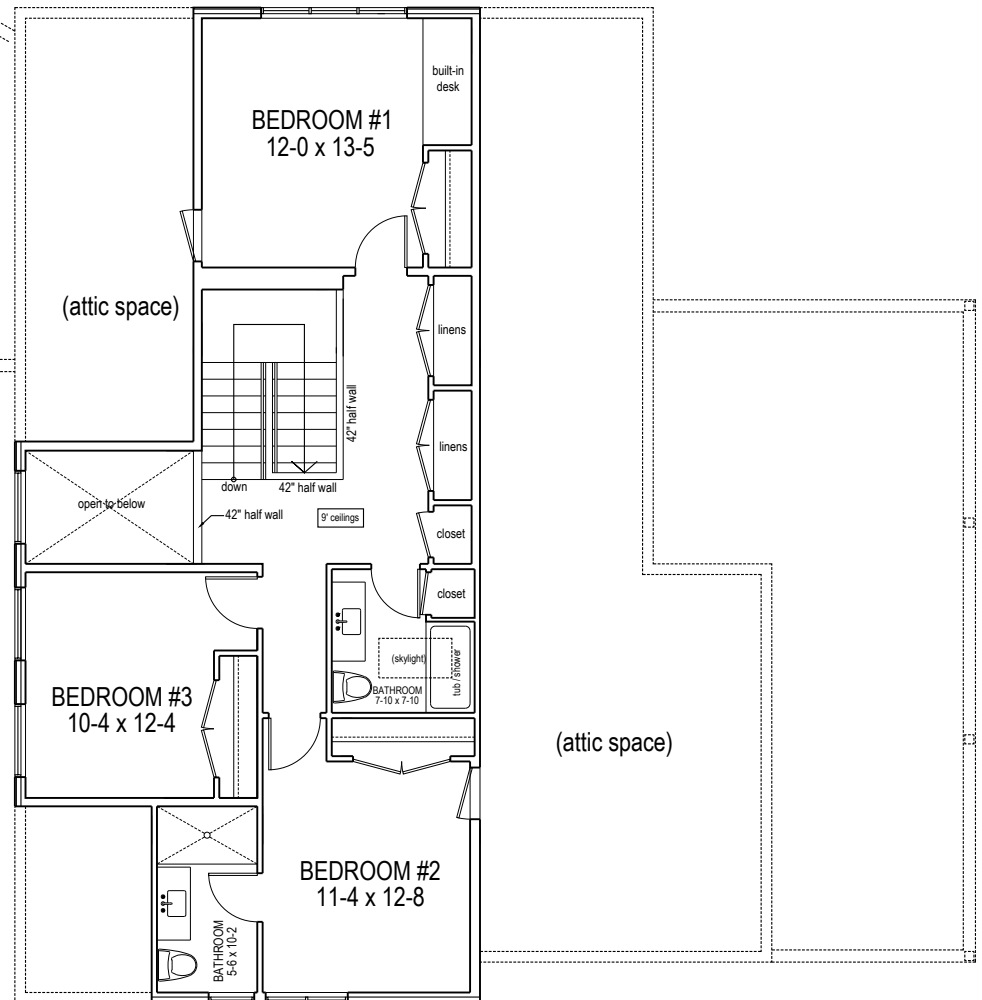
Total : 5419 sqft

Triple Car Garage : 838 sqft

SECOND FLOOR



GARAGE BELOW

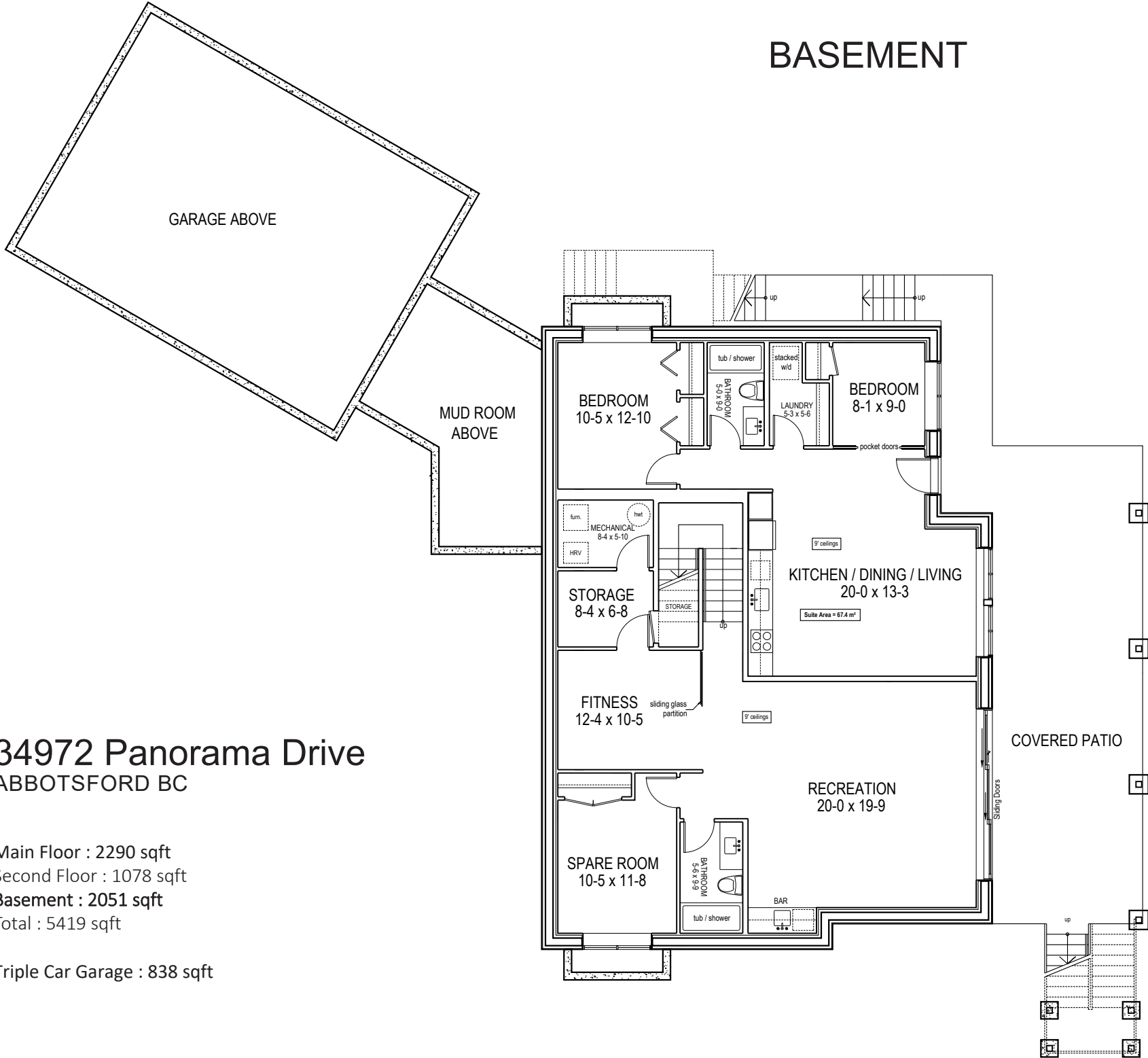


34972 Panorama Drive
ABBOTSFORD BC

Main Floor : 2290 sqft
Second Floor : 1078 sqft
Basement : 2051 sqft
Total : 5419 sqft

Triple Car Garage : 838 sqft

BASEMENT



34972 Panorama Drive
ABBOTSFORD BC

Main Floor : 2290 sqft
Second Floor : 1078 sqft
Basement : 2051 sqft
Total : 5419 sqft

Triple Car Garage : 838 sqft