

**2470 Jonquil Ct
Abbotsford**

| | |
|-----------------------|---------------------|
| Main Floor: | 1,766 sq.ft. |
| Upper Floor: | 970 sq.ft. |
| Lower Floor: | 1,754 sq.ft. |
| Total Livable: | 4,490 sq.ft. |

| | |
|---------------------|---------------------|
| Garage: | 485 sq.ft. |
| Grand Total: | 4,975 sq.ft. |

| | |
|----------------------|-------------------|
| Patio: | 177 sq.ft. |
| Balcony: | 146 sq.ft. |
| Porch: | 84 sq.ft. |
| Total Extras: | 407 sq.ft. |



Upper Floor Plan

Floor Area: 970 sq.ft.
Ceiling Height: 7'-11"

Bedroom: 10'-9" x 14'-1"

Bedroom: 13'-5" x 11'-2"

Bedroom: 17'-8" x 13'-11"
Vaulted Ceiling: 7'-11"

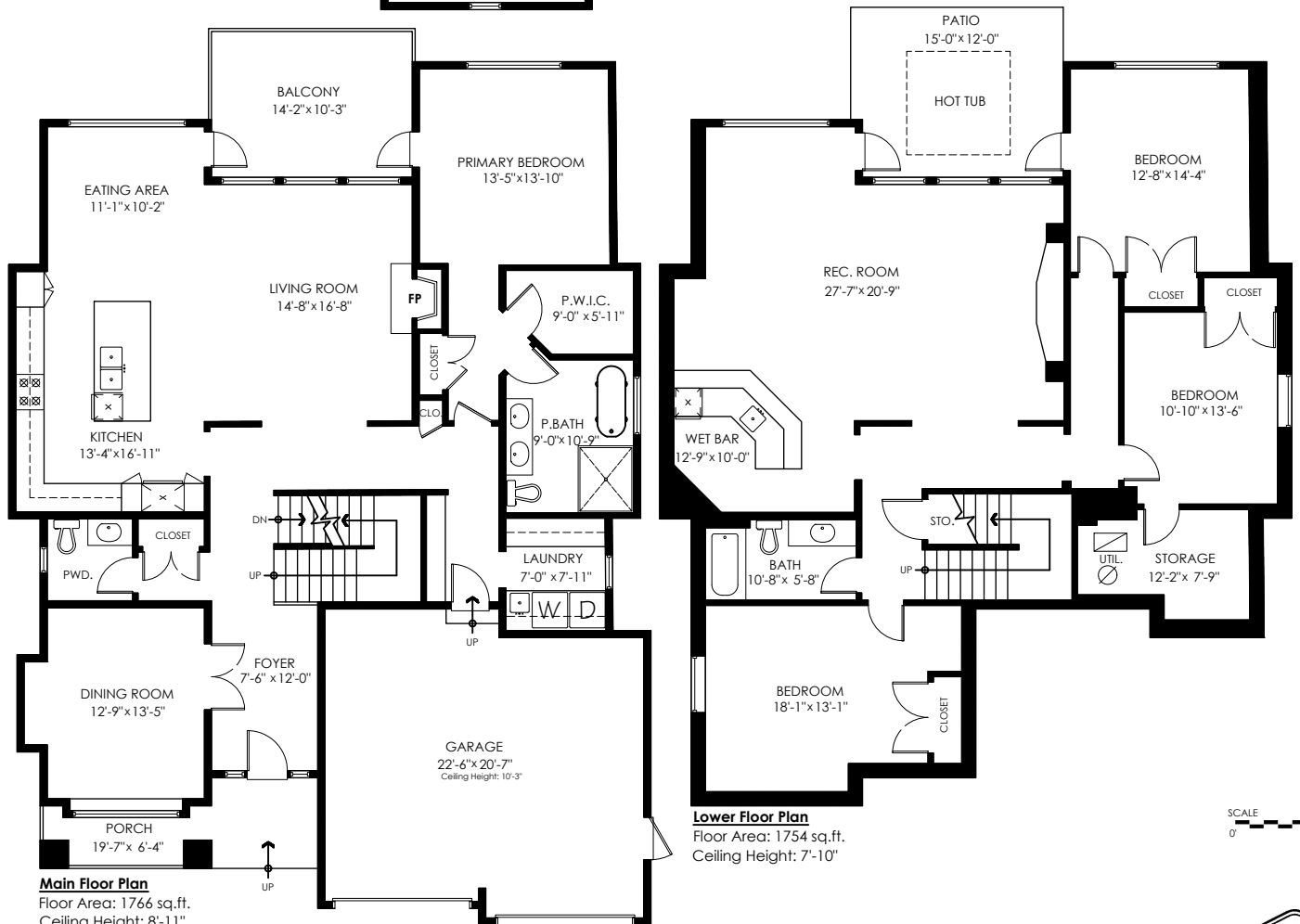
Bath: 5'-11" x 6'-9"

W/C: 8'-1" x 6'-9"

Staircase: DN

Closets: CLOSET, CLOSET, CLOSET, CLOSET

Upper Floor Plan
Floor Area: 970 sq.ft.
Ceiling Height: 7'-11"



Lower Floor Plan
Floor Area: 1754 sq.ft.
Ceiling Height: 7'-10"

SCALE

0' 5'