

**2558 St Moritz Way,
Abbotsford, BC**

ANDREW BRACEWELL

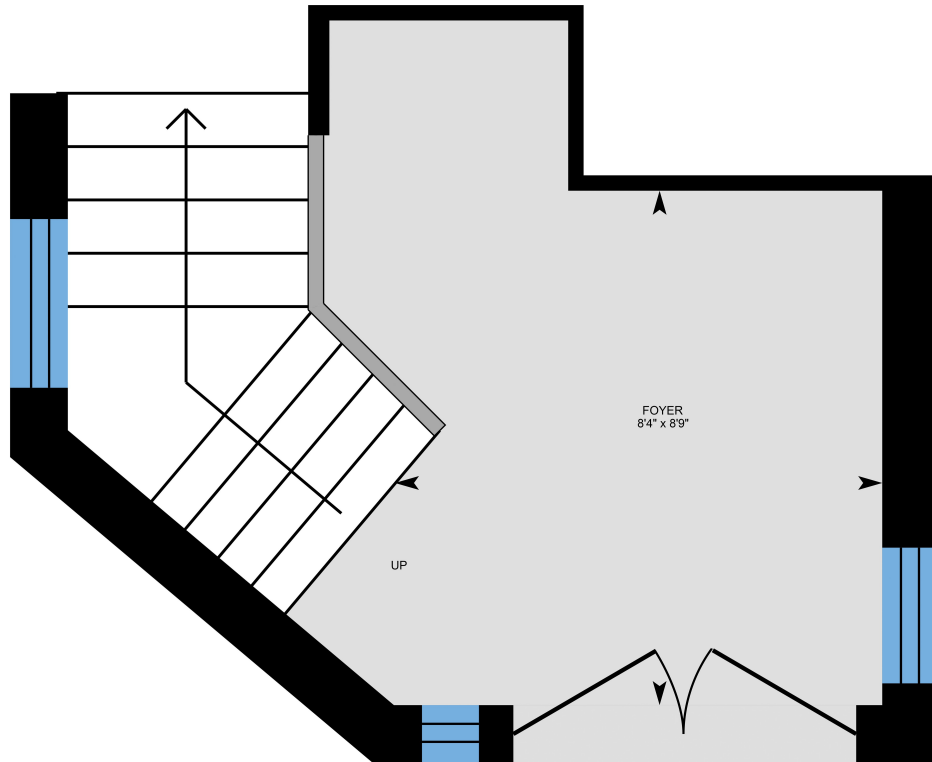
Personal Real Estate Corporation

604-859-2341

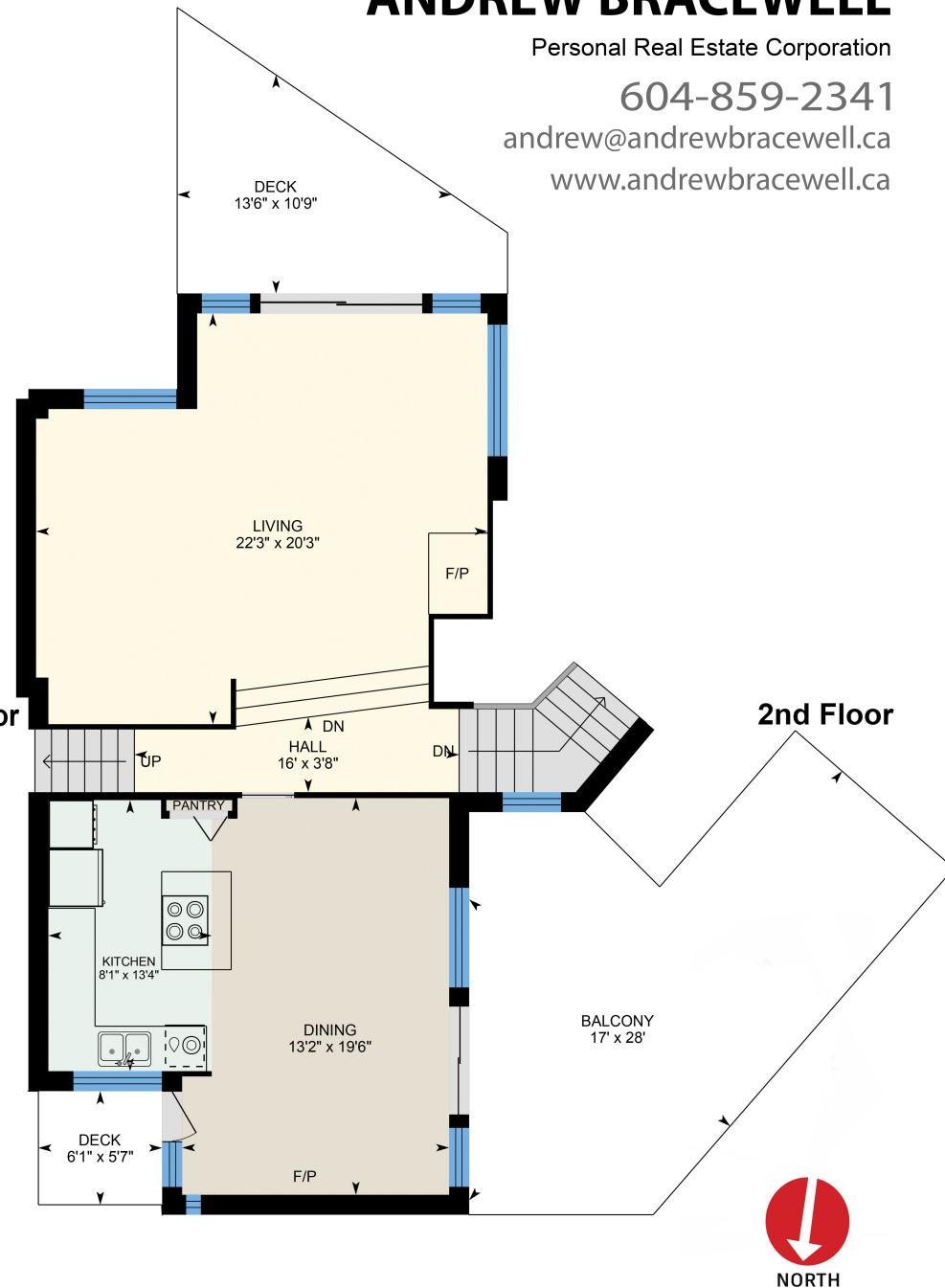
andrew@andrewbracewell.ca

www.andrewbracewell.ca

1st Floor:	114sq.ft.
2ndFloor:	980sq.ft.
3rd Floor:	1194sq.ft.
Total:	2288sq.ft.
Garage:	586sq.ft.



1st Floor



2nd Floor

Measured on: Jun18, 2022

White regions are excluded from total floor area in iGUIDE floor plans.
All room dimensions and floor areas must be considered approximate
and are subject to independent verification.

**2558 St Moritz Way,
Abbotsford, BC**

ANDREW BRACEWELL

Personal Real Estate Corporation

604-859-2341

andrew@andrewbracewell.ca

www.andrewbracewell.ca

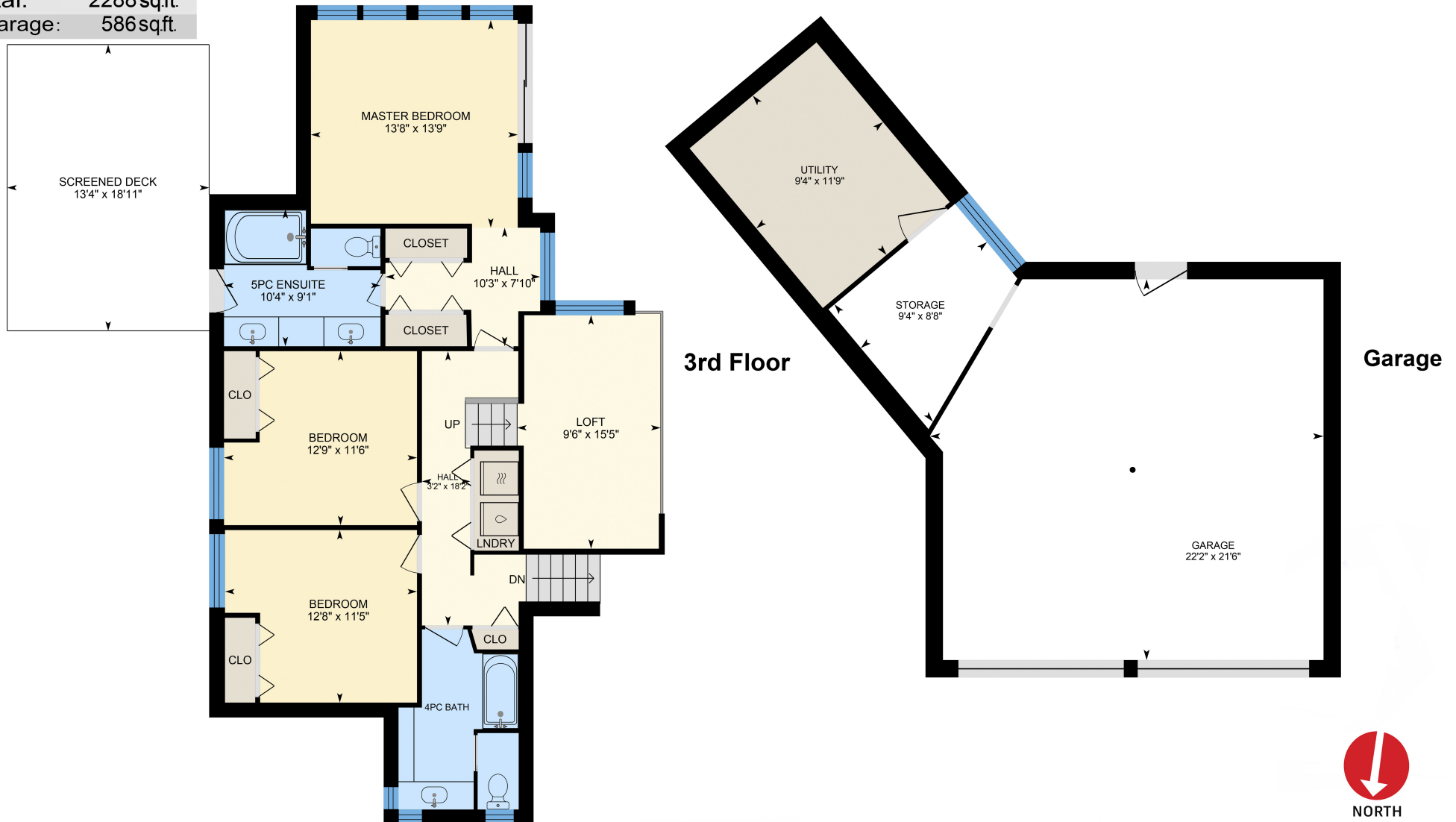
1st Floor: 114sq.ft.

2ndFloor: 980sq.ft.

3rd Floor: 1194sq.ft.

Total: 2288sq.ft.

Garage: 586sq.ft.



Measured on: Jun18, 2022

White regions are excluded from total floor area in iGUIDE floor plans.
All room dimensions and floor areas must be considered approximate
and are subject to independent verification.