

604-859-2341

andrew@andrewbracewell.ca

www.andrewbracewell.ca



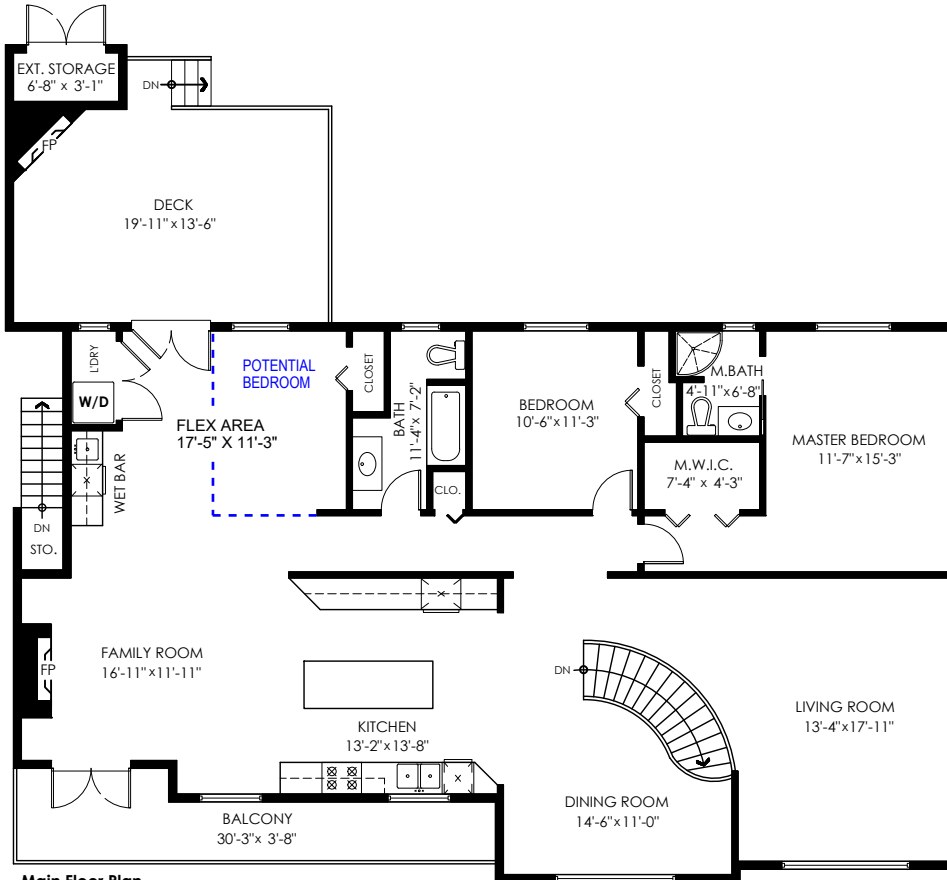
35213 Knox Crescent, Abbotsford

Main Floor: 1,874 sq.ft.
 Lower Floor: 1,579 sq.ft.
Total Livable: 3,453 sq.ft.

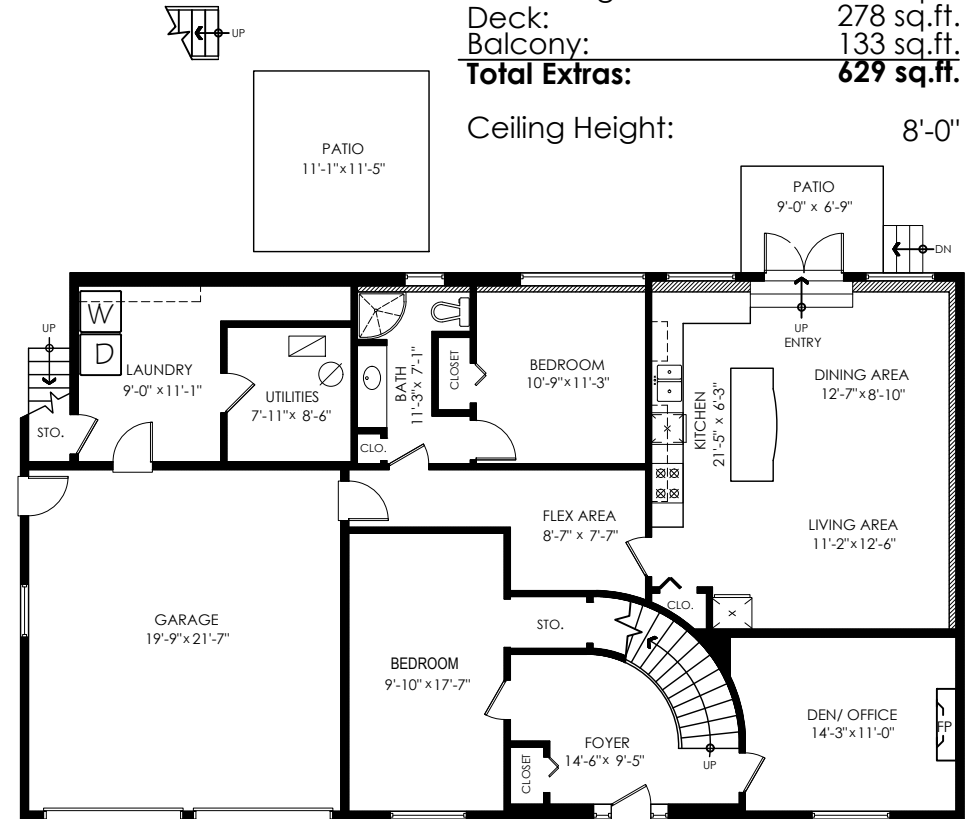
Garage: 458 sq.ft.
Grand Total: 3,911 sq.ft.

Patios: 187 sq.ft.
 Ext. Storage: 31 sq.ft.
 Deck: 278 sq.ft.
 Balcony: 133 sq.ft.
Total Extras: 629 sq.ft.

Ceiling Height: 8'-0"



Main Floor Plan
 Floor Area: 1874sq.ft.



Lower Floor Plan
 Floor Area: 1579 sq.ft.



E&O Insured. Total square foot calculated to gross unit area. \$QFT based on interior measurements to exterior walls, not taken from original blueprints, may include unfinished area.

This is for marketing purposes only and is not intended for architectural/construction use. All details, sizes & placements should be considered approximate within +/- 2% tolerance. www.PixlWorks.com

MEASURED ON: (2021-08-24)

Measuring, Scanning, & Design | 604-329-5788

