

604-859-2341

andrew@andrewbracewell.ca

www.andrewbracewell.ca

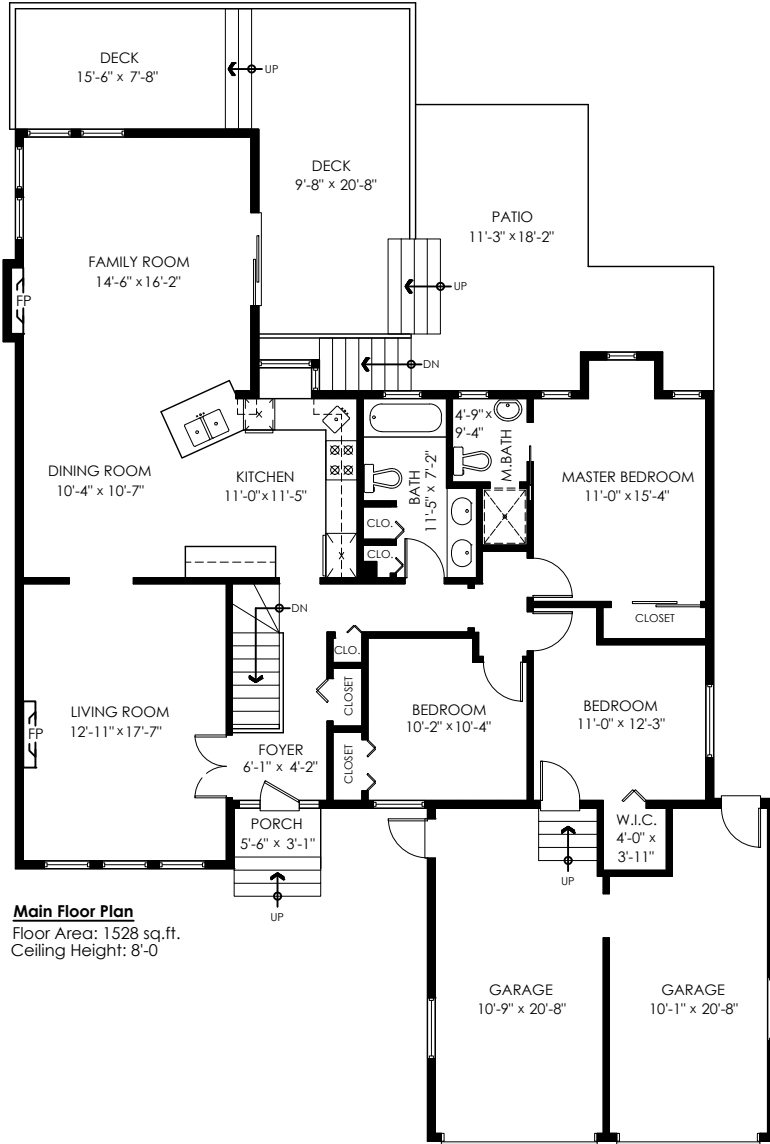


33264 Terry Fox Ave, Abbotsford

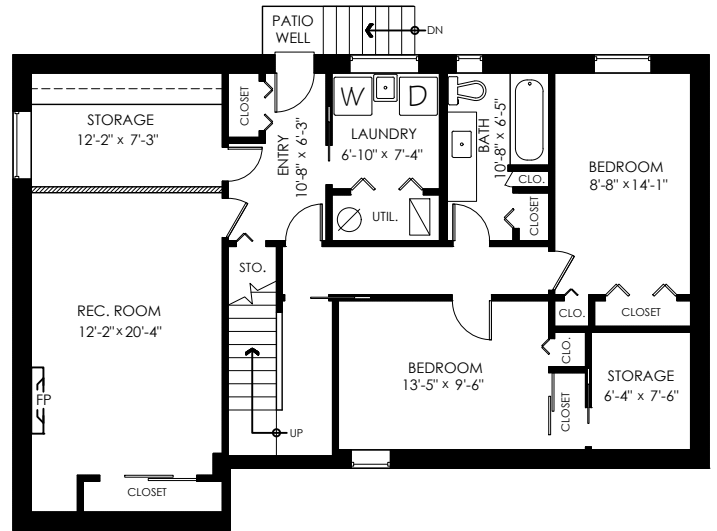
Main Floor: 1,528 sq.ft.
 Lower Floor: 1,223 sq.ft.
Total Livable: 2,751 sq.ft.

Garages: 453 sq.ft.
Grand Total: 3,204 sq.ft.

Patio: 251 sq.ft.
 Patio Well: 12 sq.ft.
 Deck: 318 sq.ft.
 Porch: 17 sq.ft.
Total Extras: 598 sq.ft.



Main Floor Plan
 Floor Area: 1528 sq.ft.
 Ceiling Height: 8'-0"



Lower Floor Plan
 Floor Area: 1223 sq.ft.
 Ceiling Height: 7'-10"

