

604-859-2341

andrew@andrewbracewell.ca

www.andrewbracewell.ca

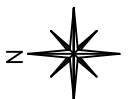
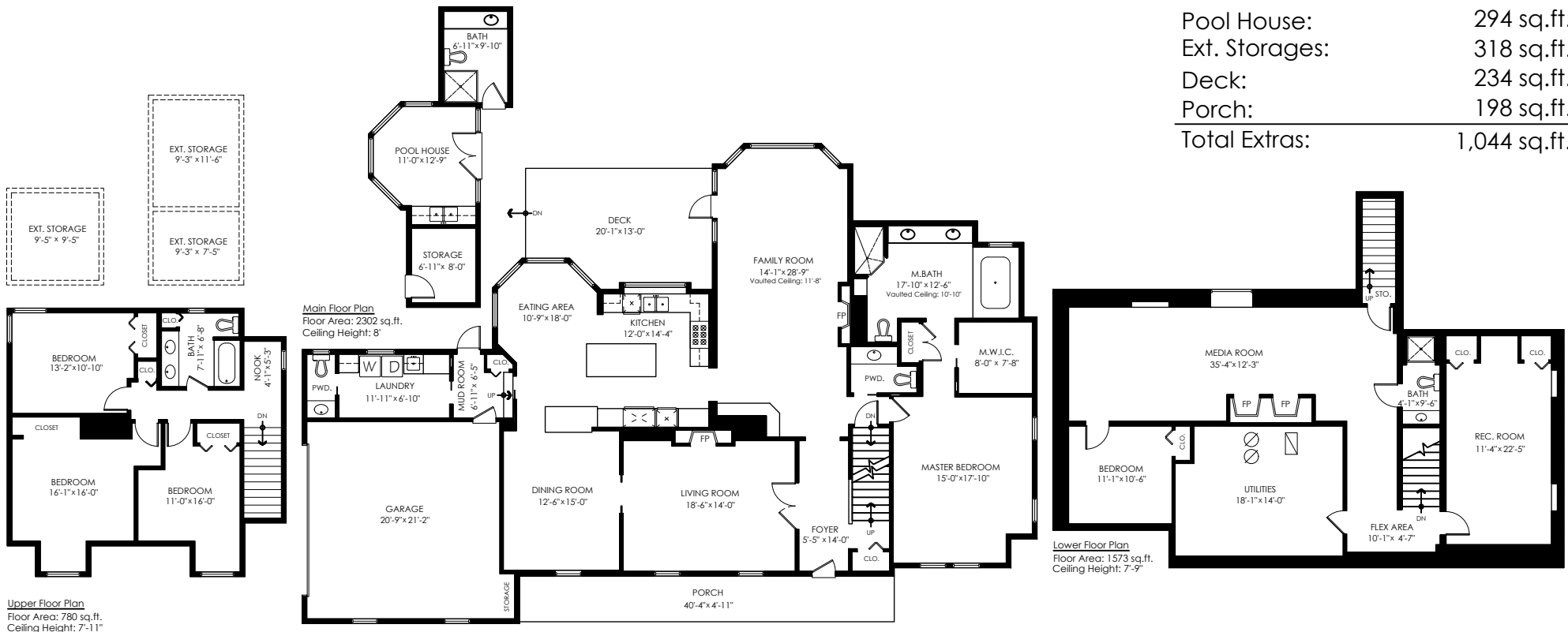


2116 Orchard Dr,
Abbotsford

Main Floor:	2,302 sq.ft.
Upper Floor:	780 sq.ft.
Lower Floor:	1,573 sq.ft.
Total Livable:	4,655 sq.ft.

Garage:	472 sq.ft.
Grand Total:	5,127 sq.ft.

Pool House:	294 sq.ft.
Ext. Storages:	318 sq.ft.
Deck:	234 sq.ft.
Porch:	198 sq.ft.
Total Extras:	1,044 sq.ft.



E&O Insured. Total square foot calculated to gross unit area. SQFT based on interior measurements to exterior walls, not taken from original blueprints, may include unfinished area. This is for marketing purposes only and is not intended for architectural/construction use. All details, sizes & placements should be considered approximate within +/- 2% tolerance.

MEASURED ON: (2021-09-14)
 info@pixlworks.com www.pixlworks.com 604.329.5788

