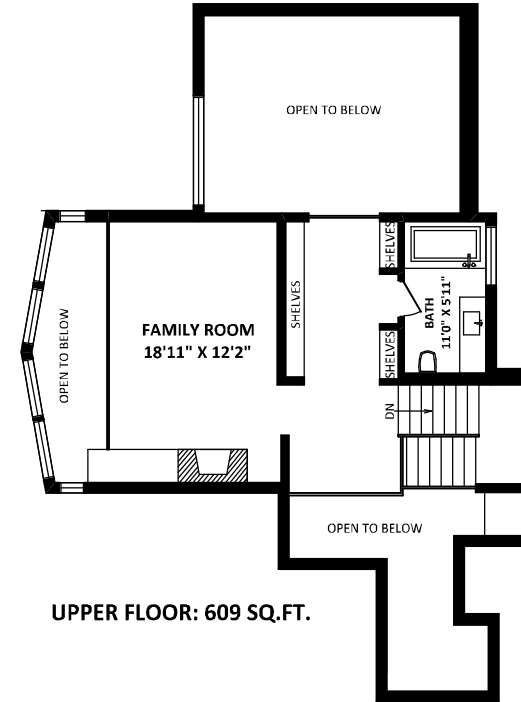
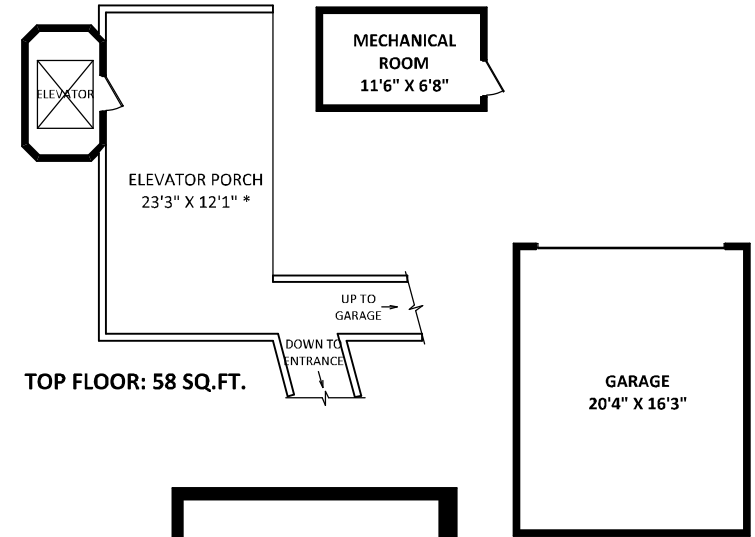
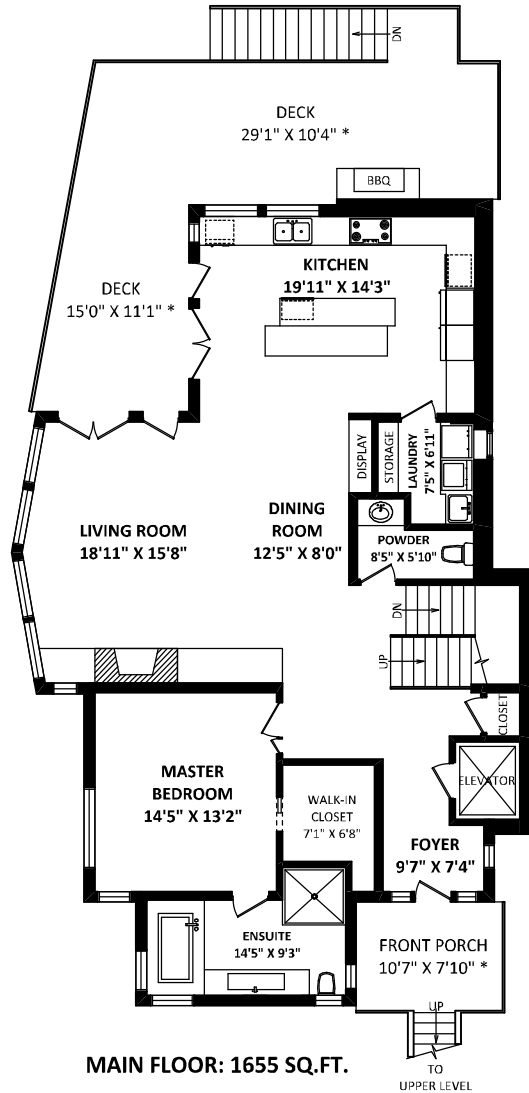
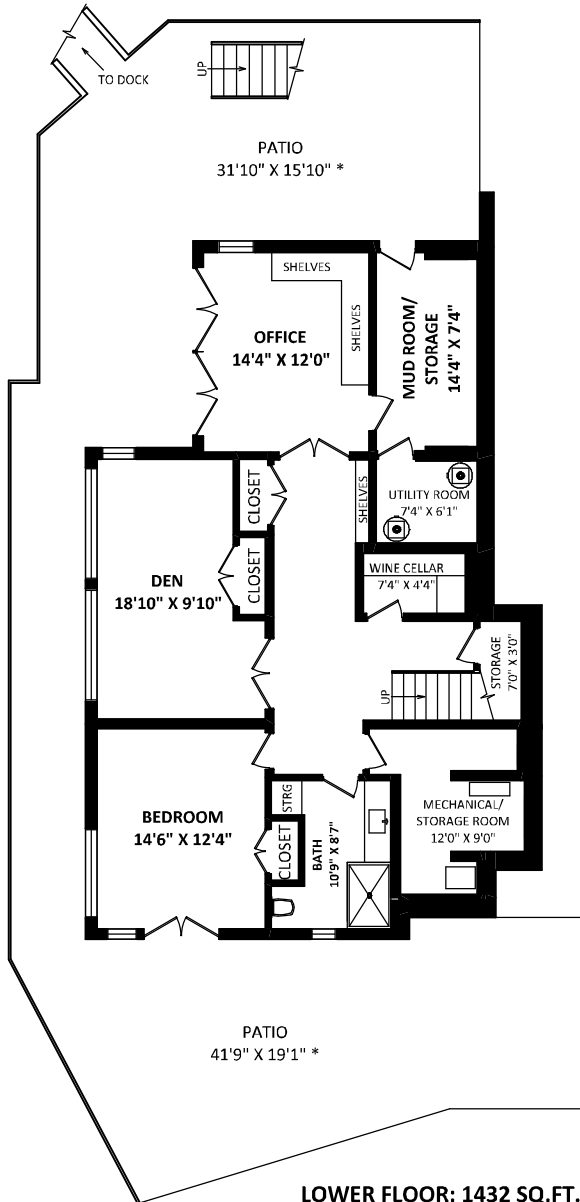


TOTAL FINISHED AREA: 3754 SQ.FT.

OTHER AREA(S)
GARAGE: 362 SQ.FT.
MECHANICAL ROOM (TOP FL): 93 SQ.FT.
FRONT PORCH: 86 SQ.FT.*
ELEVATOR PORCH: 301 SQ.FT.*
DECK: 486 SQ.FT.*
PATIO: 1442 SQ.FT.*
MECHANICAL ROOM (TOP FL): 93 SQ.FT.

**5691 Sunshine Falls Lane
North Vancouver, BC**



SCALE: 0 2 5 10 FT.

[JUNE 14, 2021]
SEEVIRTUAL
TEL: 604-575-1244
www.seevirtual360.com

DISCLAIMERS:
1. MEASUREMENTS ARE FOR PROMOTIONAL USE ONLY & ARE NOT INTENDED FOR CONSTRUCTION. USE ROOM DIMENSIONS ARE APPROXIMATE. MEASUREMENTS & CALCULATIONS FOR FINISHED AREAS ARE EGO INSURED.
2. FINISHED AREAS ARE ENCLOSED AREAS IN A HOUSE. FRAMING IS SUITABLE FOR YEAR ROUND USE. UNENCLOSING WALLS, FLOORS, AND CEILINGS THAT ARE SIMILAR TO THE REST OF THE HOUSE. (ANSI Z765-2013)
3. THE ENCLOSED STAIRS & HALLWAYS, THE FLOOR TO CEILING, FLOOR OR HALLWAY IS CALCULATED TO THE EXTERIOR FINISHED SURFACE OF THE OUTSIDE WALLS. (ANSI Z765-2013)
4. THIS FLOOR PLAN MAY ONLY BE REPRODUCED WITH THE PERMISSION OF THE REALTOR(S) ON THIS FLOOR PLAN.
* ANY MEASUREMENTS WITHIN AN AS IS (EKG, TI) OR (APPROX) ARE APPROXIMATE AND FOR ILLUSTRATION PURPOSES ONLY AND ARE NOT EGO INSURED.