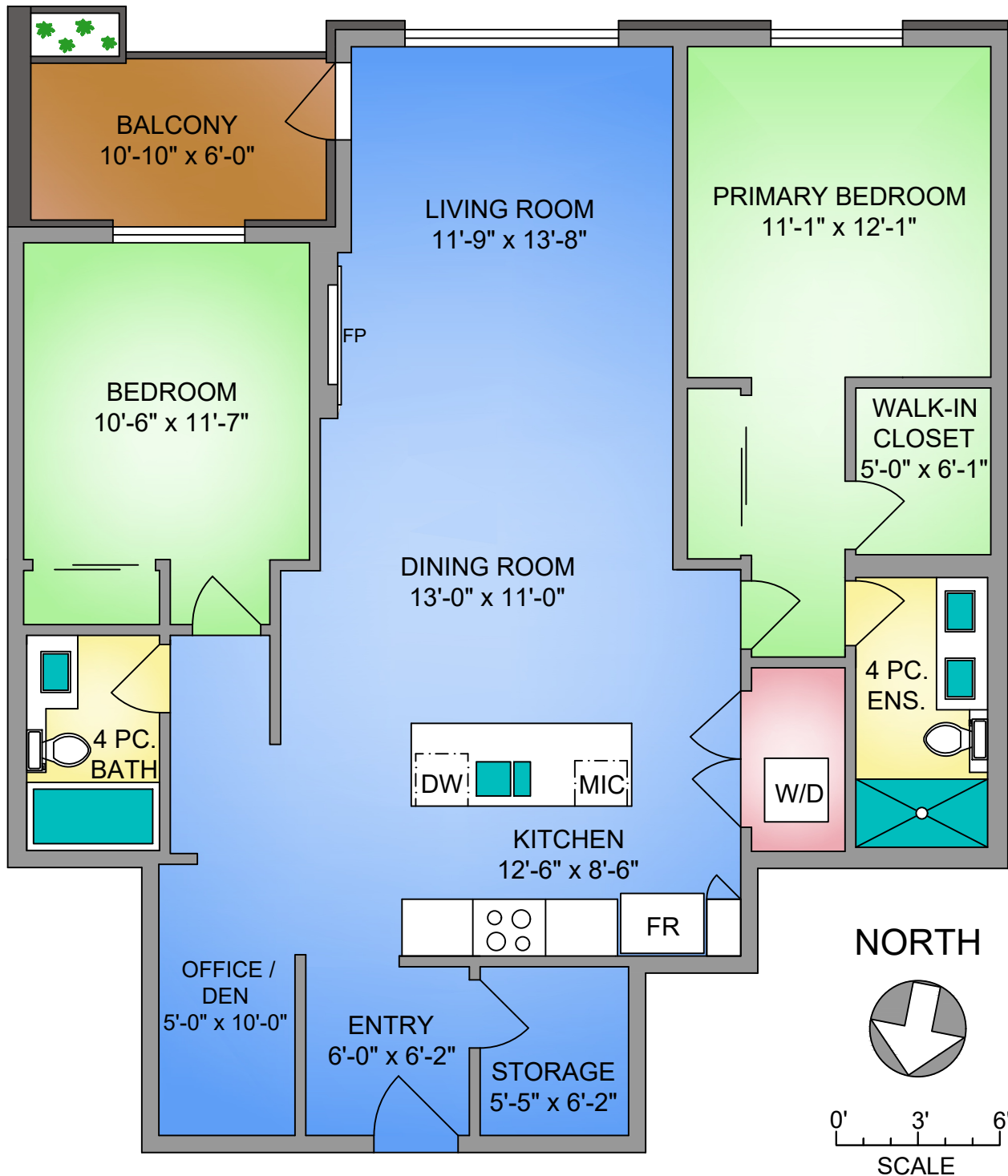


UNIT 302 - 2285 BOWKER AVENUE  
1210 SQ. FT.  
9' CEILING HEIGHT



UNIT 302 - 2285 BOWKER AVENUE		
OCTOBER 7, 2025		
PREPARED FOR THE EXCLUSIVE USE OF ALLISON DUCLUZEAU		
PLANS MAY NOT BE 100% ACCURATE, IF CRITICAL BUYER TO VERIFY.		
FLOOR	AREA (SQ. FT.)	
	FINISHED	BALCONY
THIRD	1210	65