

01

EF98915/76
zy

PLAN VIP54805

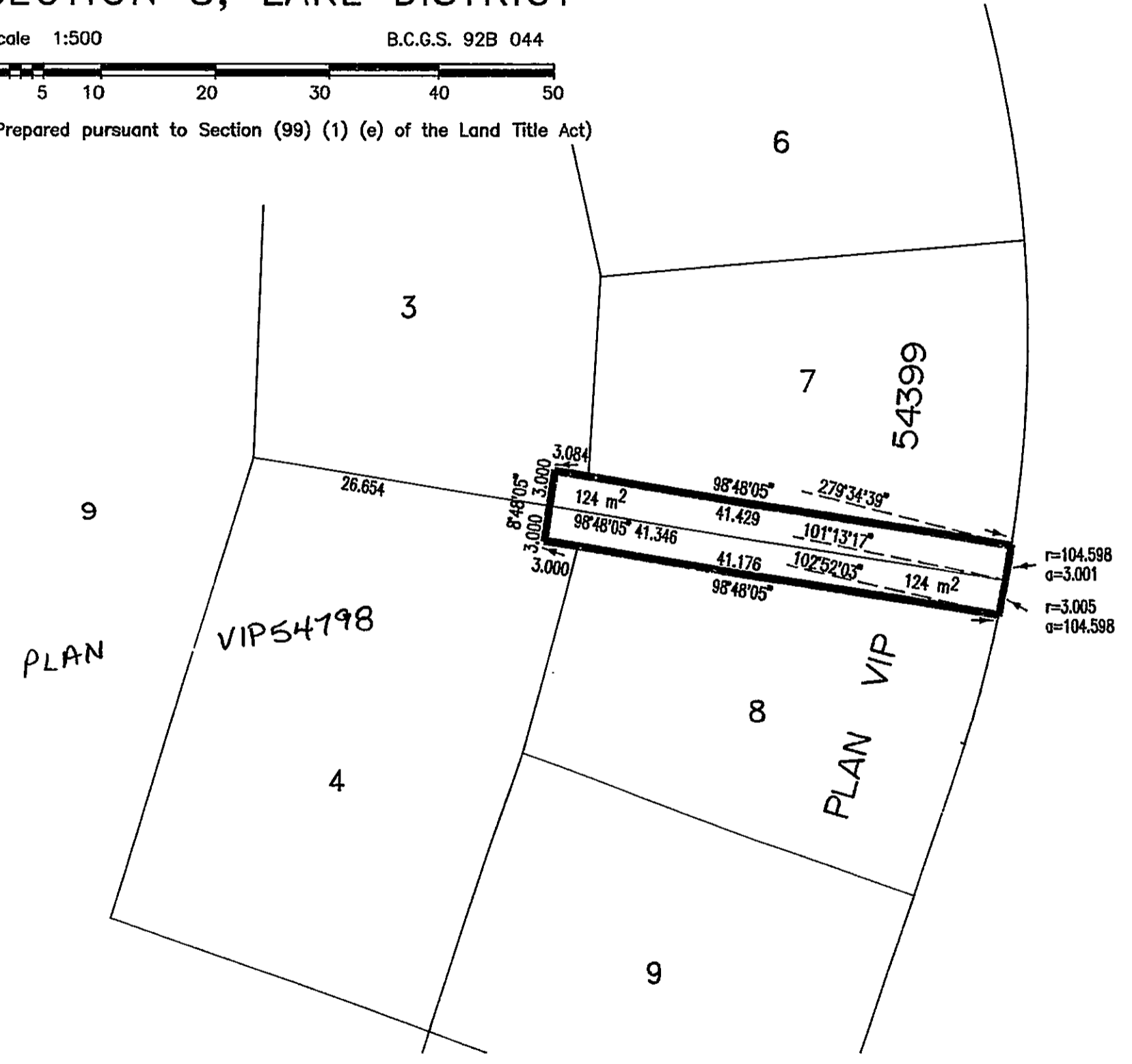
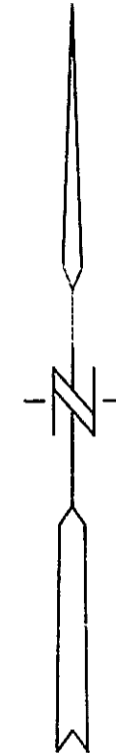
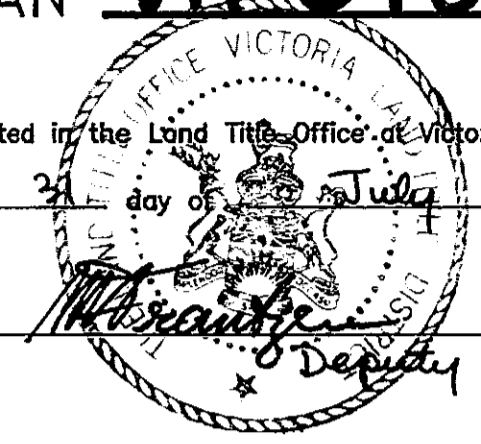
EXPLANATORY PLAN OF
EASEMENT OVER PARTS OF
LOTS 3 AND 4, PLAN VIP54798,
SECTION 8, LAKE DISTRICT

Scale 1:500 B.C.G.S. 92B 044



(Prepared pursuant to Section (99) (1) (e) of the Land Title Act)

Deposited in the Land Title Office at Victoria, B.C., this
21 day of July, 1992.



Legend _____

All distances shown are in metres
Grid Bearings are derived from
Plan VIP54798
Integrated Survey Area No. 30, Saanich.

This plan shows ground level measured distances.
Prior to computation of U.T.M. coordinates multiply
by a combined factor of .9996030533

J.E. ANDERSON & ASSOCIATES
B.C. Land Surveyors - Consulting Engineers
Victoria and Nanaimo, B.C.
File : 15240

This plan lies within the
Capital Regional District.

Certified correct this 19th day of May, 1992.

G.J. Anderson B.C.L.S.