

106 - 3680 BANFF COURT

NORTH VANCOUVER, BC



HELEN GRANT

Personal Real Estate Corporation

604-802-4528

helen@helengrant.com

Stilhavn Real Estate Services



MARK EILERS

Personal Real Estate Corporation

604-785-6275

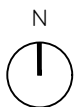
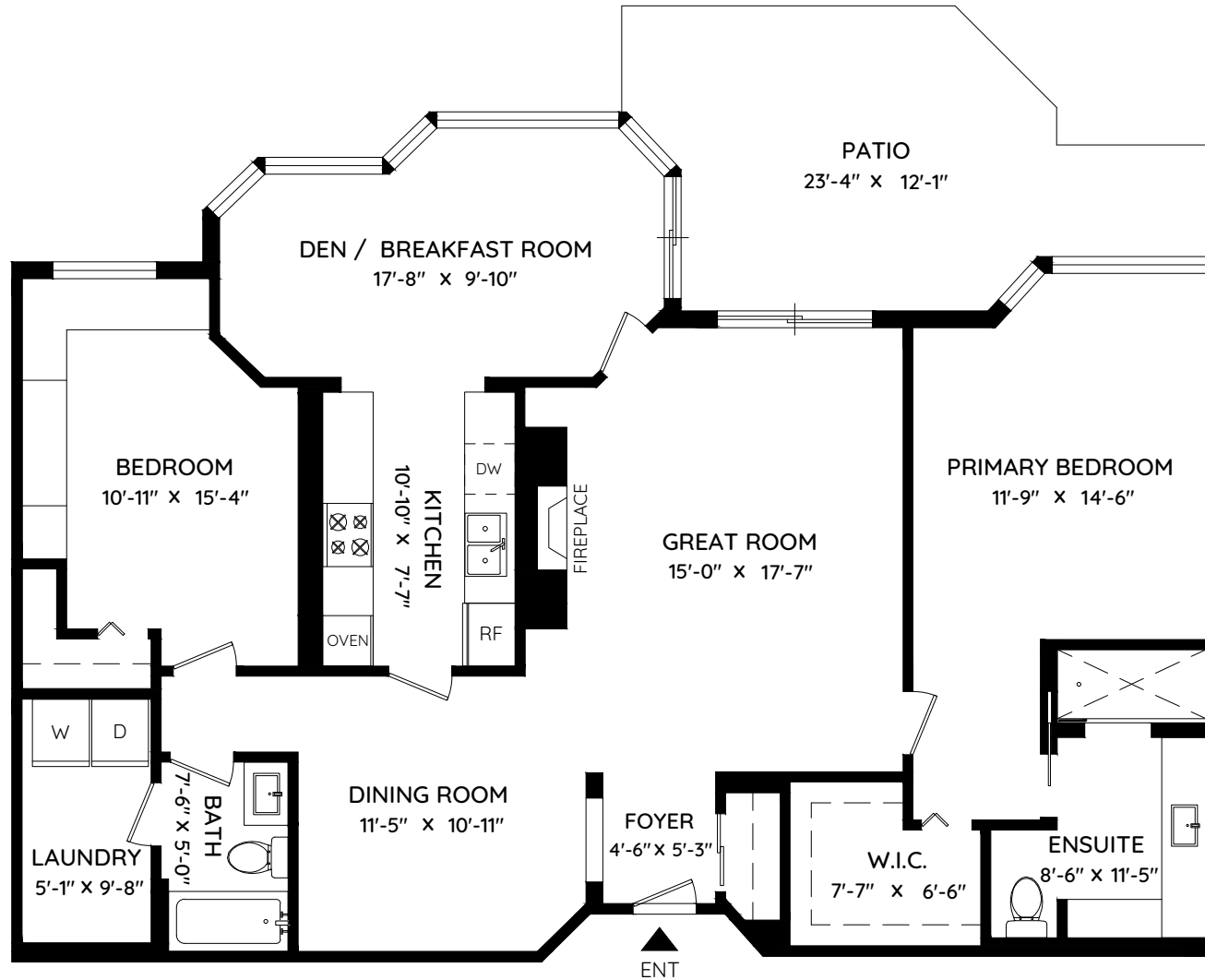
mark@markeilers.com

Stilhavn Real Estate Services

LIVING AREA 1,380 SQ.FT.

PATIO 207 SQ.FT.

CEILING HEIGHT 8'-0"



0 ft 3 ft 5 ft 10 ft



The floor plan and the measurements are approximate within +/- 2% and are to be used for advertising usage only. May include unfinished area. Not suitable for architectural or construction. E&O Insured