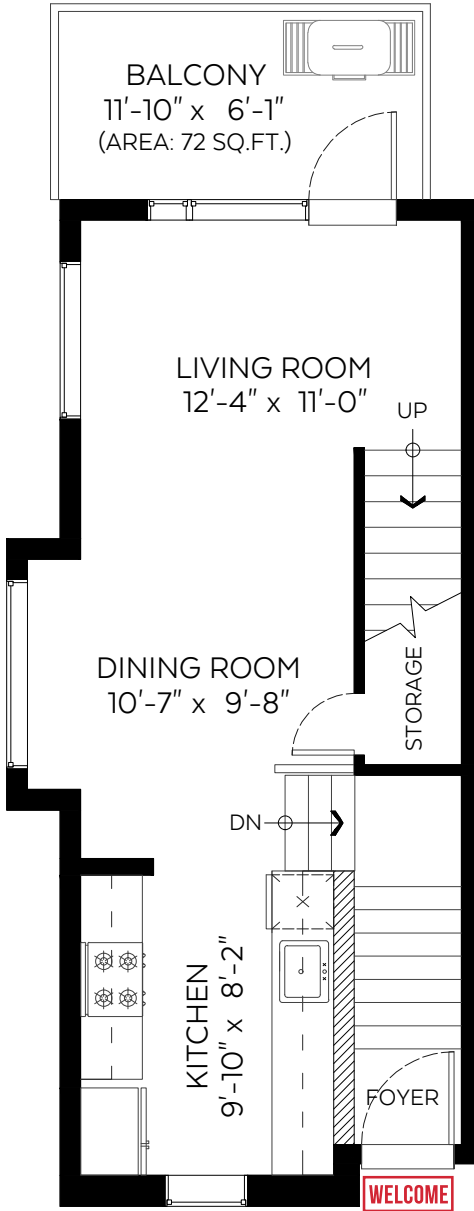


Main Floor:	449 sq.ft.
Upper Floor:	435 sq.ft.
Top Floor:	339 sq.ft.
<b>Total:</b>	<b>1,223 sq.ft.</b>

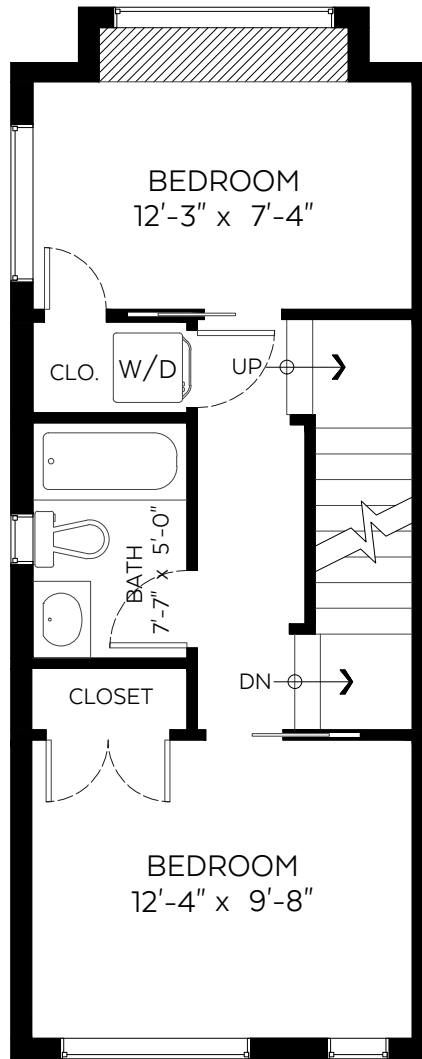
**Auxiliary Area**

Balconies:	151 sq.ft.
------------	------------



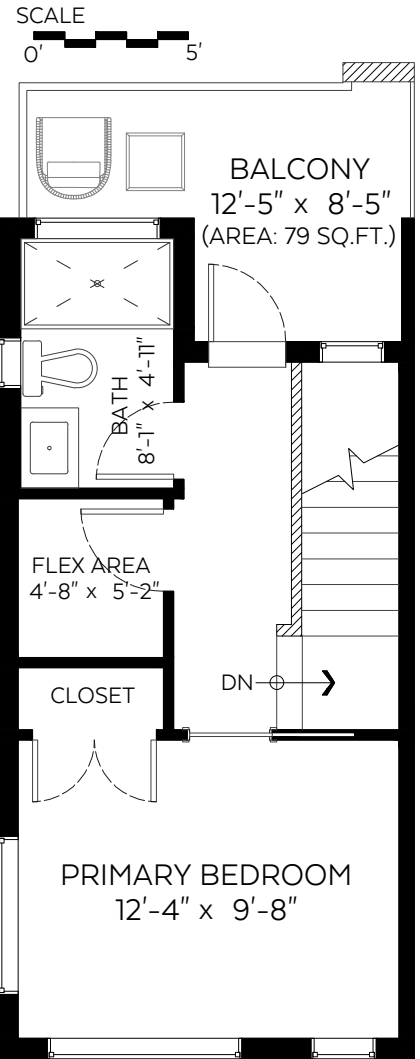
**Main Floor Plan**

Floor Area: 449 sq.ft.  
 Ceiling Height: 9 ft.



**Upper Floor Plan**

Floor Area: 435 sq.ft.  
 Ceiling Height: 8 ft.



**Top Floor Plan**

Floor Area: 339 sq.ft.  
 Ceiling Height: 8 ft.