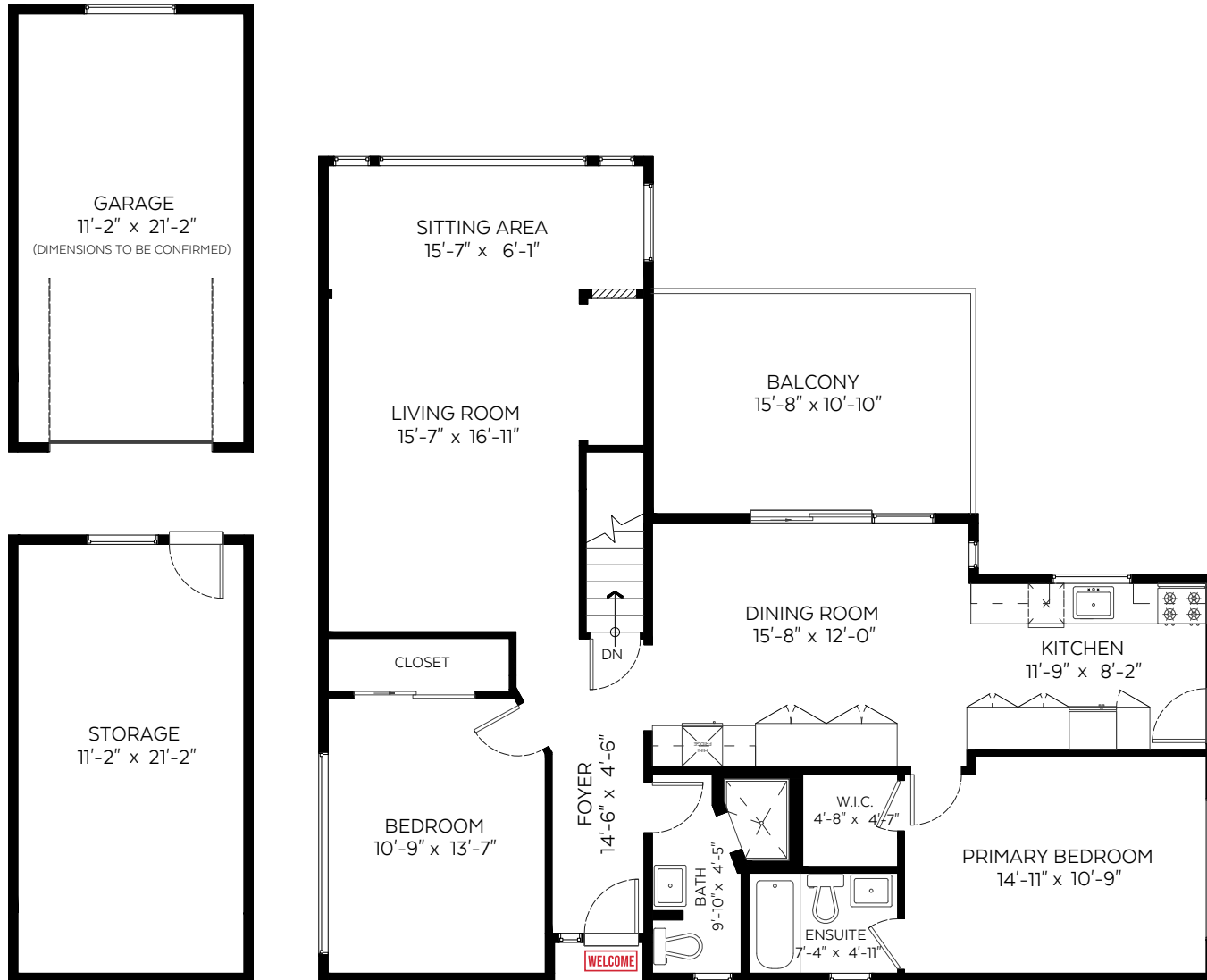


1960 Orchard Way,
 West Vancouver, B.C.

Main Floor:	1,274 sq.ft.
Lower Floor:	342 sq.ft.
Total:	1,616 sq.ft.

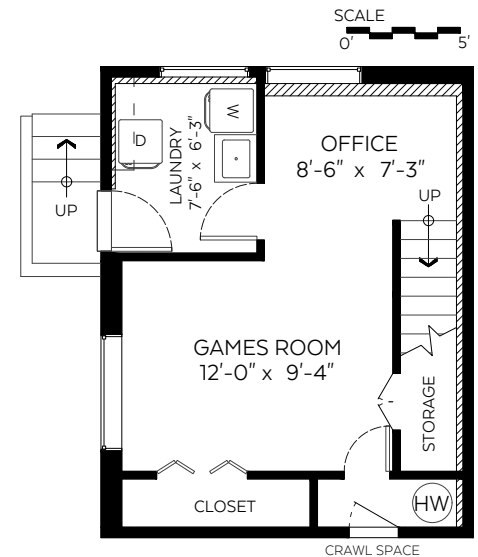
Auxiliary Area

Garage:	267 sq.ft.
Storage:	267 sq.ft.
Balcony:	171 sq.ft.



Main Floor Plan
 Floor Area: 1,274 sq.ft.

Valid Until: February 10, 2026



Lower Floor Plan
 Floor Area: 342 sq.ft.



OAKWYN REALTY

The floor plan is not suitable for architectural/construction and is covered under E&O. © Excelsior Measuring Inc. 2025. All rights reserved for Excelsior Measuring Inc. Users shall not publish and distribute such material (in whole or in part) and/or incorporate it in other works in any form.



NORTH

