

Main Floor: 550 sq.ft.
 Upper Floor: 641 sq.ft.

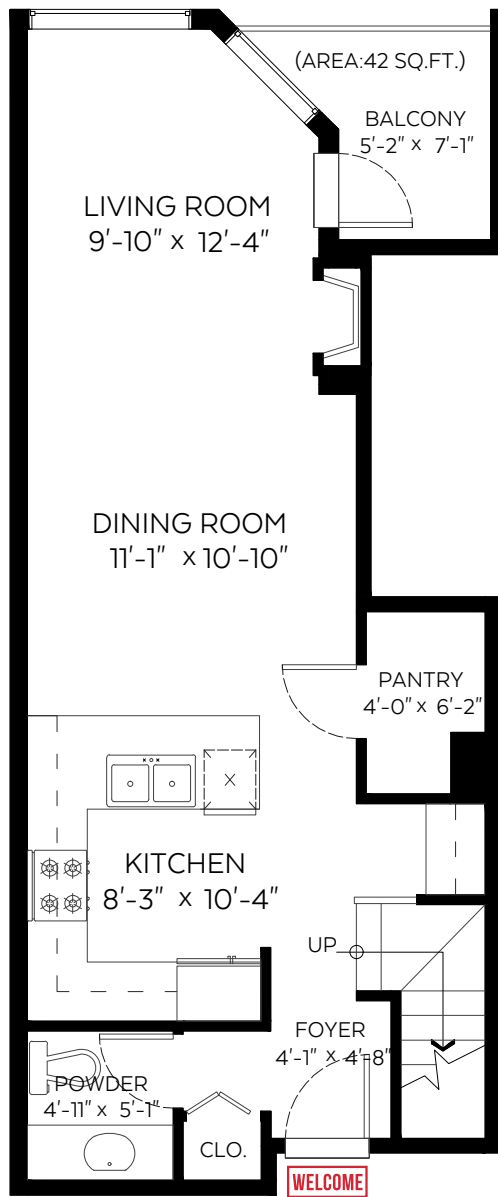
Total: 1,191 sq.ft.

Auxiliary Area

Balconies: 67 sq.ft.

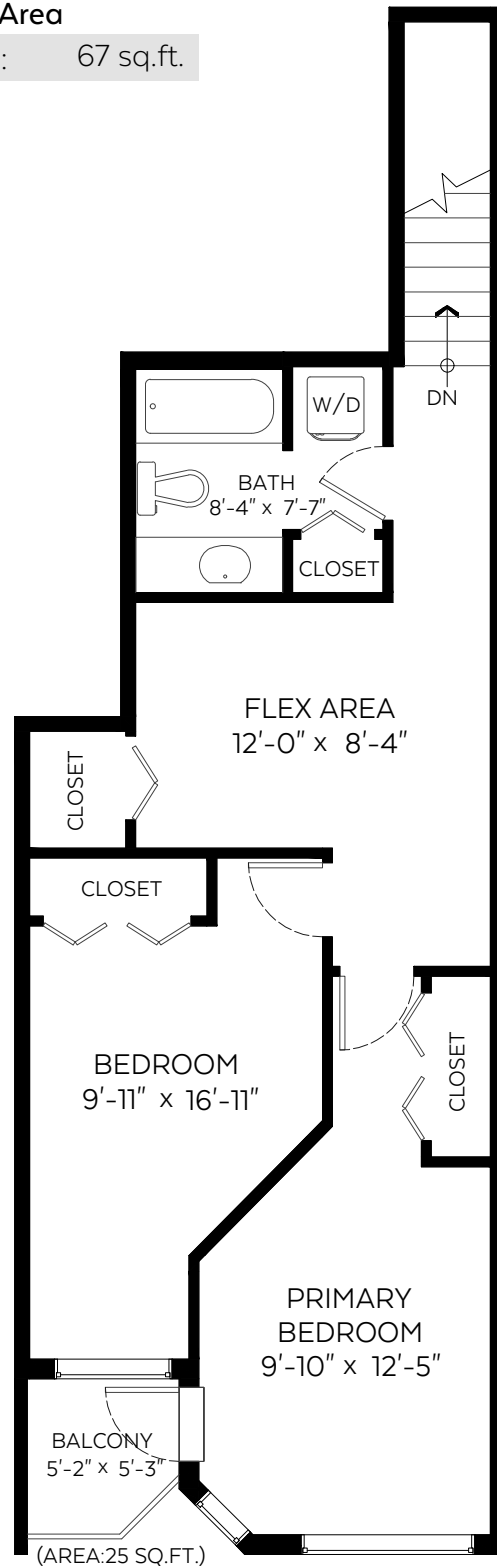
#306-1707 Charles Street,
 Vancouver, B.C.

SCALE
 0' 5'



Main Floor Plan

Floor Area: 550 sq.ft.
 Ceiling Height: 8 ft.



Upper Floor Plan

Floor Area: 641 sq.ft.
 Ceiling Height: 8 ft.



Valid Until: December 28, 2025

The floor plan is not suitable for architectural/construction and is covered under E&O. © Excelsior Measuring Inc. 2025. All rights reserved for Excelsior Measuring Inc. Users shall not publish and distribute such material (in whole or in part) and/or incorporate it in other works in any form.



NORTH

