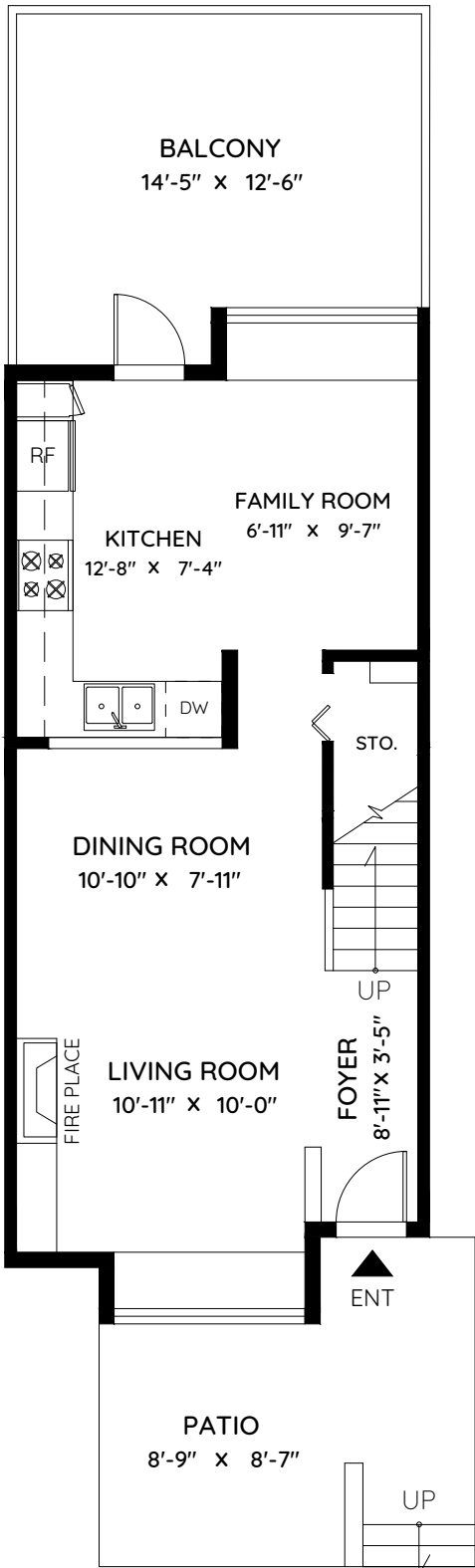


# 11 - 995 LYNN VALLEY ROAD

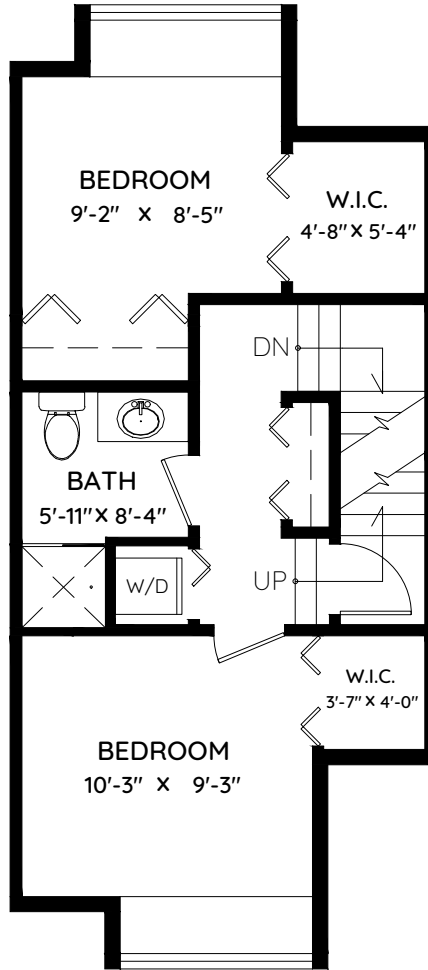
NORTH VANCOUVER, BC

# David Matiru

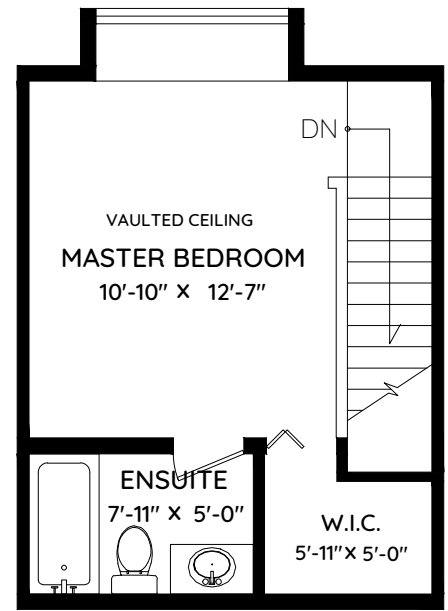
Personal Real Estate Corporation  
 david@davidmatiru.com • 778 688 6977 **stillhavN**  
REAL ESTATE SERVICES



**MAIN FLOOR**  
510 SQ.FT.  
CH: 8'-0"



**UPPER FLOOR**  
453 SQ.FT.  
CH: 8'-0"



**LOWER FLOOR**  
305 SQ.FT.  
CH: 10'-1"

MAIN	510 SQ.FT.
UPPER	453 SQ.FT.
LOWER	305 SQ.FT.
<b>TOTAL</b>	<b>1,268 SQ.FT.</b>
PATIO	132 SQ.FT.
BALCONY	175 SQ.FT.
<b>TOTAL</b>	<b>307 SQ.FT.</b>



0 ft 3 ft 5 ft

The floor plan and the measurements are approximate and are to be used for advertising usage only.  
 Not suitable for architectural or construction. E&O Insured