

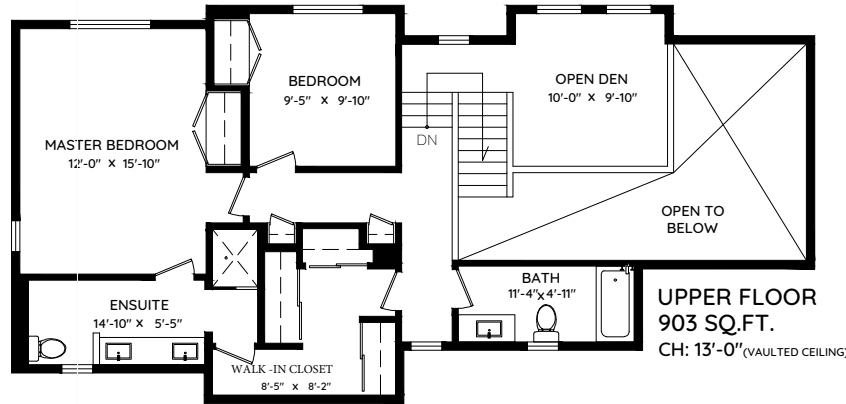
4419 PATTERDALE DRIVE

NORTH VANCOUVER, BC

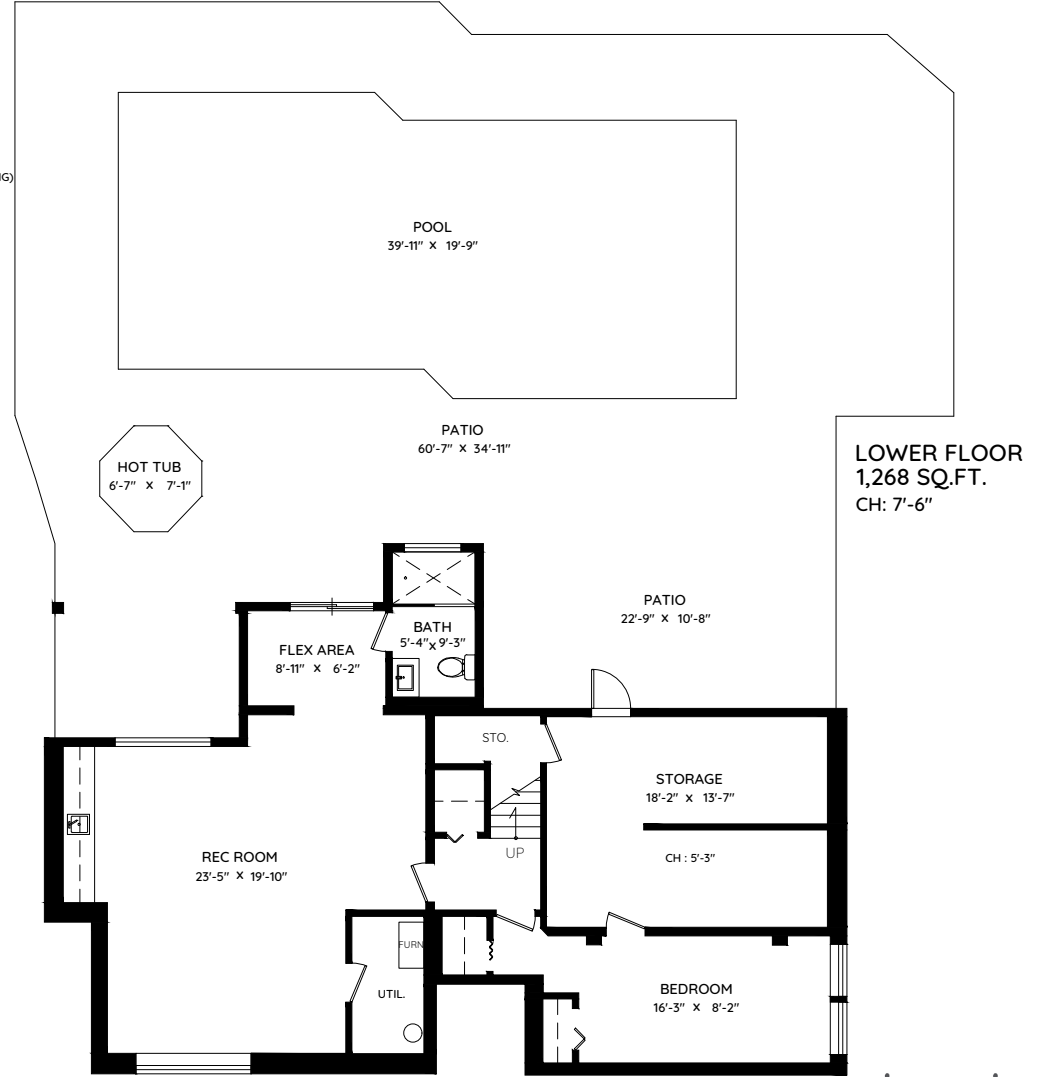
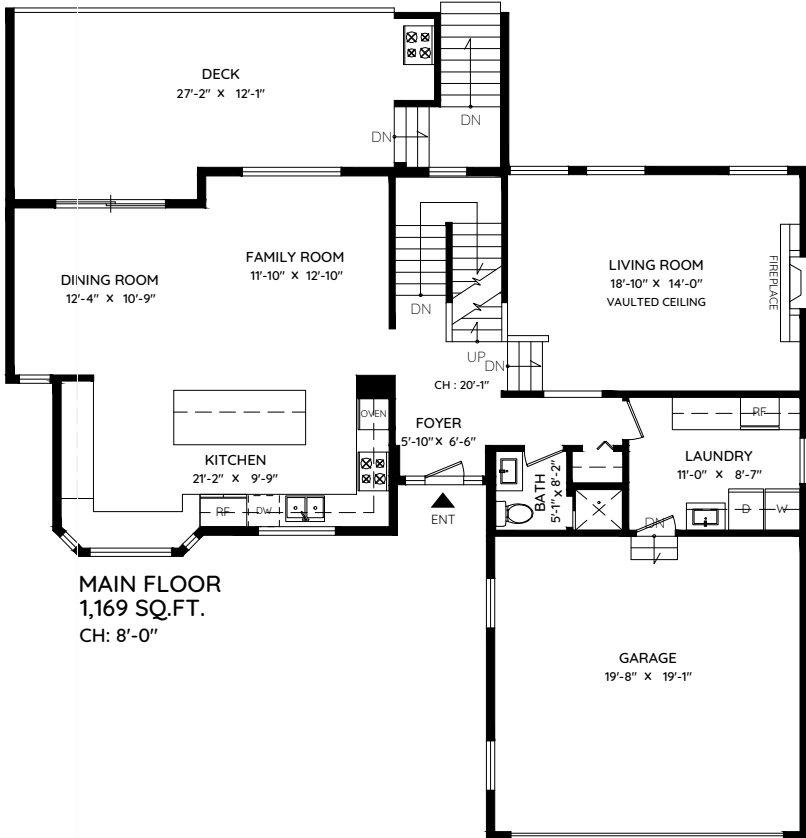
MAIN	1,169 SQ.FT.	GARAGE	407 SQ.FT.
UPPER	903 SQ.FT.	DECK	360 SQ.FT.
LOWER	1,268 SQ.FT.	PATIO	1653 SQ.FT.
		POOL	708 SQ.FT.
		HOT TUB	35 SQ.FT.
TOTAL	3,340 SQ.FT.	TOTAL	3,163 SQ.FT.

David Matiru

Personal Real Estate Corporation
 david@davidmatiru.com • 778 688 6977 **stillhavn**
REAL ESTATE SERVICES



* NOTE UPSTAIRS WALKIN CLOSET EASY CONVERSION TO BEDROOM



0 ft 3 ft 5 ft 10 ft

The floor plan and the measurements are approximate within +/- 2% and are to be used for advertising usage only.
 May include unfinished area. Not suitable for architectural or construction. E&O Insured