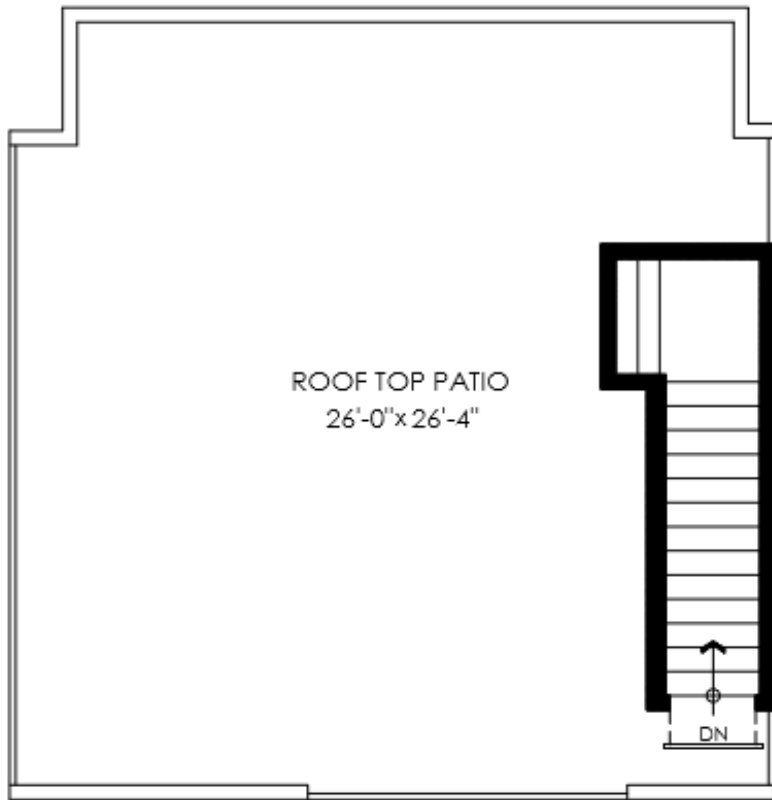


# 408 733 W 14th

## North Vancouver, BC

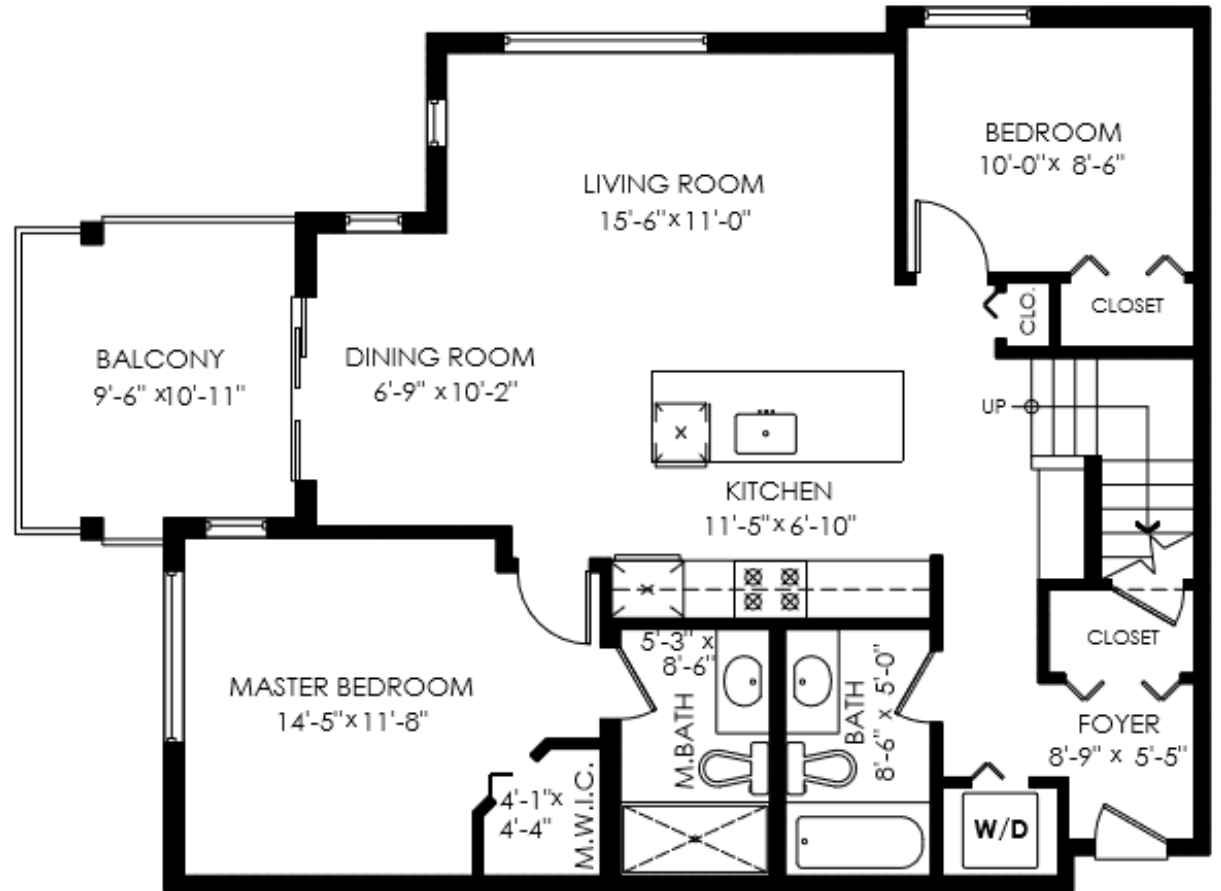
Main Floor: 967 sq.ft.  
 Roof Top Entry Floor: 79 sq.ft.  
**Total: 1,046 sq.ft.**

Roof Top Patio: 598 sq.ft.  
 Balcony: 98 sq.ft.  
**Total Extras: 696 sq.ft.**



**Roof Top Entry Plan**

Floor Area: 79 sq.ft.  
 Roof Top: 598 sq.ft.



**Main Floor Plan**

Floor Area: 967 sq.ft.  
 Ceiling Height: 8'-11"

