

**935 Keil Street,**  
White Rock, BC



**KATHLEEN THOMAS**

*Bay Realty Ltd.*

Office: 604-531-4000

Cell: 778-773-0146

kathleen@bayrealty.com

www.kathleenthomas.ca



**RHYS LEONARD**

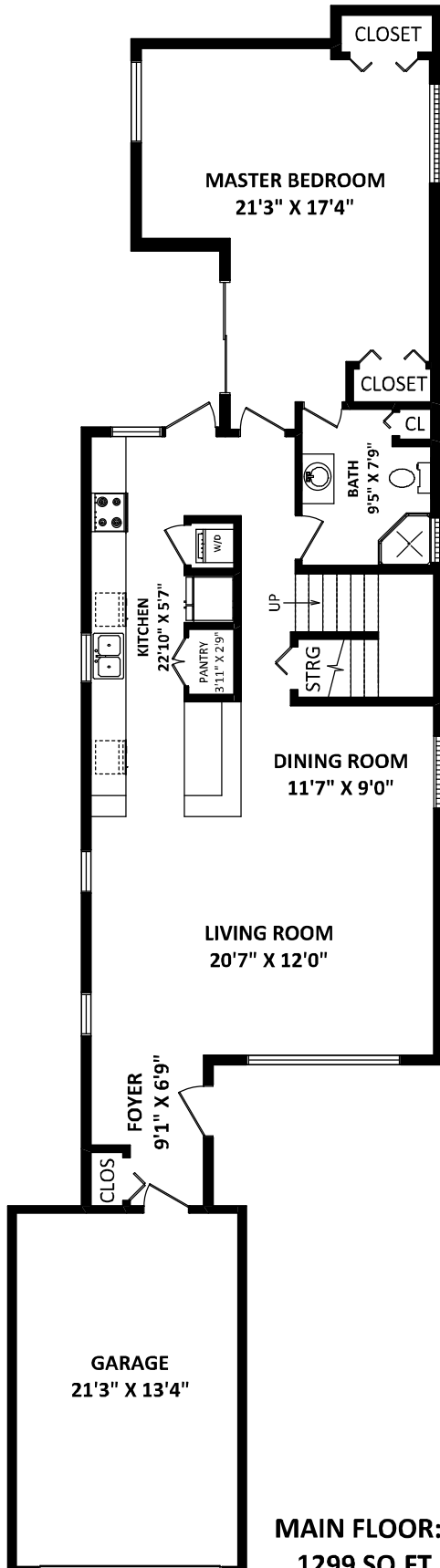
*Bay Realty Ltd.*

Office: 604-531-4000

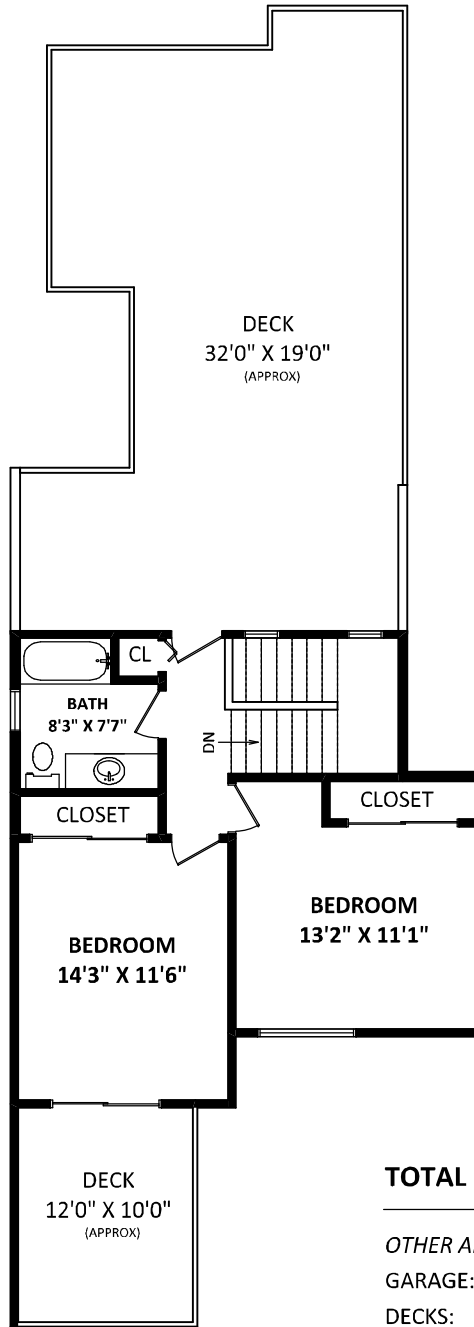
Cell: 604-783-5575

rhys@bayrealty.com

www.rhysleonard.com



**MAIN FLOOR:**  
**1299 SQ.FT.**



**UPPER FLOOR: 591 SQ.FT.**

**TOTAL FINISHED AREA: 1890 SQ.FT.**

*OTHER AREA(S)*

GARAGE: 313 SQ.FT.

DECKS: 748 SQ.FT.\*



GENERAL NOTES:  
1. MEASUREMENTS ARE FOR PROMOTIONAL USE ONLY & ARE NOT INTENDED FOR CONSTRUCTION USE.  
2. MEASUREMENTS ARE APPROXIMATE. MEASUREMENTS & CALCULATIONS FOR FINISHED AREAS ARE E&O INSURED.  
3. FINISHED AREAS ARE ENCLOSED AREAS IN A HOUSE THAT ARE SUITABLE FOR YEAR-ROUND USE, EMBODIED WALLS, FLOORS, AND CEILINGS THAT ARE SIMILAR TO THE REST OF THE HOUSE. (ANSI Z765-2003)  
4. THIS FLOOR PLAN MAY ONLY BE REPRODUCED WITH PERMISSION OF THE REALTOR(S) ON THIS FLOOR PLAN.  
\* ANY MEASUREMENT WITH AN ASTERISK (\*) OR (APPROX) ARE APPROXIMATE AND FOR ILLUSTRATION PURPOSES ONLY AND ARE NOT E&O INSURED.

[FEBRUARY 25, 2016]



TEL: 604-575-1244  
www.seevirtual360.com