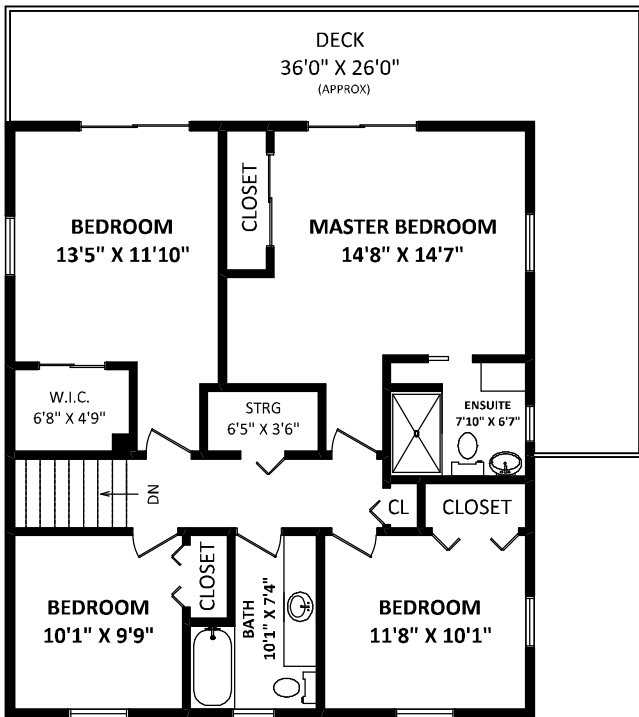


21309 24 Avenue,
Langley, BC



KATHLEEN THOMAS

Bay Realty

Office: 604-531-4000
Cell: 778-773-0146
kathleen@bayrealty.com
www.kathleenthomas.ca



RHYS LEONARD

Bay Realty

Office: 604-531-4000
Cell: 604-783-5575
rhys@bayrealty.com
www.rhysleonard.com

TOTAL FINISHED AREA: 3284 SQ.FT.

MAIN HOUSE: 2409 SQ.FT.

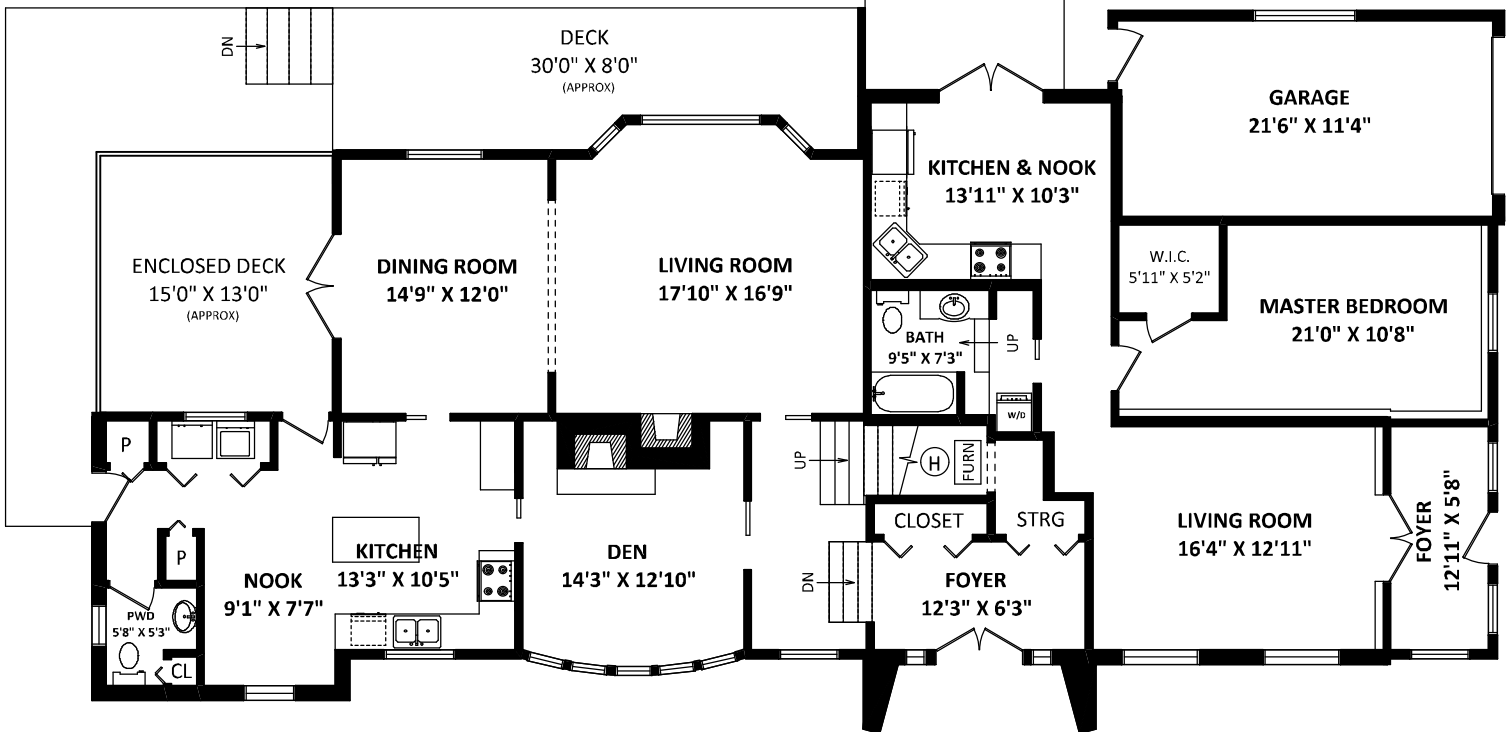
GUEST SUITE: 875 SQ.FT.

OTHER AREA(S)

GARAGE: 268 SQ.FT.

DECKS: 1260 SQ.FT.*

**MAIN HOUSE
UPPER FLOOR: 1055 SQ.FT.**



**MAIN HOUSE
MAIN FLOOR: 1354 SQ.FT.**

GUEST SUITE: 875 SQ.FT.

DISCLAIMER:
1. MEASUREMENTS ARE FOR PROMOTIONAL USE ONLY & ARE NOT INTENDED FOR CONSTRUCTION USE. ROOM DIMENSIONS ARE APPROXIMATE. MEASUREMENTS & CALCULATIONS FOR FINISHED AREAS ARE E&O INSURED.
2. FINISHED AREAS ARE ENCLOSED AREAS IN A HOUSE THAT ARE SUITABLE FOR YEAR ROUND USE. EMBODYING WALLS, FLOORS, AND CEILINGS THAT ARE SIMILAR TO THE REST OF THE HOUSE. (ANSI Z765-2003)
3. THIS FLOOR PLAN MAY ONLY BE REPRODUCED WITH PERMISSION OF THE REALTOR(S) ON THIS FLOOR PLAN.
* ANY MEASUREMENT WITH AN ASTERISK (*) OR (APPROX) ARE APPROXIMATE AND FOR ILLUSTRATION PURPOSES ONLY AND ARE NOT E&O INSURED.



FLOOR PLAN BY: [MAY 10, 2017]
SEEVIRTUAL
TEL: 604-575-1244
www.seevirtual360.com