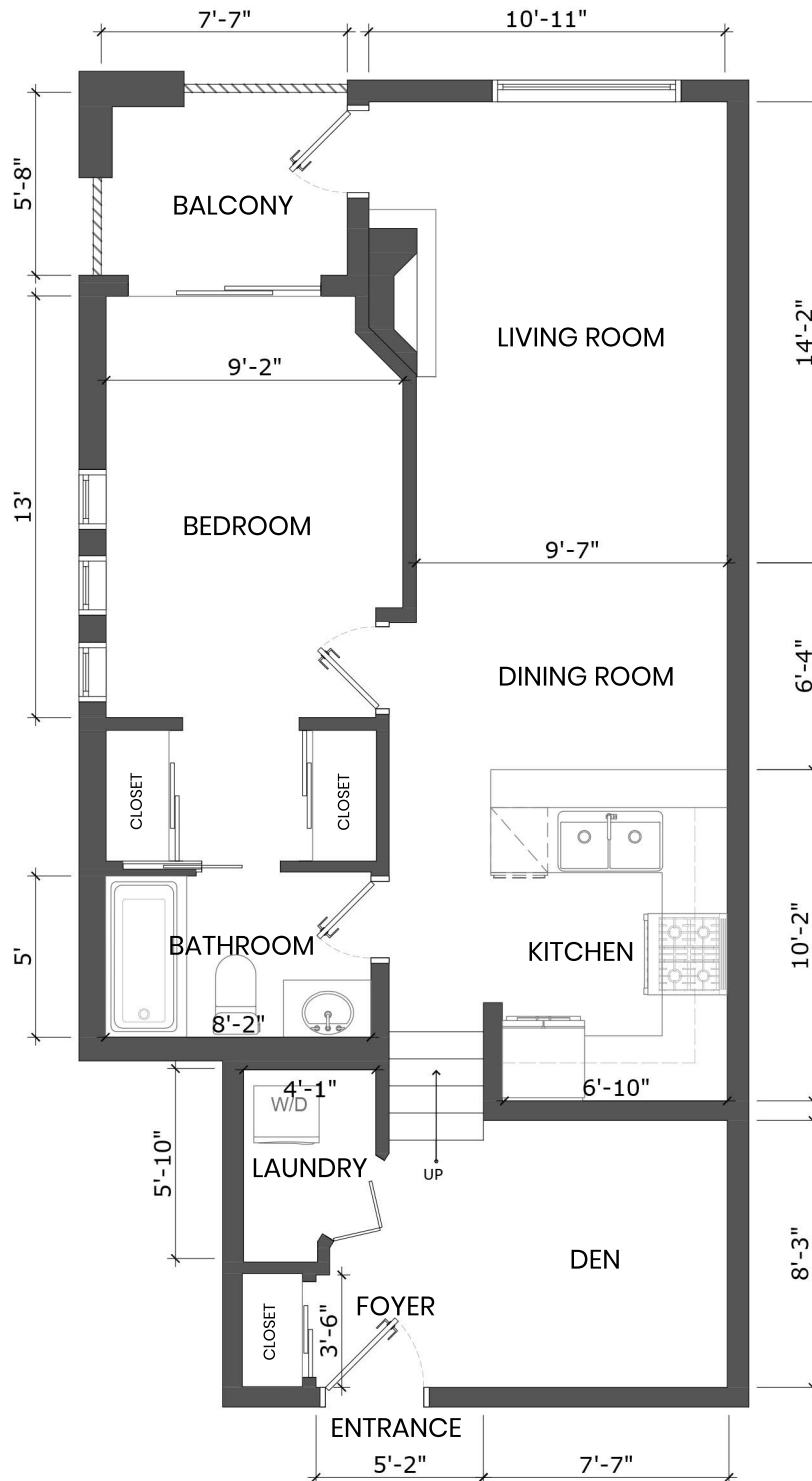


# 312-332 LONSDALE AVENUE, NORTH VANCOUVER, BC

MAIN FLOOR TOTAL: 725 SQ.FT.

BALCONY: 42 SQ.FT.



MAIN FLOOR PLAN  
Ceiling Height: 8'-0"



**Marco Pontillo** PREC\*  
604-551-8986  
marco@marcopontillo.com

\* PERSONAL REAL ESTATE CORPORATION. THE FLOOR PLAN ILLUSTRATION IS NOT SUITABLE FOR CONSTRUCTION/ ARCHITECTURAL PURPOSES. MEASUREMENTS ARE APPROXIMATE AND MAY NOT BE TO SCALE. E&O INSURED. FLOOR PLAN DESIGNED BY ISHOT.CA ENTERPRISES INC. 604-368-7979. ISHOT.CA

