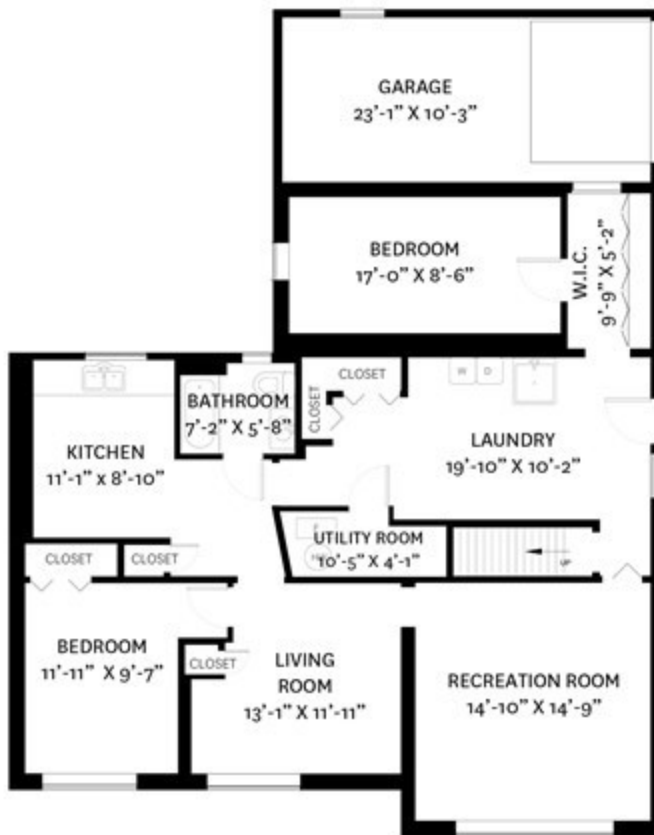


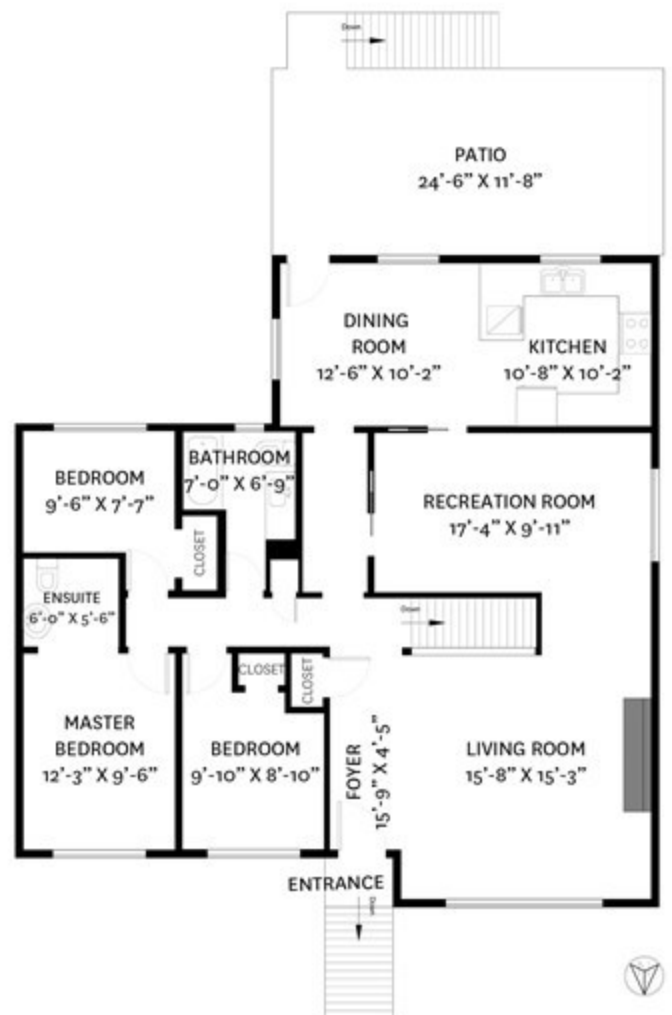
365 - 19TH STREET WEST, NORTH VANCOUVER, BC

LOWER FLOOR TOTAL: 1,415 SQ. FT.
 MAIN FLOOR TOTAL: 1,398 SQ. FT.
 TOTAL: 2,813 SQ. FT.

GARAGE: 260 SQ. FT.
 PATIO: 300 SQ. FT.



LOWER FLOOR PLAN
 Ceiling Height: 7'-1"



MAIN FLOOR PLAN
 Ceiling Height: 8'-0"

