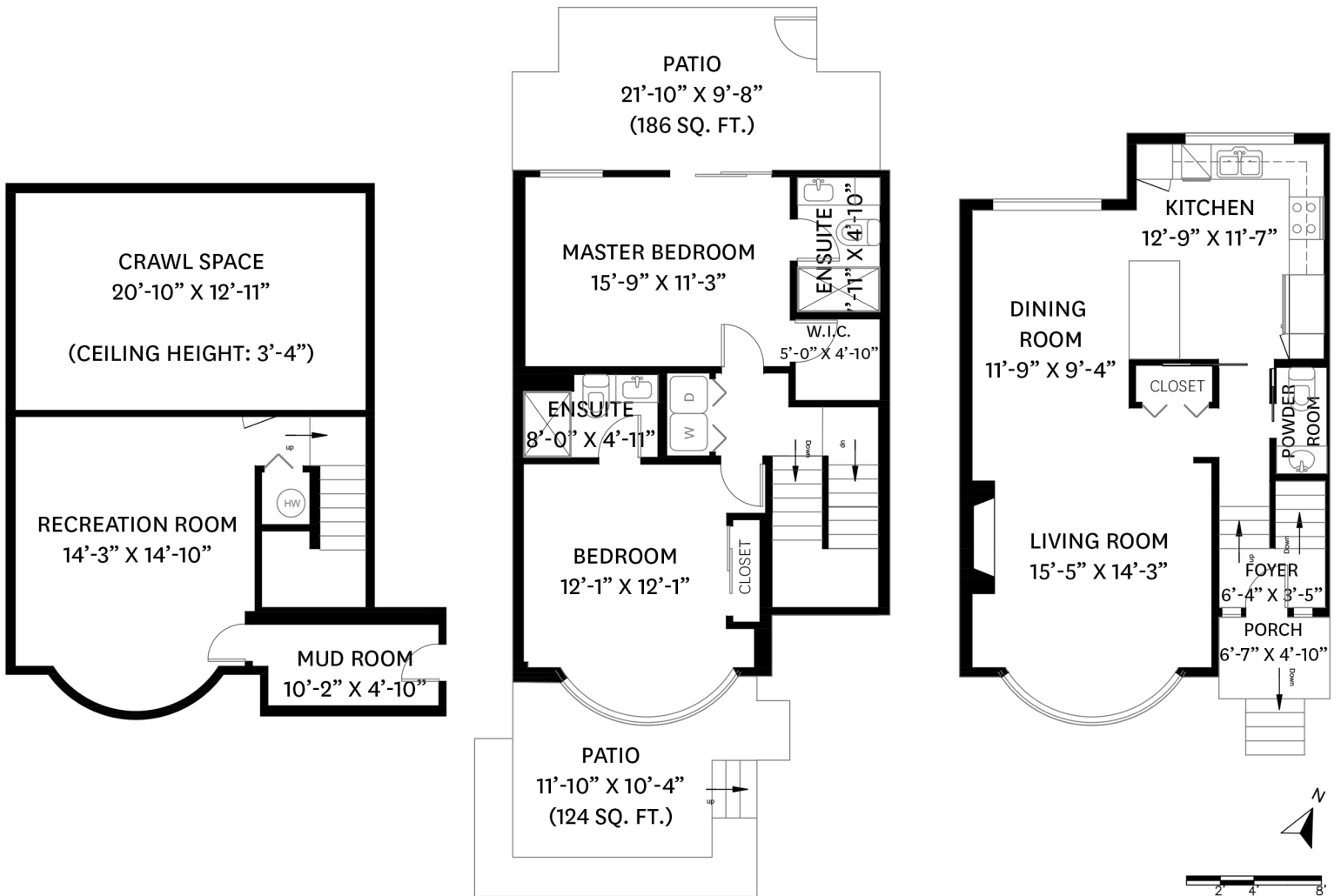


210 - 250 11TH STREET, NORTH VANCOUVER, BC

LOWER 1 FLOOR TOTAL: 226 SQ. FT.
 LOWER 2 FLOOR TOTAL: 651 SQ. FT.
 MAIN FLOOR TOTAL: 648 SQ. FT.
TOTAL: 1,525 SQ. FT.

CRAWL SPACE: 294 SQ. FT.
 PATIO: 310 SQ. FT.
 PORCH: 32 SQ. FT.



LOWER 1 FLOOR PLAN
 Ceiling Height: 7'-6"

LOWER 2 FLOOR PLAN
 Ceiling Height: 8'-0"

MAIN FLOOR PLAN
 Ceiling Height: 8'-0"
 Ceiling Height: 12'-6" (Foyer)



Marco Pontillo PREC*
 604.551.8986
 marco@marcopontillo.com

floor plan designed by
 ishot.ca Enterprises Inc.
 604-368-7979
 http://ishot.ca

*PERSONAL REAL ESTATE CORPORATION. THE FLOOR PLAN ILLUSTRATION IS NOT SUITABLE FOR CONSTRUCTION/ ARCHITECTURAL PURPOSES. MEASUREMENTS ARE APPROXIMATE AND MAY NOT BE TO SCALE. E&O INSURED.