

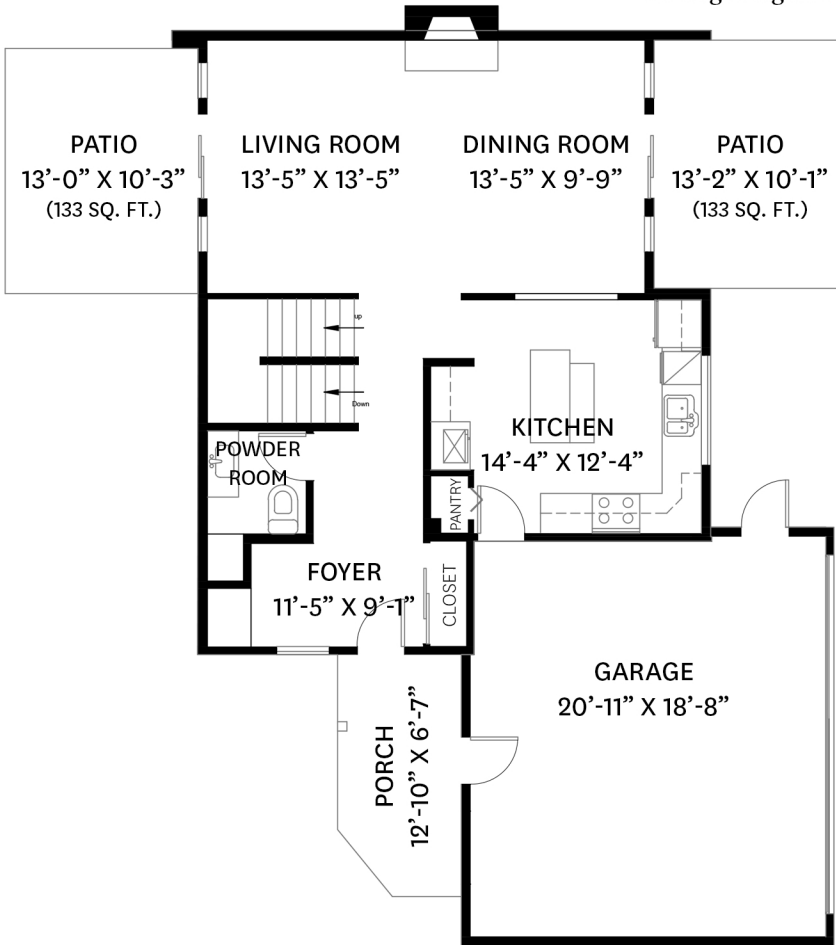
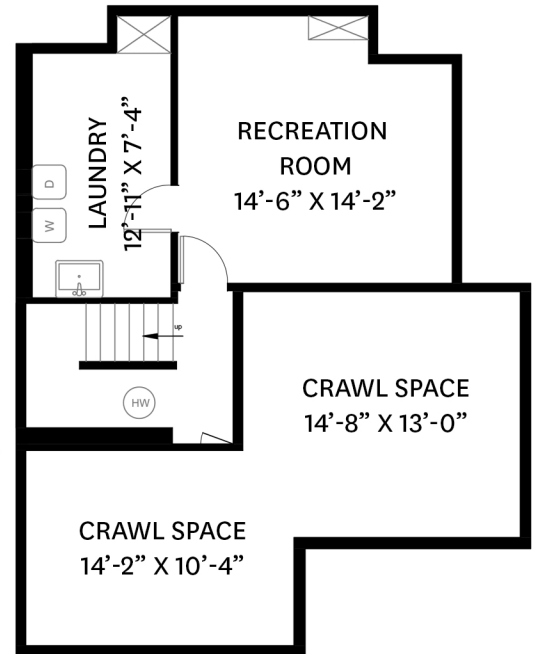
4 - 226 10TH STREET E, NORTH VANCOUVER, BC

LOWER FLOOR TOTAL: 417 SQ. FT.
 MAIN FLOOR TOTAL: 785 SQ. FT.
 UPPER FLOOR TOTAL: 791 SQ. FT.
TOTAL: 1,993 SQ. FT.

GARAGE: 425 SQ. FT.
PATIO: 266 SQ. FT.
PORCH: 80 SQ. FT.
CRAWL SPACE: 379 SQ. FT.

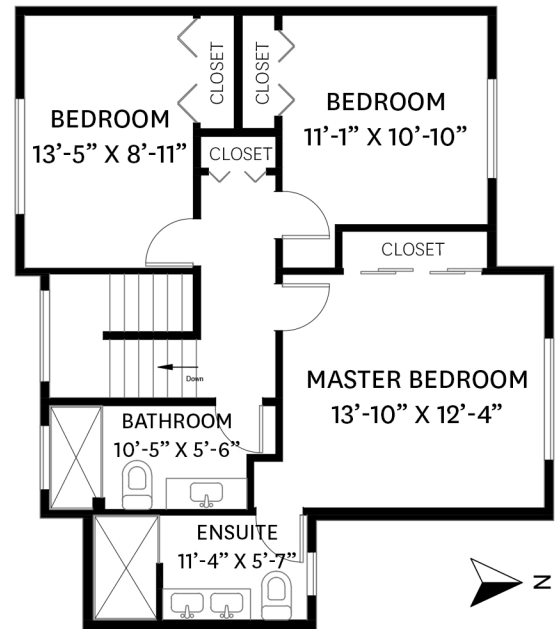
LOWER FLOOR PLAN

Ceiling Height: 7'-7" (Laundry)
 Ceiling Height: 7'-2" (Rec. Room)



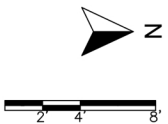
MAIN FLOOR PLAN

Ceiling Height: 8'-0"
 Ceiling Height: 8'-3" (Garage)



UPPER FLOOR PLAN

Ceiling Height: 8'-0"



WestCoast Realty™
 You've found a home

Marco Pontillo PREC*
 604.551.8986
 marco@marcopontillo.com

floor plan designed by
 ishot.ca Enterprises Inc.
 604-368-7979
 http://ishot.ca

*PERSONAL REAL ESTATE CORPORATION. THE FLOOR PLAN ILLUSTRATION IS NOT SUITABLE FOR CONSTRUCTION/ ARCHITECTURAL PURPOSES. MEASUREMENTS ARE APPROXIMATE AND MAY NOT BE TO SCALE. E&O INSURED.