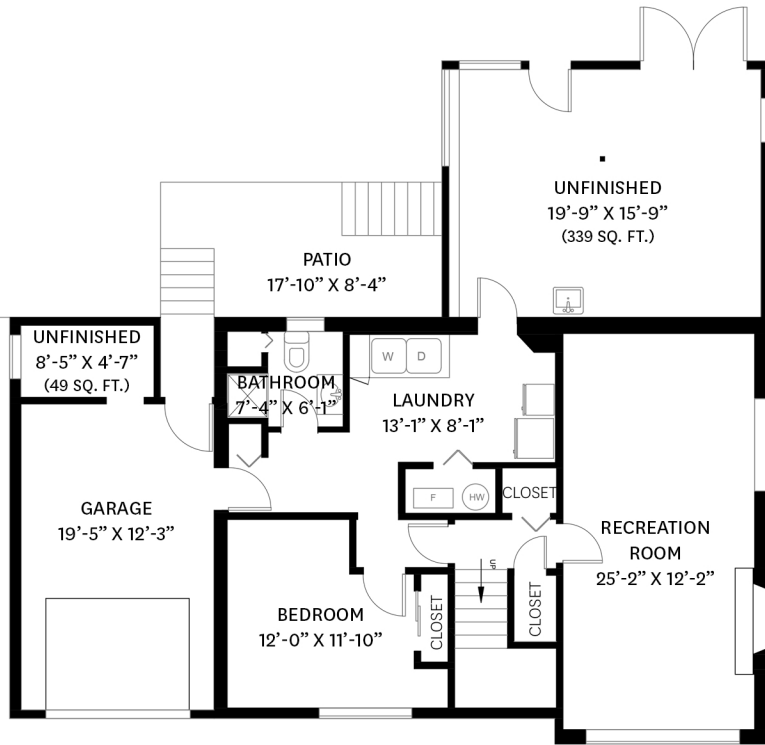


778 PLYMOUTH DRIVE, NORTH VANCOUVER, BC

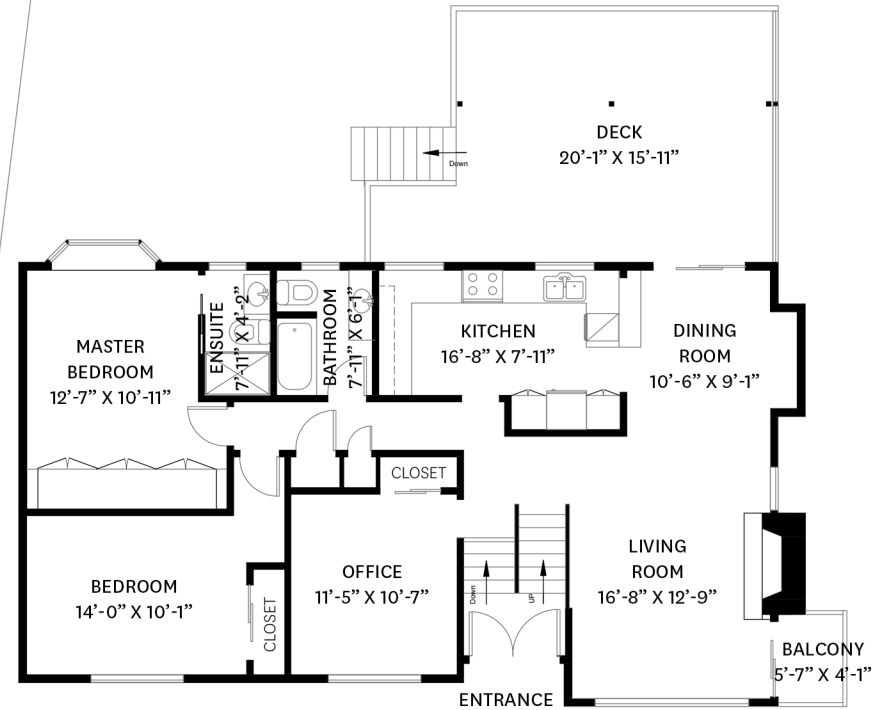
LOWER FLOOR TOTAL: 920 SQ. FT.
 MAIN FLOOR TOTAL: 1,300 SQ. FT.
 TOTAL: 2,220 SQ. FT.

UNFINISHED: 388 SQ. FT.
 GARAGE: 265 SQ. FT.
 PATIO: 117 SQ. FT.
 DECK: 347 SQ. FT.
 BALCONY: 23 SQ. FT.

BACK YARD



LOWER FLOOR PLAN
 Ceiling Height: 8'-0"



MAIN FLOOR PLAN
 Ceiling Height: 8'-0"



Marco Pontillo PREC*
 604.551.8986
 marco@marcopontillo.com

WestCoast Realty
 You've found a home

floor plan designed by
 ishot.ca Enterprises Inc.
 604-368-7979
 http://ishot.ca

*PERSONAL REAL ESTATE CORPORATION. THE FLOOR PLAN ILLUSTRATION IS NOT SUITABLE FOR CONSTRUCTION/ ARCHITECTURAL PURPOSES. MEASUREMENTS ARE APPROXIMATE AND MAY NOT BE TO SCALE. E&O INSURED.