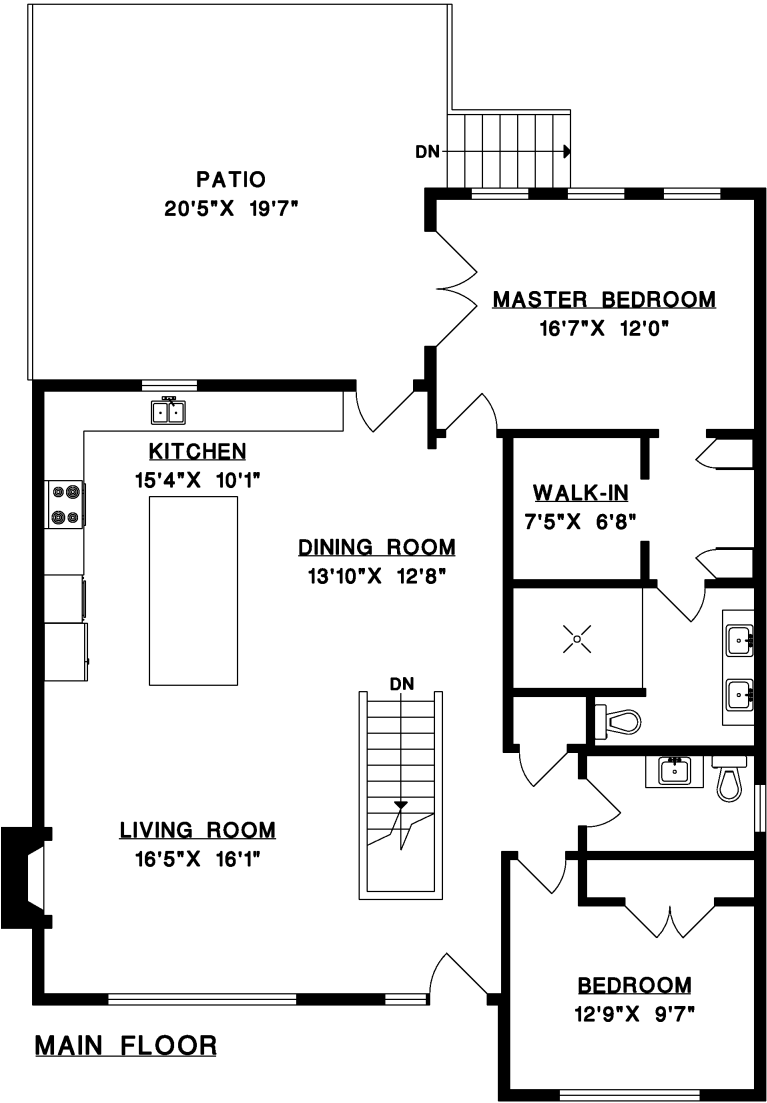
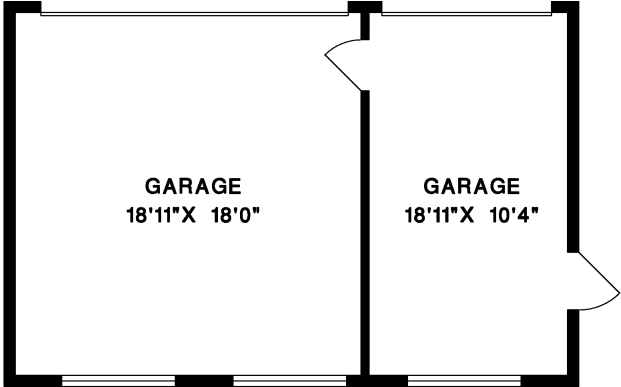
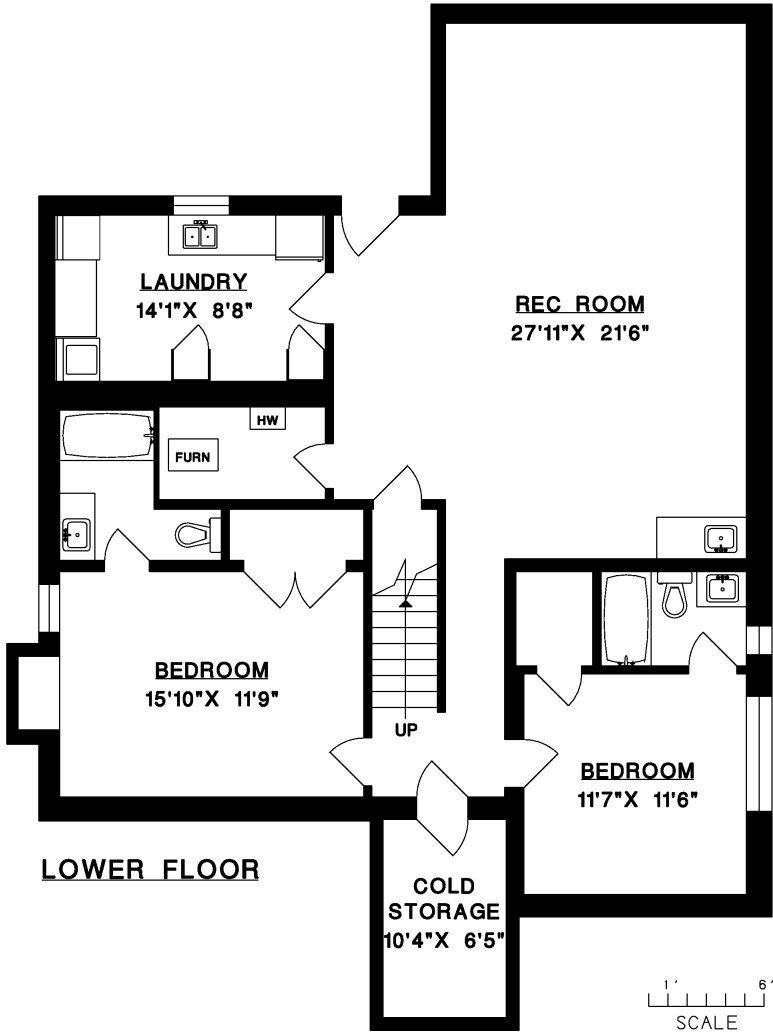


452 WEST 26TH STREET
NORTH VANCOUVER

MAIN FLOOR	1,491 SQ.FT.
LOWER FLOOR	1,499 SQ.FT.
TOTAL	2,990 SQ.FT.
COLD STORAGE	82 SQ.FT.
GARAGE	601 SQ.FT.
PATIO	416 SQ.FT.



MAIN FLOOR



LOWER FLOOR