



# 104 Glen Park Road

S T . C A T H A R I N E S , O N T A R I O

## Warm and Inviting

This solid brick home is located in a desirable north end Lakeport neighbourhood, set on a quiet, tree lined street close to schools, parks, the lake, amenities and major highways.













## Natural light Throughout

Lots of natural light can be found throughout the main level making this home a soothing retreat. The open concept living and dining room make a lovely addition to the floor plan, there are three bedrooms and a large 4 piece bath on the main level. The galley kitchen has a spot for a bistro nook, built in appliances and access to the lower level and dining room. The lower level has a finished recreation area, and has lots of space to develop, increasing the square footage of the living space!





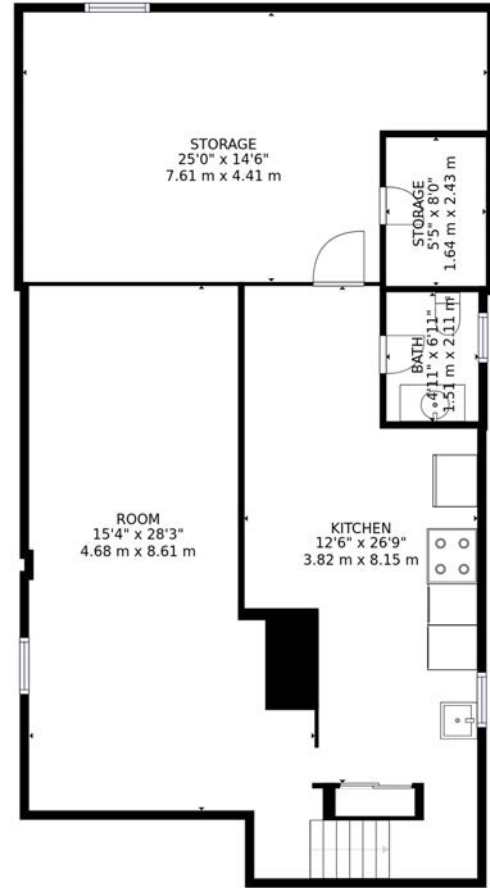


Flowing rooms, personalized spaces,  
and an abundance of natural light make  
this home a soothing retreat.





Celebrate Summer in this blooming backyard



# 104 Glen Park Road, St. Catharines

## FEATURES:

- Newer roof shingles
- New roof vents
- Gas fireplace
- Newer Carrier Infinity High Efficiency Furnace & Carrier Air Conditioning
- Enercare Humidifier
- Wood windows
- Fully fenced yard
- Covered patio
- Storage shed
- Mature trees and shrubs
- New broadloom in living room, dining room and bedroom
- Side door with entrance to basement
- Driveway parking for three cars
- Perennial Gardens and flowering shrubs
- Bathroom in lower level

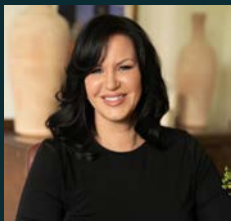
## RESTAURANTS:

- Valley Restaurant
- Hibachi Cafe
- The Yellow Pear Kitchen
- The Kolkata Club
- Blue Mermaid Seafood & Steak House
- Rise Above

## PARKS:

- Walker's Creek Park
- Guy Road Park
- Orchard Park
- Lakeview Park and Trail
- Spring Garden Park

Located between Vine street and Geneva Street Walking distance to: Guy road Park, Lakeview Park, Spring Gardens Park, schools including Governor Simcoe Secondary School, Dalewood French Immersion Public School and Price Philip Public School. Short drive to Sunset Beach, Waterfront trail, Municipal beach, George Nicholson Memorial Trail and Welland Canal. A short drive to Niagara Wine Country, Niagara on the Lake, and US Boarder.



**TAMMY PHINNEY**

Sales Representative  
Team Leader

[tammy@tammyphinney.com](mailto:tammy@tammyphinney.com)

905.634.7755

[phinneyteam.com](http://phinneyteam.com)



ROYAL LEPAGE BURLOAK REAL ESTATE SERVICES  
INDEPENDENTLY OWNED & OPERATED BROKERAGE

