



2070 Annette Court

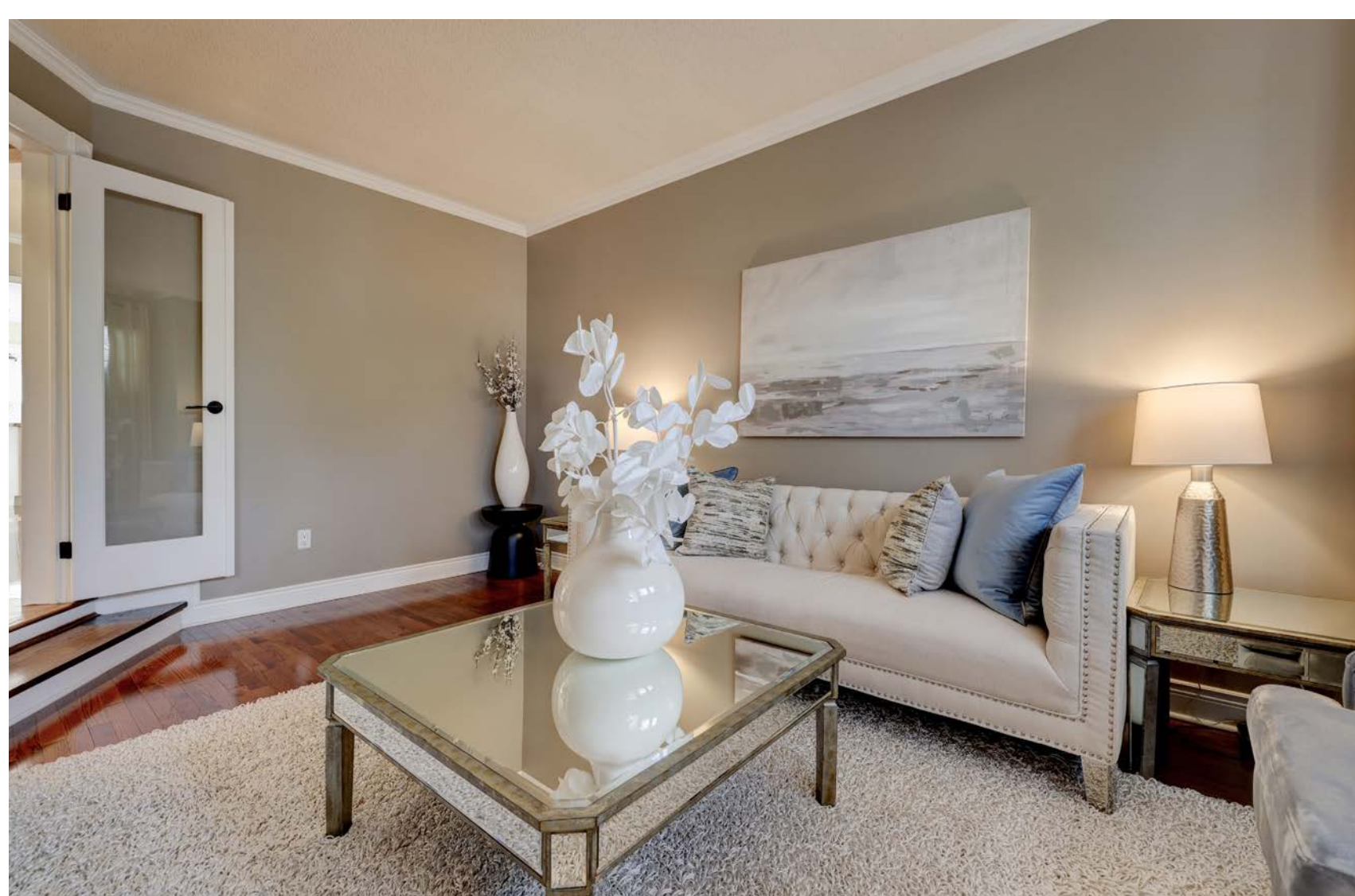
BURLINGTON, ONTARIO

Mature trees framing a pie shaped lot

Welcome to 2070 Annette Court! This family friendly home is situated on a private quiet court located in sought-after Millcroft neighbourhood, close to parks, schools, recreation centre and the Millcroft Golf Club. Premium lot that widens to 98 feet across the back of the property with a pool-sized yard and includes a large entertainment deck overlooking lush gardens.













Warm and inviting with lots of space to gather with family and friends

Spacious three plus two bedroom, three and a half bath home featuring over 3400 square feet of living space. Main level features sunken living room, separate dining room, eat-in kitchen with an abundance of windows overlooking the treed, fully fenced yard. Main level family room with gas fireplace, laundry and mud room with direct access to the garage and side yard. The home also features inside access to double car garage. Master features a walk-in closet, en suite with soaker tub and separate walk-in shower. The two additional bedrooms are generous in size. The fully finished basement features a recreation room with fireplace, fourth bedroom and additional fifth bedroom/den/office with en suite and three piece bath.





Generous sized primary bedroom overlooking gardens with a spa inspired en suite with a free standing tub and a walk-in closet.





Make this dream bathroom yours!







2070 ANNETTE COURT, BURLINGTON

Features:

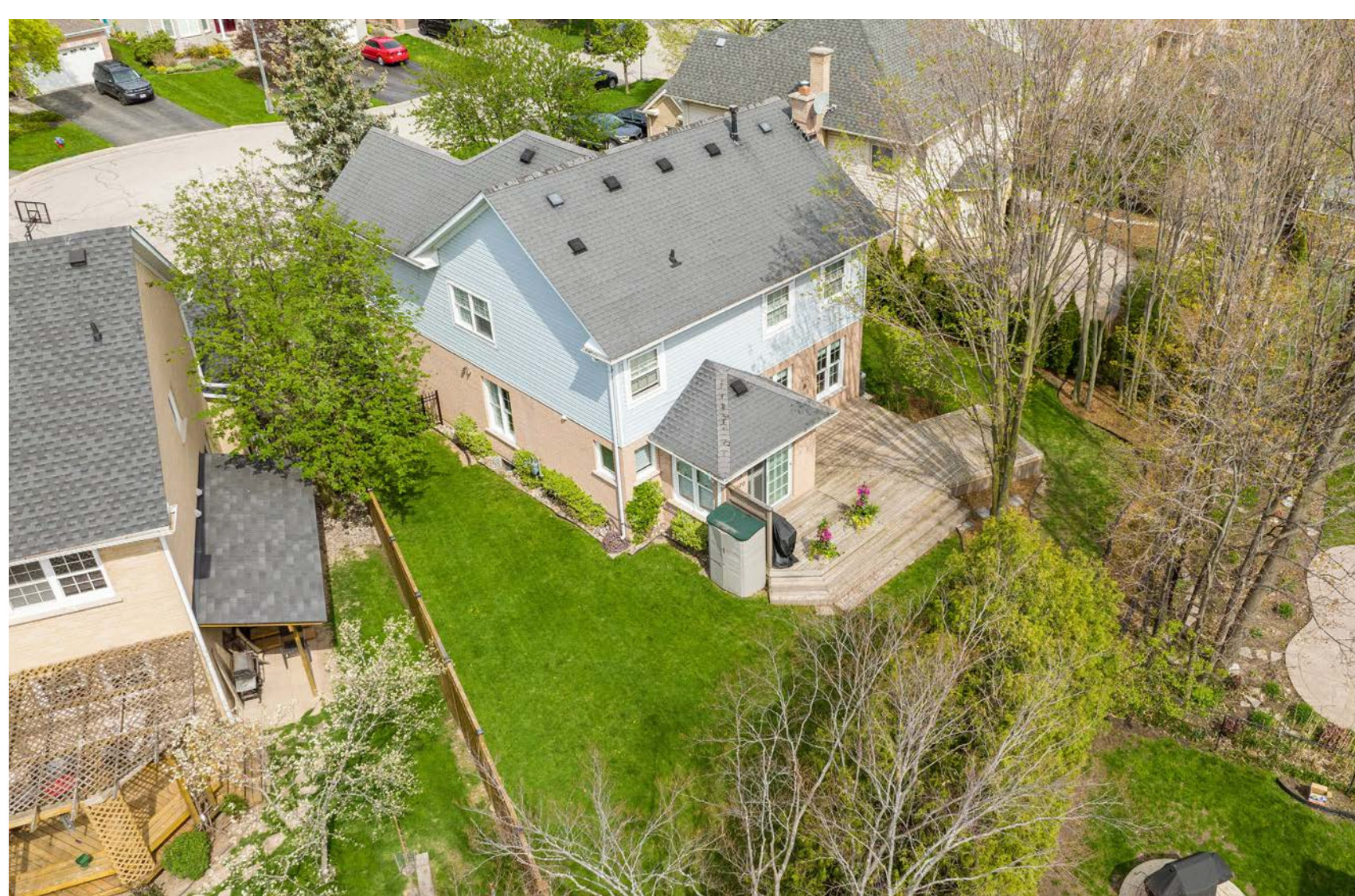
- Generous sized bedrooms
- Hardwood on main and second level
- Sunken living room with three large windows overlooking trees
- Separate dining room
- Kitchen has granite counter tops, breakfast bar and sun-filled breakfast area
- Large family room with custom mantel and gas fireplace
- Three full baths and main floor powder room
- Finished lower level with custom entertainment area with fireplace
- Potential of two extra bedrooms in lower level
- Driveway features parking for four cars
- Large mature trees
- Stone walkway leading to front door

RESTAURANTS AND SHOPPING:

- Rust Bistro
- Beertown Public House
- Ben Thanh
- Industria Pizzeria + Bar
- Uptown Social House
- Barra Fion
- Jacksons Landing
- Jake's Grill and Oyster House
- Kelseys
- The Keg
- Kelly's Bake Shop
- Burro
- Centro Garden Store

PARKS:

- Berwick Green Park
- Millcroft Park
- Newport Park
- Berton Park
- Taywood Park
- Tansley Woods Park
- Palmer Park









Fully fenced backyard with
Mature trees and lush gardens.
Ideal location close to schools,
parks, amenities, Millcroft Golf
Club and easy access to the
QEW/407.



PHINNEY

TEAM

tammy@tammyphinney.com

9 0 5 . 6 3 4 . 7 7 5 5

phinneyteam.com



2072 Lakeshore Road Burlington, ON L7R1E3

ALL measurements are approximate. Not intended to solicit
buyers/or sellers clients currently under contract.

