

DATA FOR:



BURLINGTON, ONTARIO

139 SECORD LANE

H4120676
ACTIVE

139 Secord Lane, Burlington

\$2,399,900
Sale

Listing Information

Type: **Detached**
 Style: **2 Storey**
 Region: **Halton**
 Municipality: **Burlington (33)**
 Neighbhd: **Shoreacres (331)**

Age: **6-15 Years**
 Ownrshp Type: **Freehold**
 Taxes/Year: **6,525.00 / 2021**

Fronting On: **South**
 Lot Frontage: **86.00 Feet**

Lot Depth: **90.17 Feet**
 Cross Street: **Lakeshore Road**

DOM: **0**
 Prop Type: **Residential**
 Sub Type: **Freehold**
 Rooms: **8**
 Bedrooms: **4 (3 + 1)**
 Bathrooms: **3 (2 + 1)**

2 pc Baths: **1**
 3 pc Baths: **0**
 4 pc Baths: **1**
 5+ pc Baths: **1**

Sq Ft / Src: **2,440 / 3rd Party Measuring Service**
 Lot Shape: **Rectangular**
 Lot Irregs:

Rooms

Room Name	Level	L/W/H Imperial	Room Features
Living Room	M	24'11" x 13'5"	Fireplace
Dining Room	M	13'4" x 7'2"	French doors
Kitchen	M	14'8" x 12'8"	Professionally Designed
Family Room	M	15'6" x 9'0"	Hardwood Floor
Mud Room	M	8'10" x 5'10"	2-Piece
Primary Bedroom	2	14'11" x 13'11"	5+ Piece
Bedroom	2	13'7" x 13'3"	4-Piece
Bedroom	2	21'4" x 12'7"	4-Piece
Den	2	11'7" x 10'4"	Balcony/Deck
Recreation Room	B	28'8" x 11'11"	Broadloom
Bedroom	B	15'0" x 8'11"	Broadloom
Office	B	13'4" x 10'9"	Broadloom
Storage Room	B	11'1" x 5'6"	
Utility	B	12'5" x 8'7"	
Bathroom	M		2-Piece
Bathroom	2		5+ Piece
Bathroom	2		4-Piece

Public Remarks

Imagine lazy summer nights on the front balcony, watching sailboats and kayaking on the lake! This fully renovated home is set against views of Lake Ontario, close to Paletta Estate, Discovery walk trails, & Shoreacres Creek. Located on a private lakeside street, having a right of way to access the water. This home has a spectacular custom kitchen, premium appliances and a large island with stone counters. The open concept main floor is perfect for entertaining, upstairs you'll find an office 3+ 1 bedrooms including a Principal Bedroom with a Ensuite bath featuring a separate shower and free standing tub and walk-in closet and the lower level is finished. The backyard is surrounded by trees and has a large flagstone patio, custom shed, and top-of-the-line hot tub with lots of privacy. The home has access to an easement to the Lake. Excellent school district, and easy commute to Toronto and Niagara.

Listing Brokerage [Royal LePage Burloak Real Estate Services, Brokerage](#)

TAMMY PHINNEY
 Sales Representative

tammy@tammyphinney.com
 905.634.7755



PHINNEY
 TEAM

ROYAL LEPAGE
 BURLOAK REAL ESTATE SERVICES
 INDEPENDENTLY OWNED & OPERATED BROKERAGE

2072 Lakeshore Road
 Burlington, ON L7R 1E3

All information contained herein has been supplied by the seller to the best of their knowledge and while deemed accurate is NOT guaranteed by Royal LePage Real Estate Services Ltd. Not intended to solicit buyers/sellers clients currently under contract.



139 Seccord Lane



Main Floor - 1150 Square Feet

Second Floor - 1290 Square Feet

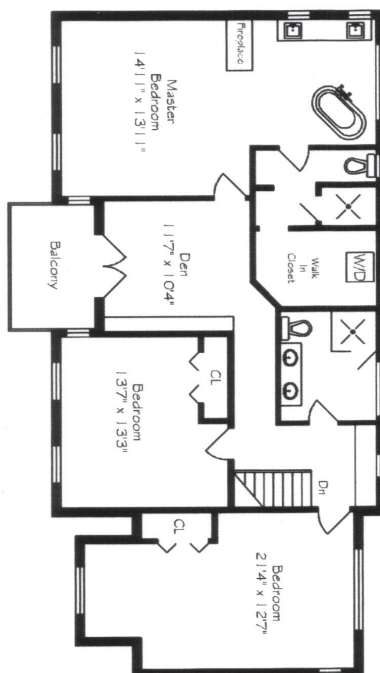
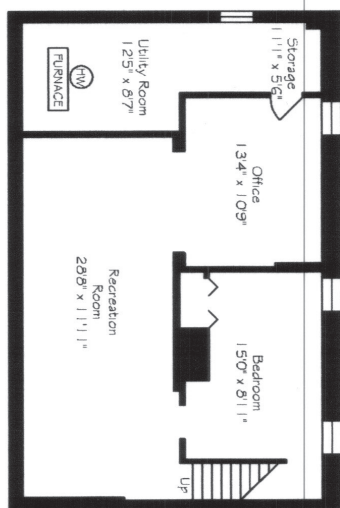
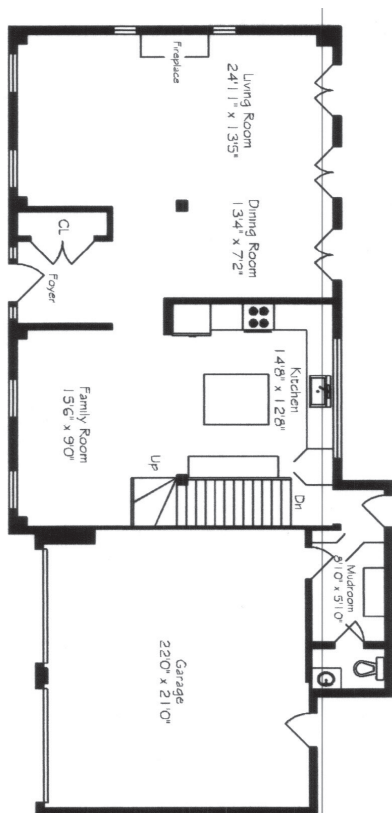
Lower Level - 1039 Square Feet

Total - 3479 Square Feet

Measurements and Calculations are approximate

To be used as guidelines only

www.measuredup.ca



TAMMY PHINNEY

Sales Representative
tammy@tammyphinney.com

905.634.7755



PHINNEY
TEAM

ROYAL LEPAGE
BURLOAK REAL ESTATE SERVICES
INDEPENDENTLY OWNED & OPERATED BROKERAGE

2072 Lakeshore Road
Burlington, ON L7R 1E3

All information contained herein has been supplied by the seller to the best of their knowledge and while deemed accurate is NOT guaranteed by Royal LePage Real Estate Services Ltd. Not intended to solicit buyers or sellers clients currently under contract.



BURLINGTON, ONTARIO

139 SECORD LANE



139 Secord Lane

Burlington, ON

HOODQ ADDRESS REPORT™

SCHOOLS

With excellent assigned and local public schools near this home, your kids will get a great education in the neighbourhood.



Nelson HS

Designated Catchment School
Grades 9 to 12
4181 New St

Pineland PS

Designated Catchment School
Grades 2 to 8
5121 Meadowhill Rd

Mohawk Gardens PS

Designated Catchment School
Grades PK to 6
5280 Spruce Ave

Frontenac PS

Designated Catchment School
Grades PK to 8
5140 Pinedale Ave

É Éléé Renaissance

Designated Catchment School
Grades PK to 6
1226 Lockhart Rd

ÉS Georges-P-Vanier

Designated Catchment School
Grades 7 to 12
100 Macklin St N

PARKS & REC.

This home is located in park heaven, with 4 parks and 7 recreation facilities within a 20 minute walk from this address.



Paletta Lakefront Park

4280 Lakeshore Road



Glen Afton Park

254 Glen Afton Drive



Breckon Park

4471 Spruce Avenue



FACILITIES WITHIN A 20 MINUTE WALK

3 Playgrounds
1 Trail

3 Ball Diamonds

TRANSIT

For convenient travel around the city, public transit is accessible from this home.



Nearest Rail Transit Stop

Appleby GO



Nearest Street Level Transit Stop

Lakeshore At Appleby



SAFETY

With safety facilities in the area, help is always close by. Facilities near this home include a fire station, a hospital, and a police station within 6.17km.



Joseph Brant Memorial Hospital

1245 North Shore Blvd E



Fire Station

455 Cumberland Avenue



Police Station

1160 North Shore Blvd E

CONVENIENCE

This home is located near everyday amenities to make your daily errands easier.



Coffee



Gym



Grocery



Gas Station



TAMMY PHINNEY

Sales Representative
tammy@tammyphinney.com

905.634.7755



PHINNEY
TEAM

ROYAL LEPAGE
BURLOAK REAL ESTATE SERVICES
INDEPENDENTLY OWNED & OPERATED BROKERAGE

2072 Lakeshore Road
Burlington, ON L7R 1E3

All information contained herein has been supplied by the seller to the best of their knowledge and while deemed accurate is NOT guaranteed by Royal LePage Real Estate Services Ltd. Not intended to solicit buyers/sellers clients currently under contract.