



sutton group
WestCoast Realty™

Jordan Michael
778-995-4103

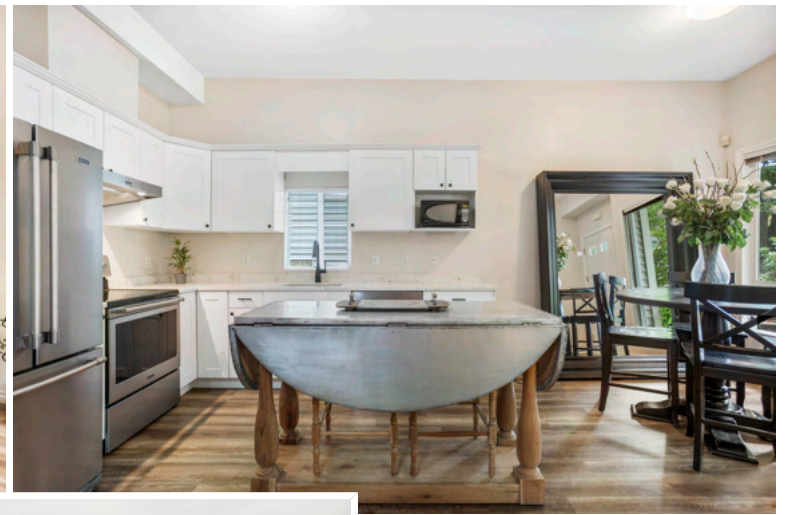
jordanmichael@sutton.com



8896 216 Street
Langley, BC

\$979,900

R2611284 | Beds: 4 | Baths: 3 | 1,534 sq ft | Year Built: 1999



Welcome to Hyland Creek! This beautiful 4 bed, 3 bath home offers an open floor plan and the ability to work from home! The main living area boasts plenty of natural light and a perfect place to relax with a gas fireplace & 10 ft ceilings. Kitchen includes luxurious SS Maytag appliances and a unique solid wood island with wicker stools! A separate cozy family room leads out to your own private patio! Upstairs, find a well-appointed master bedroom with ensuite, three other bedrooms, and a balcony overlooking the landscaped front yard. Hyland Creek features a fenced children's play area and a central location close to the new 216 Hwy 1 Interchange as well as Topham Elementary and Walnut Grove Secondary Schools. This home won't last long! Book your private showing Sat/Sun/Mon August 28 - 30 from 12 - 4pm.



R2611284 | Beds: 4 | Baths: 3 | 1,534 sq ft | Year Built: 1999

Sutton sutton group
WestCoast Realty™

Jordan Michael
778-995-4103
jordanmichael@sutton.com

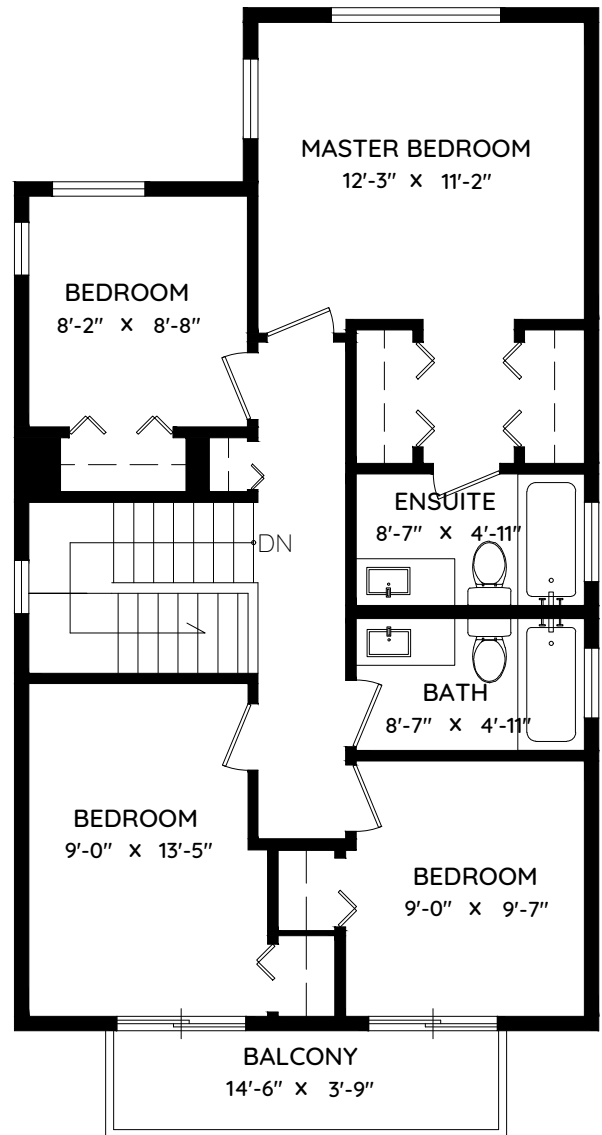
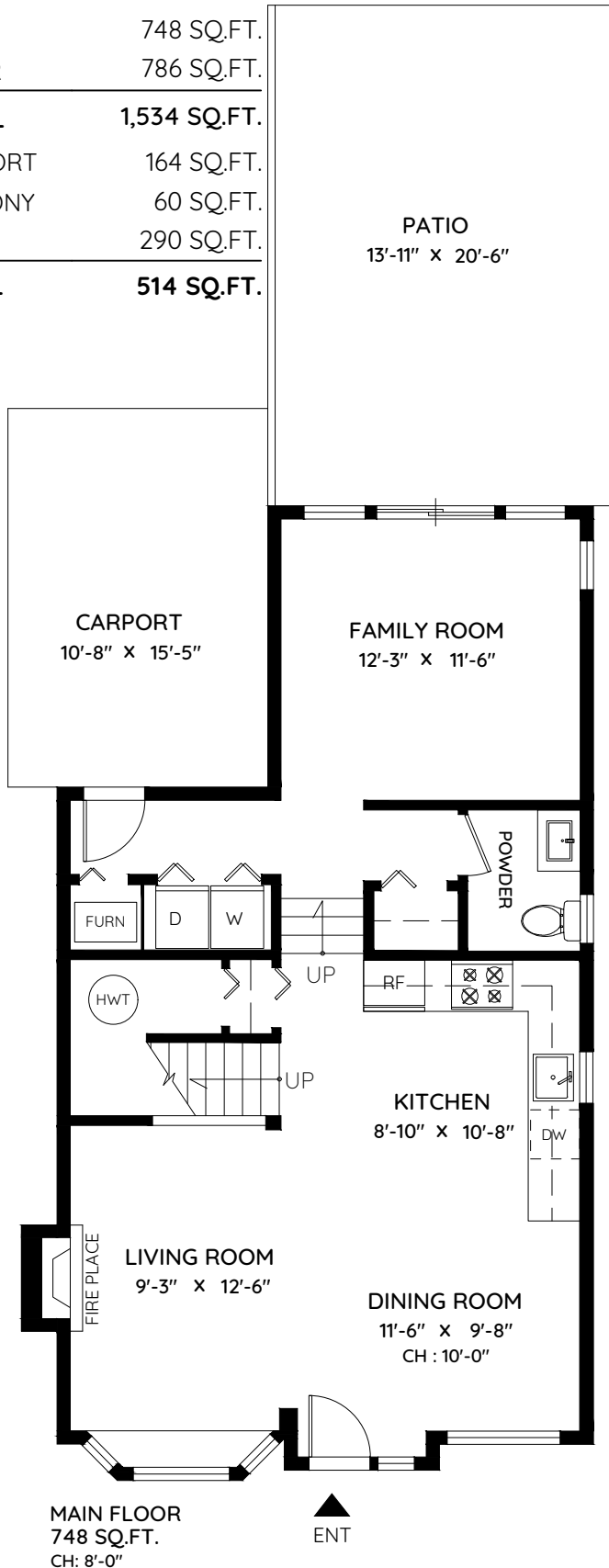
8896 216 STREET
LANGLEY, BC



JORDAN MICHAEL

jordanmichael@sutton.com • 778 995 4103
Sutton Group-West Coast Realty

MAIN	748 SQ.FT.
UPPER	786 SQ.FT.
TOTAL	1,534 SQ.FT.
CARPORT	164 SQ.FT.
BALCONY	60 SQ.FT.
PATIO	290 SQ.FT.
TOTAL	514 SQ.FT.



0 ft 3 ft 5 ft

The floor plan and the measurements are approximate and are to be used for advertising usage only.
Not suitable for architectural or construction. E&O Insured

