

FOR SALE

3007 - 4670 ASSEMBLY WAY, BURNABY, BC

 1 + den
 1
 1
 1
 663 sqft



OAKWYNREALTY



PROPERTY FEATURES

- 1 bedroom + 1 den condo with 68 sq. ft. outdoor balcony
- Stunning North-West views of the city and mountains
- Open concept kitchen and 9 ft high ceilings
- Interior: 663 sq. ft.
- Year built: 2018
- Rentals & Pets allowed
- Amenities: gym, yoga room, party room, outdoor lawn, playground, rooftop patio, 24/7 concierge, BBQ, bike room



LISTED AND MARKETED BY:

Cari Mai PREC*

604-727-9922

cari@carimai.com



C A R I M A I
PERSONAL REAL ESTATE CORPORATION



THE COMMUNITY - METROTOWN



School catchment

- Maywood Community School
- Burnaby South Secondary School



Transit, Community & Health Services

- Close to major bus routes & Metrotown Skytrain Station (1 min walk)
- Bonsor Recreation Complex
- Burnaby Public Library (across the street)



Parks

- Central Park - Pitch & Putt and Tennis Courts
- Maywood Park
- Burnaby Civic Square



Food & Shopping

- Restaurants, coffee shops, bars, grocery stores (PriceSmart Foods, Superstore, T&T)
- Metropolis at Metrotown Mall, Crystal Mall, Station Square (1 min walk)

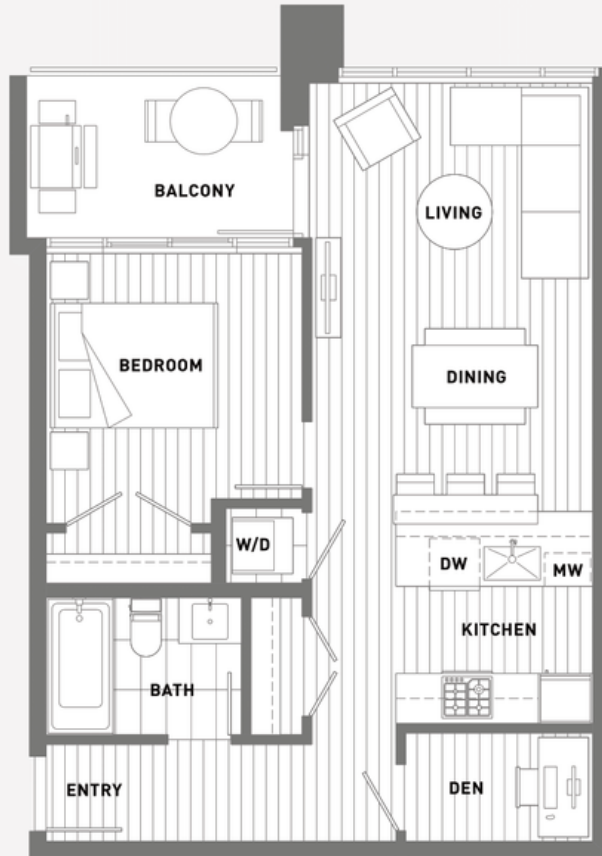
PLAN D

1 BEDROOM + DEN

4670

ASSEMBLY WAY

STATION
SQUARE



INTERIOR	663 SQ FT
EXTERIOR	68 SQ FT
TOTAL	731 SQ FT



The developer reserves the right to make changes and modifications to the information contained herein. Floor plans, layout and finishes are subject to change v
This is not an offering for sale as an offering can only be made after the filing of a disclosure statement, and only in jurisdictions where qualified in accordance with applical

FLOORPLAN LAYOUTS

CLIENT: Anthem Properties
PROJECT: Station Square Phase 2
TODAY'S DATE: March 10, 2014
SIZE: 8.5" X 11"



CARI MAI
PERSONAL REAL ESTATE CORPORATION



OAKWYNREALTY



OAKWYN REALTY



C A R I M A I
PERSONAL REAL ESTATE CORPORATION

cari@carimai.com | 604.727.9922 | www.carimai.com

