

The Snug Cafe, Bowen Island

Well established Bowen Island business offering breakfast, brunch, lunch & beverages. Located in the heart of Snug Cove and just steps from the ferry terminal and marinas. 'The Snug' is a local institution, a decades long meeting place that captures the soul of Bowen Island. Cozy indoor seating plus expansive patio seating adds to the ambience of this storied restaurant and gathering place. An excellent opportunity for a new owner to continue the success and legacy of this thriving restaurant in a sought after community and popular tourist destination.

\$386,000

Barry Thomas 604.803.0012

Personal Real Estate Corporation

E bt@livingbowen.com W www.livingbowen.com

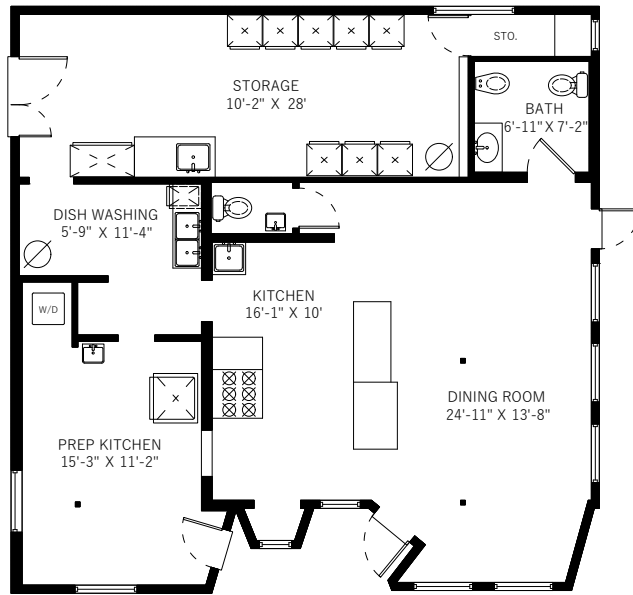
Macdonald
COMMERCIAL



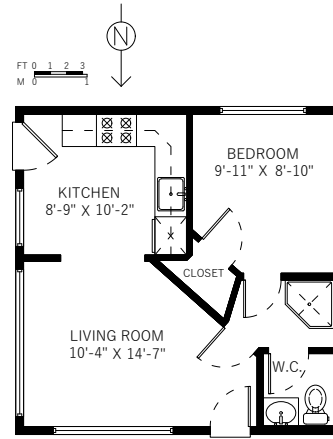
Macdonald Realty Ltd. This communication is not intended to cause or induce breach of an existing agency agreement.

443 BOWEN ISLAND TRUNK ROAD
Bowen Island, BC

Restaurant	1291 SQ.FT.
Suite	416 SQ.FT.
Total	1707 SQ.FT.



Restaurant: 1291 Sq.Ft.
Ceiling Height Max: 9'-11"



Suite: 416 Sq.Ft.
Ceiling Height: 7'-4"

Floor plan not suitable for architectural/construction purposes. ANSI Z765 standard used to calculate square footage. E&O Insured.
Measured July 2023 | Measured by Refine Visuals



For more information, please contact:

Barry Thomas 604.803.0012

Personal Real Estate Corporation

E bt@livingbowen.com W www.livingbowen.com



Although this information has been received from sources deemed reliable, we assume no responsibility for its accuracy, and without offering advice, make this submission to prior sale or lease, change in price or terms, and withdrawal without notice.