

604-803-0012 contact@barrythomas.realtor

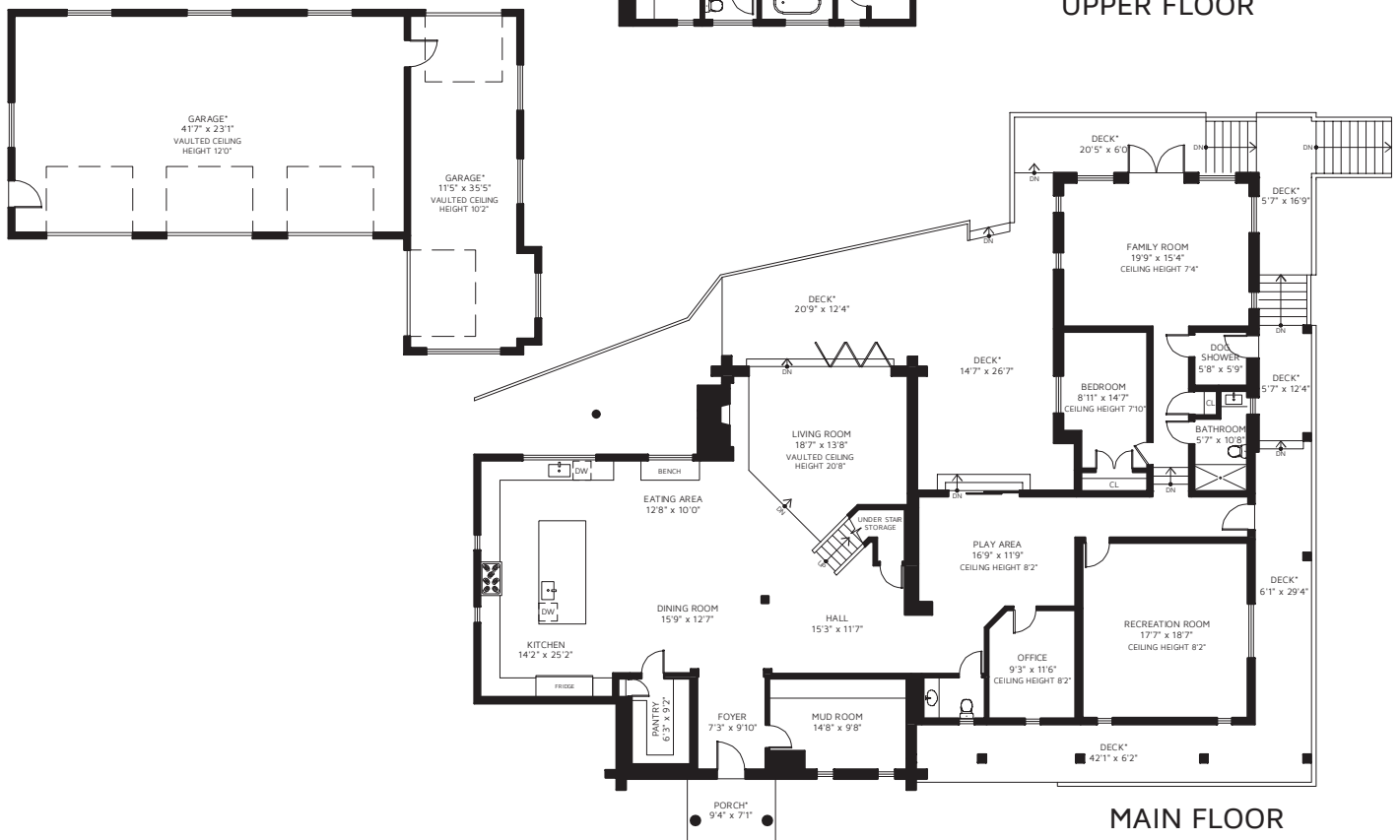
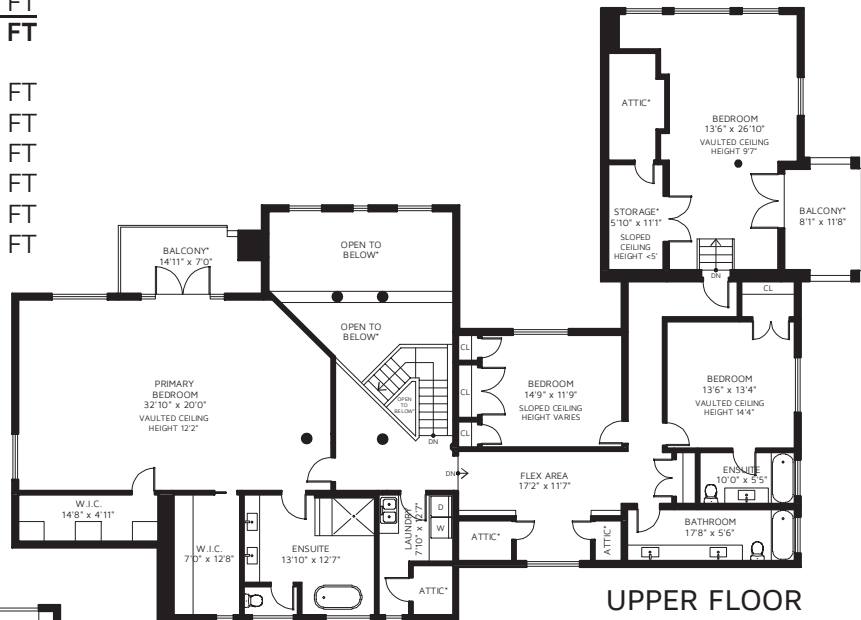
650 LAURA RD, BOWEN ISLAND, VON 1G2



UPPER FLOOR 2,731 SQ FT
 MAIN FLOOR 3,310 SQ FT
TOTAL FINISHED AREA 6,041 SQ FT

BALCONY* 99 SQ FT
 STORAGE* 75 SQ FT
 BALCONY* 102 SQ FT
 PORCH* 66 SQ FT
 DECK* 1,549 SQ FT
 GARAGE* 1,507 SQ FT

*NOT INCLUDED IN OVERALL SQUARE FOOTAGE



MEASURED ON JUNE 20, 2024. VALID FOR 1 YEAR