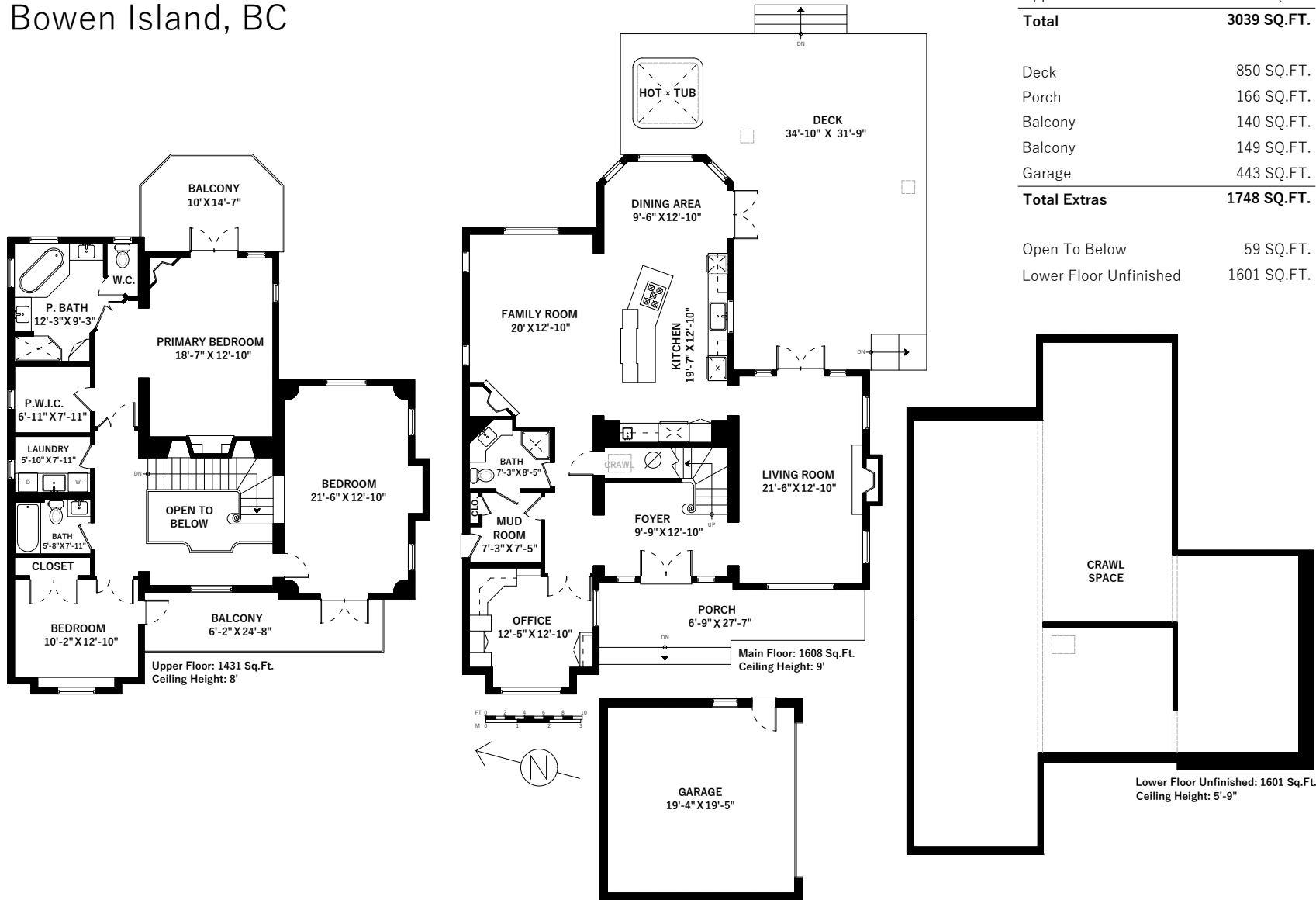


# 1240 Cowan Point

## Bowen Island, BC



Main Floor	1608 SQ.FT.
Upper Floor	1431 SQ.FT.
<b>Total</b>	<b>3039 SQ.FT.</b>

Deck	850 SQ.FT.
Porch	166 SQ.FT.
Balcony	140 SQ.FT.
Balcony	149 SQ.FT.
Garage	443 SQ.FT.
<b>Total Extras</b>	<b>1748 SQ.FT.</b>

Open To Below	59 SQ.FT.
Lower Floor Unfinished	1601 SQ.FT.