

FOR LEASE

5718 - 1A Street SW, Unit 115

PRESTIGE
COMMERCIAL GROUP

RE/MAX
COMMERCIAL®

Rethinking Commercial Real Estate



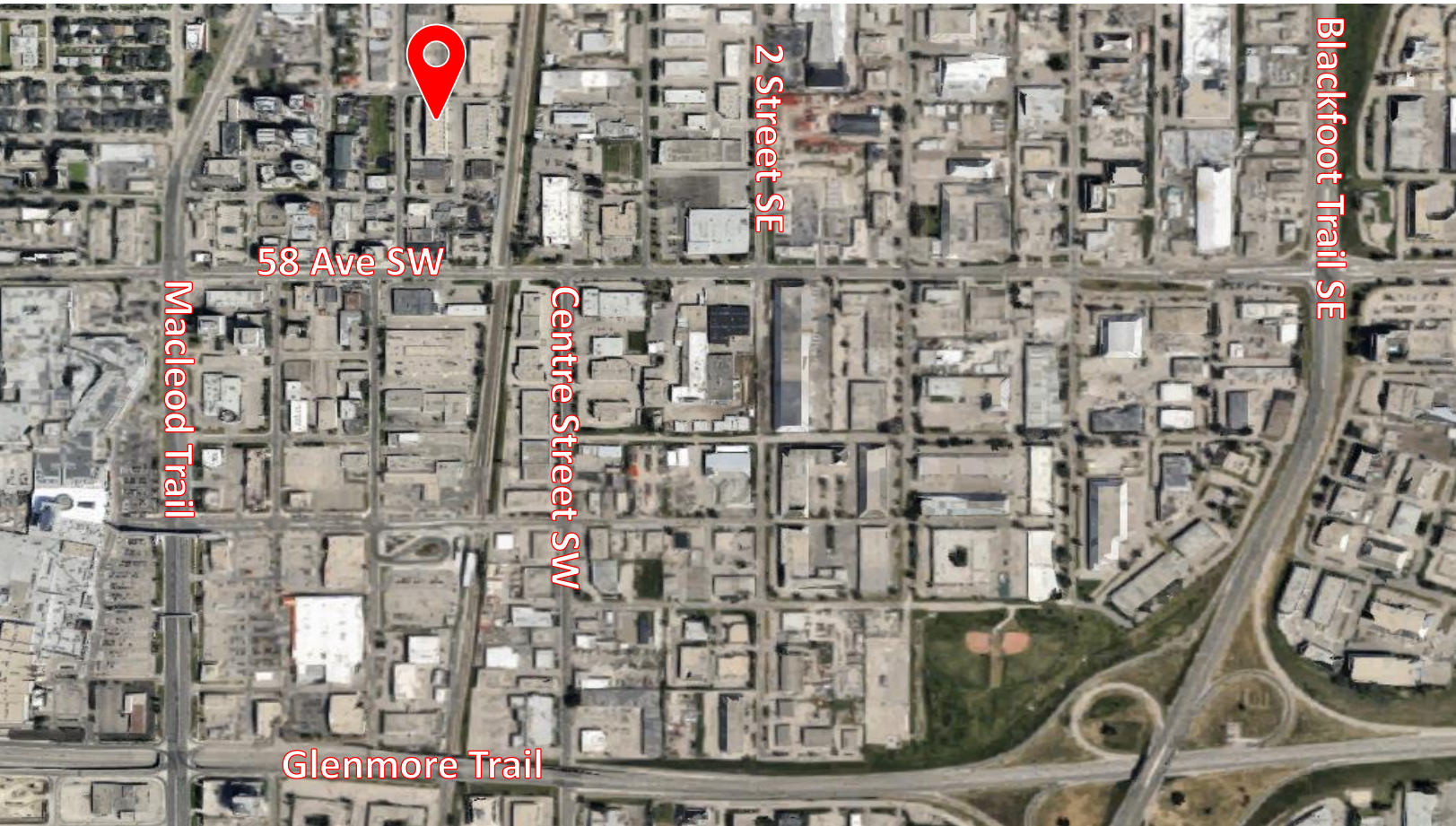
This brochure is intended for information purposes only and should not be relied upon for accurate factual information by the recipient hereof. The information contained herein is based on information which Prestige Commercial deems reliable. However, Prestige Commercial assumes no responsibility for the degree of accuracy such information, nor does Prestige commercial represent or warrant information contained herein. Recipient should conduct their own investigation to determine the accuracy of information contained herein. The information herein is subject to change without notice.

Kimberly Kimball, Senior Associate

403-701-0459

kimberly@kimballcommercialrealestate.com

5718 - 1A Street SW, Unit 115



Address: 5718 - 1A St SW, Units 115 & 116

Building Name: Manchester Industrial Park

Zoning: I-G (Industrial – General)

Subdivision: Manchester

1st Floor Size: 2,400± SqFt.

2nd Floor Size: 2,200± SqFt.

Total Size: 4,600± SqFt.

Asking Rent: \$26.00/SqFt (\$9,966.67/mth)

Op. Cost: \$8.55/SqFt (\$3,277.50/mth) ('24 est.)

Availability: July / August 2024

Term: 5 - 10 years

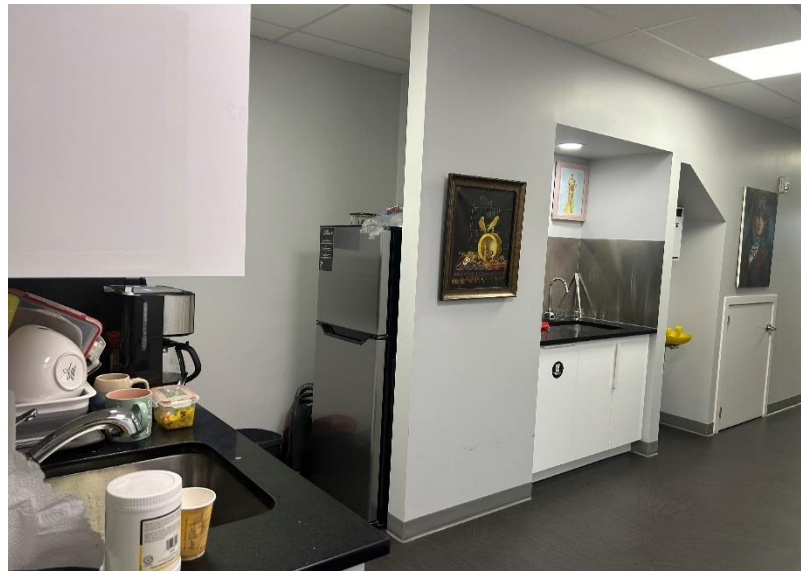
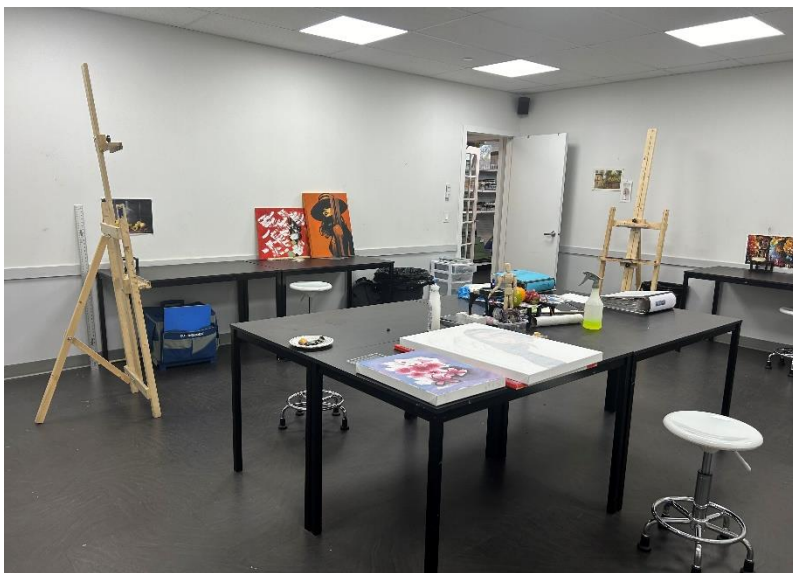
- Professionally managed building, currently approved for Office, Instructional, Retail and Entertainment use.
- The main floor consists of a showroom, 3 large classrooms, 1 bathroom, kitchen area, and storage with grade level loading door.
- There are 4 large classrooms, 1 office, 2 bathrooms, plus front & rear stairwells on the 2nd floor.
- High-quality improvements throughout and significant upgrades to the mechanical systems with additional makeup air unit. Seller has spent approx. \$550,000 in upgrades.
- City approved up to 60 people currently (tbv).
- Playground directly across the street.
- Parking includes a mix of assigned stalls, visitor stalls, and street parking.
- Centrally located with easy access to Macleod Trail and Blackfoot Trail.
- Close to Chinook Shopping Centre and LRT.

Kimberly Kimball, Senior Associate

403-701-0459

kimberly@kimballcommercialrealestate.com

5718 - 1A Street SW, Unit 115



Kimberly Kimball, Senior Associate
403-701-0459
kimberly@kimballcommercialrealestate.com

5718 - 1A Street SW, Unit 115



Kimberly Kimball, Senior Associate

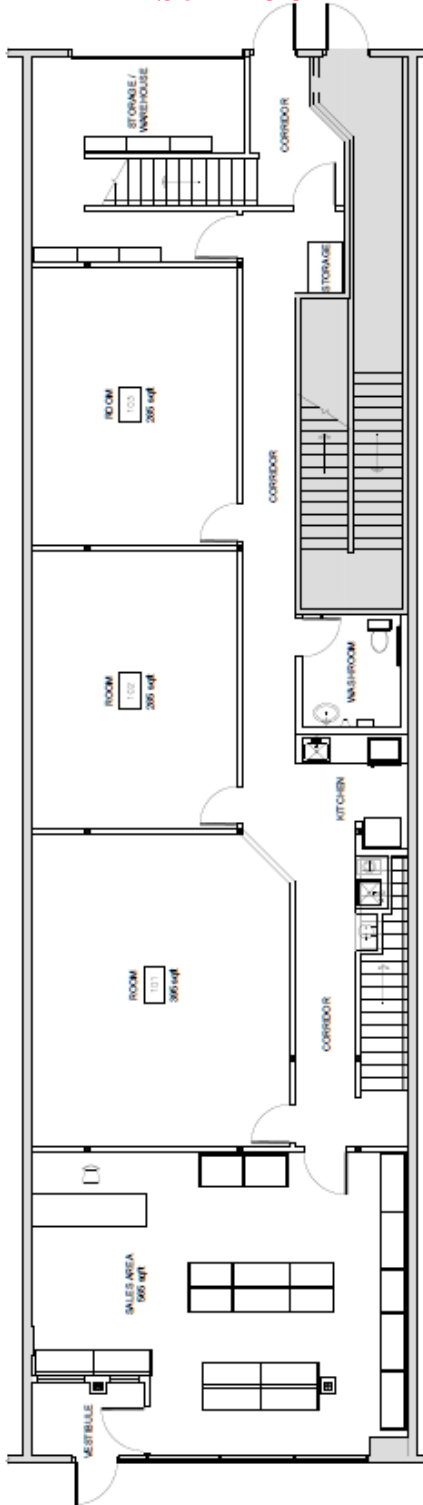
403-701-0459

kimberly@kimballcommercialrealestate.com

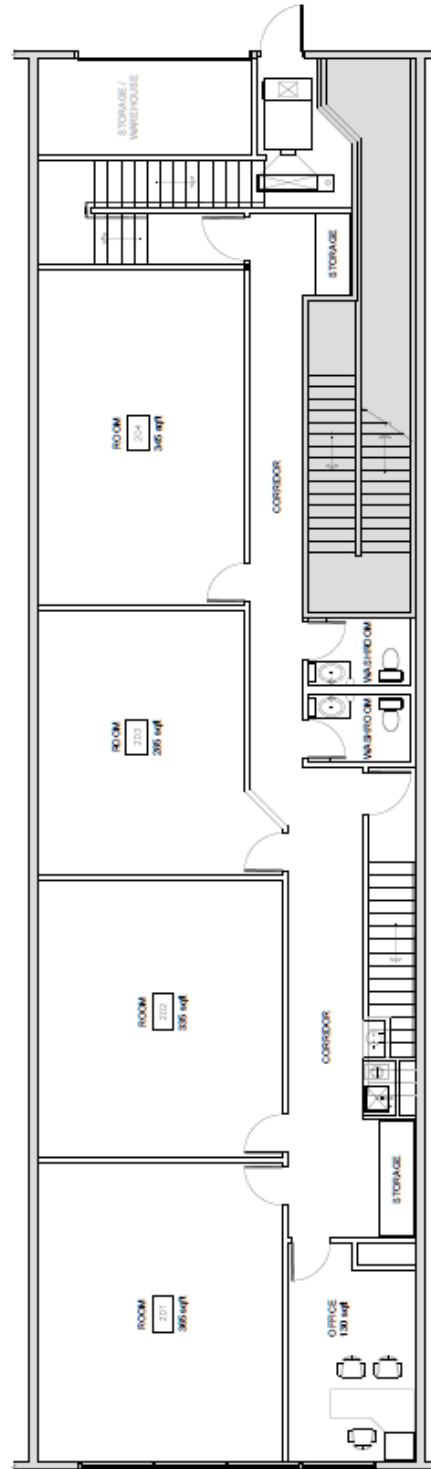
5718 - 1A Street SW, Unit 115

FLOOR PLAN

First Floor



Second Floor



Floor plans may not be exactly as illustrated and are subject to change.

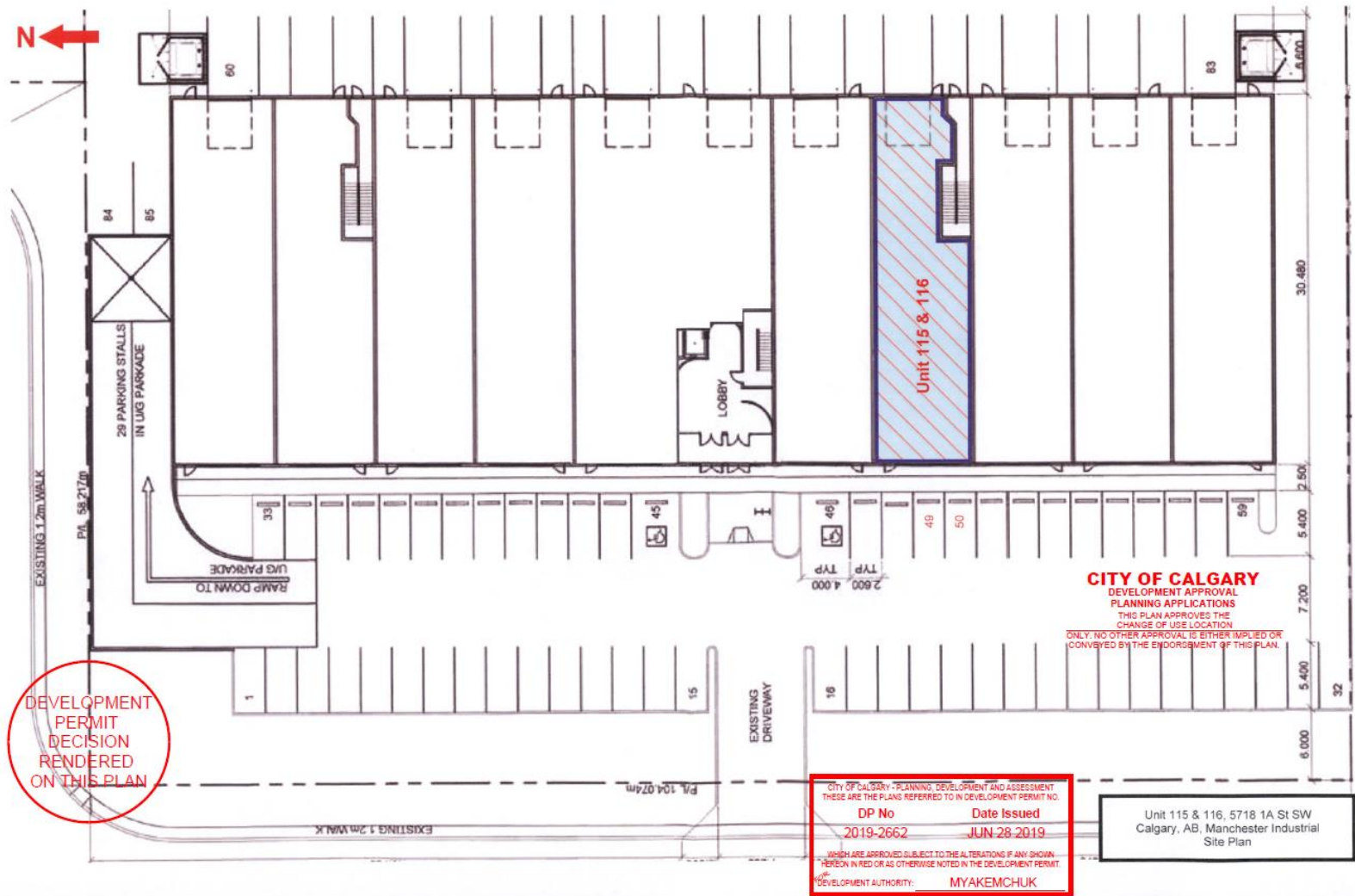
Kimberly Kimball, Senior Associate

403-701-0459

kimberly@kimballcommercialrealestate.com

5718 - 1A Street SW, Unit 115

Site Plan

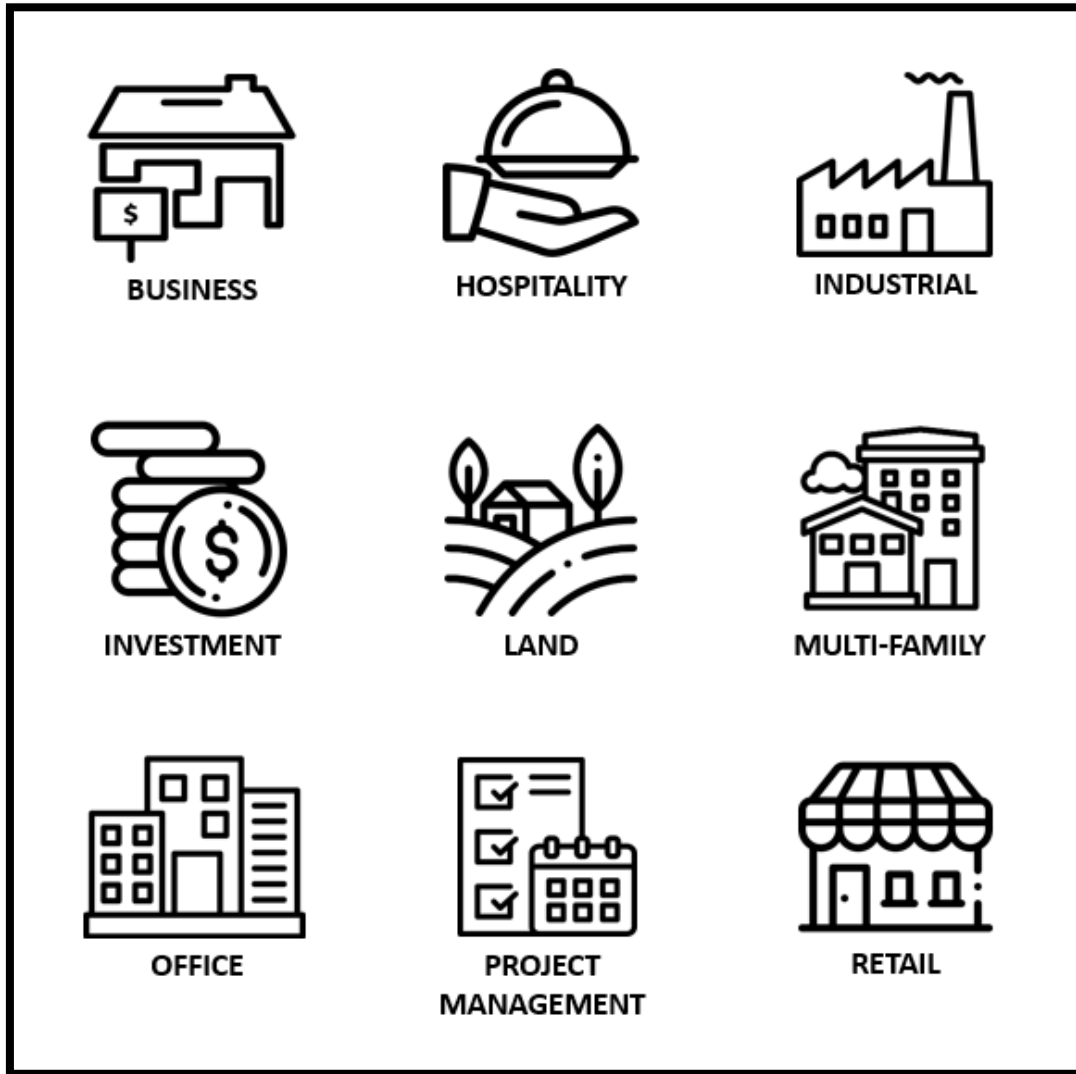


Site plan may not be exactly as illustrated and are subject to change.

Kimberly Kimball, Senior Associate

403-701-0459

kimberly@kimballcommercialrealestate.com



11450 – 29th Street SE, Unit 201, Calgary, Alberta T2Z 3V5

This brochure is intended for information purposes only and should not be relied upon for accurate factual information by the recipient hereof. The information contained herein is based on information which Prestige Commercial deems reliable. However, Prestige Commercial assumes no responsibility for the degree of accuracy such information, nor does Prestige Commercial represent or warrant information contained herein. Recipient should conduct their own investigation to determine the accuracy of information contained herein. The information herein is subject to change without notice.

Kimberly Kimball, Senior Associate

403-701-0459

kimberly@kimballcommercialrealestate.com