

Land for Sale



Rethinking Commercial Real Estate

403-204-9323



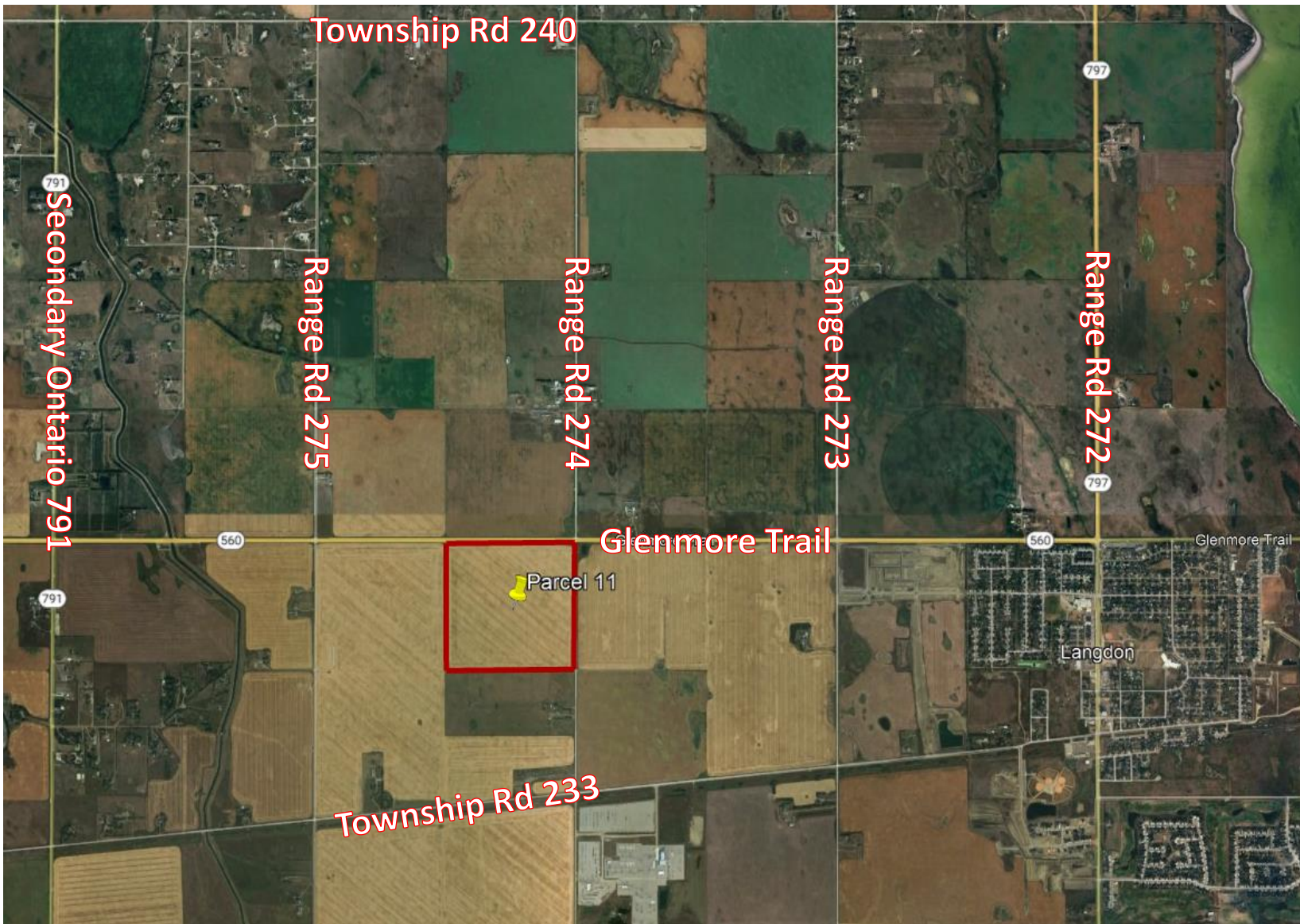
This brochure is intended for information purposes only and should not be relied upon for accurate factual information by the recipient hereof. The information contained herein is based on information which Prestige Commercial deems reliable. However, Prestige Commercial assumes no responsibility for the degree of accuracy such information, nor does Prestige Commercial represent or warrant information contained herein. Recipient should conduct their own investigation to determine the accuracy of information contained herein. The information herein is subject to change without notice.

Roger Ledene, Associate Broker

403-607-5811

roger@prestigecommercial.ca

Rocky View County, AB – 158.02 Acres



Address: Glenmore Trail and
Range Road 274, Rocky
View County, AB

Zoning: Agricultural (A-GEN)

Total Size: 158.02± Acres

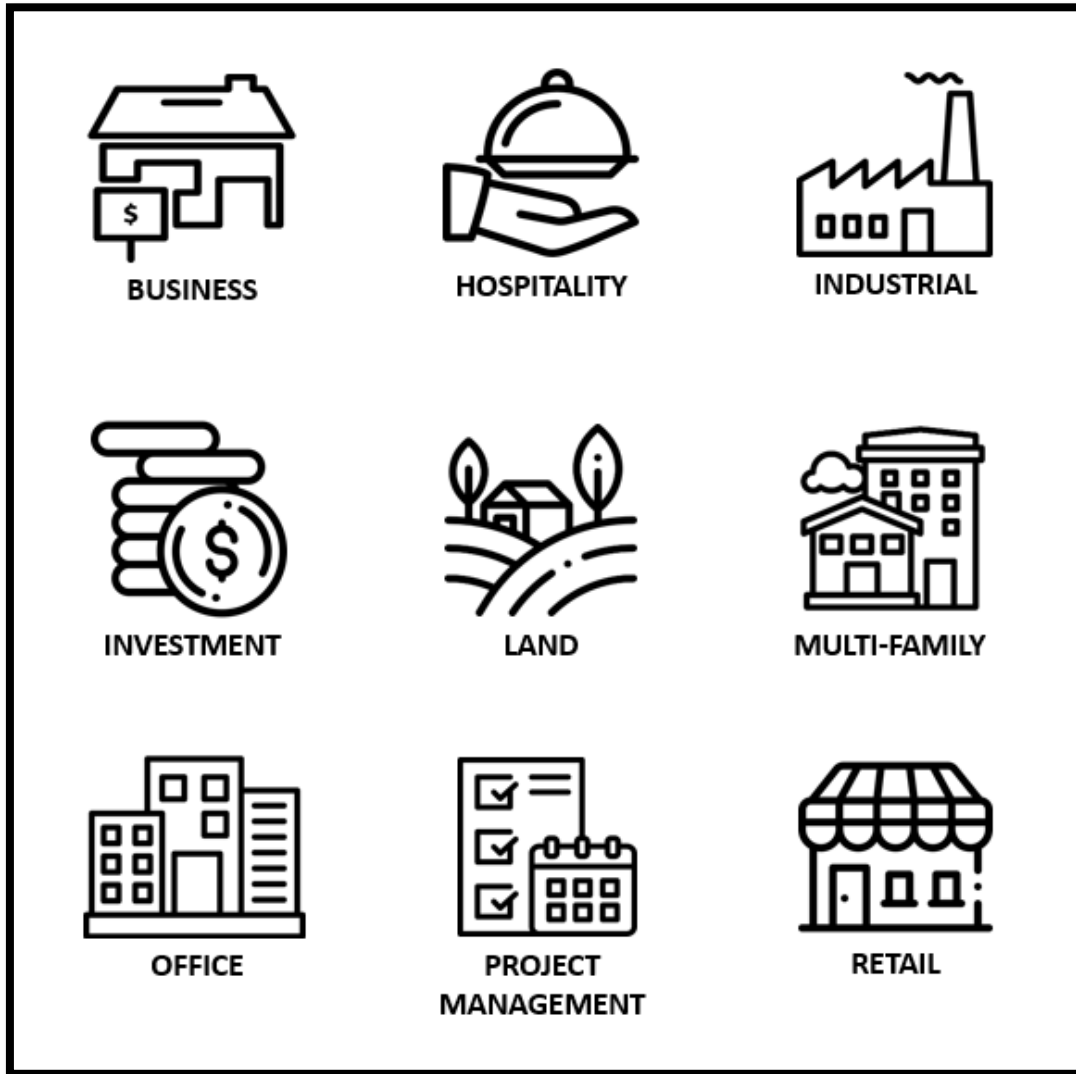
Asking Price: \$9,700,000
\$61,000/Acre approx.

- Situated in Chestermere, at the intersection of Range Road 274 and Glenmore Trail, this 158-acre land parcel is currently zoned as Agricultural, offering a multitude of potential uses and promising development opportunities.
- Located near East Rockyview Wastewater Transmission main line.

Roger Ledene, Associate Broker

403-607-5811

roger@prestigecommercial.ca



**11450 – 29th Street SE, Unit 201
Calgary, Alberta T2Z 3V5**

This brochure is intended for information purposes only and should not be relied upon for accurate factual information by the recipient hereof. The information contained herein is based on information which Prestige Commercial deems reliable. However, Prestige Commercial assumes no responsibility for the degree of accuracy such information, nor does Prestige Commercial represent or warrant information contained herein. Recipient should conduct their own investigation to determine the accuracy of information contained herein. The information herein is subject to change without notice.

Roger Ledene, Associate Broker

403-607-5811

roger@prestigecommercial.ca