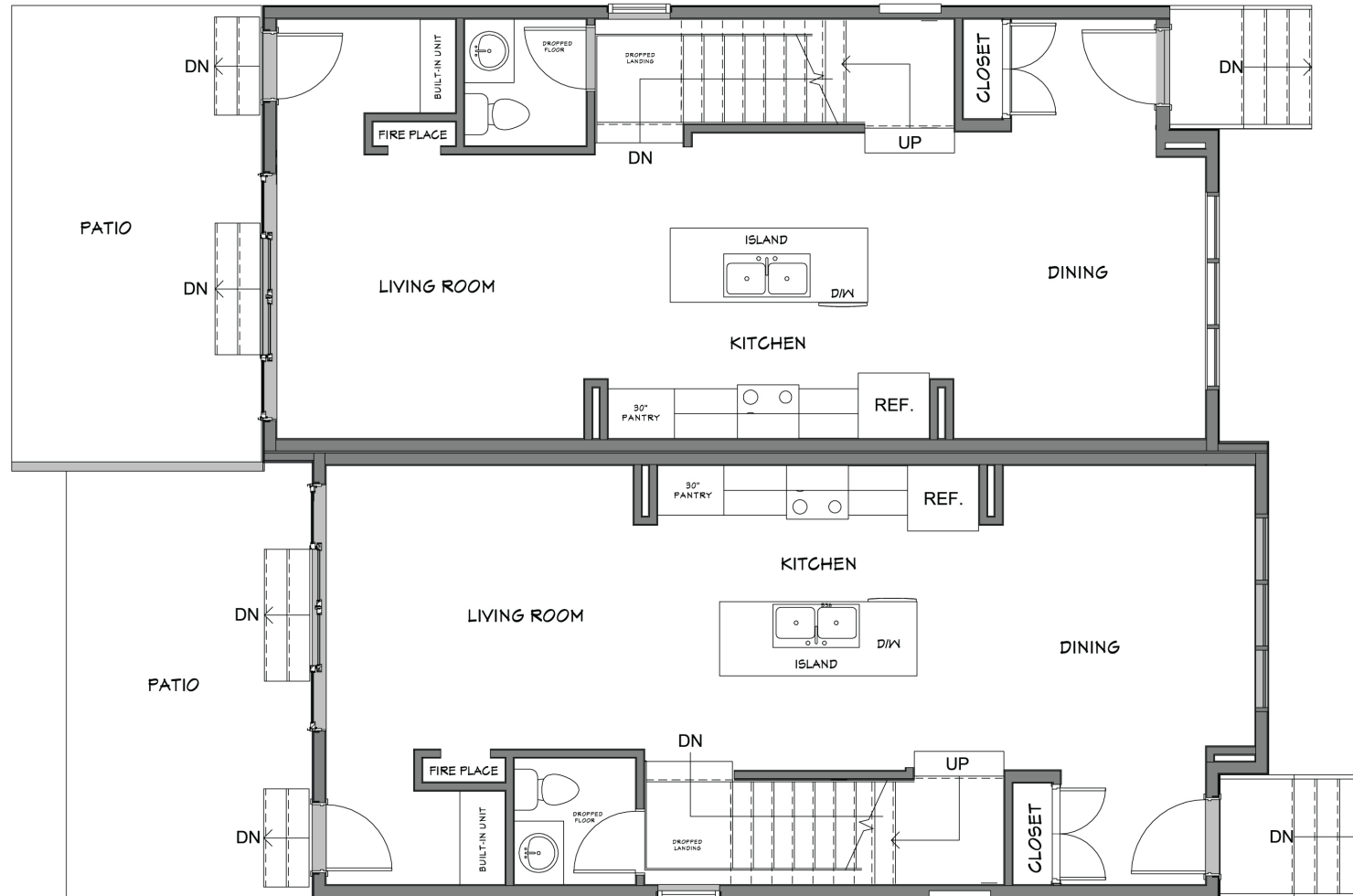


410 6A STREET NE (TWO UNITS AVAILABLE) | MAIN FLOOR



403.800.3252 | URBANUPGRADE & NEWINFILLS

NEWINFILLS.CA

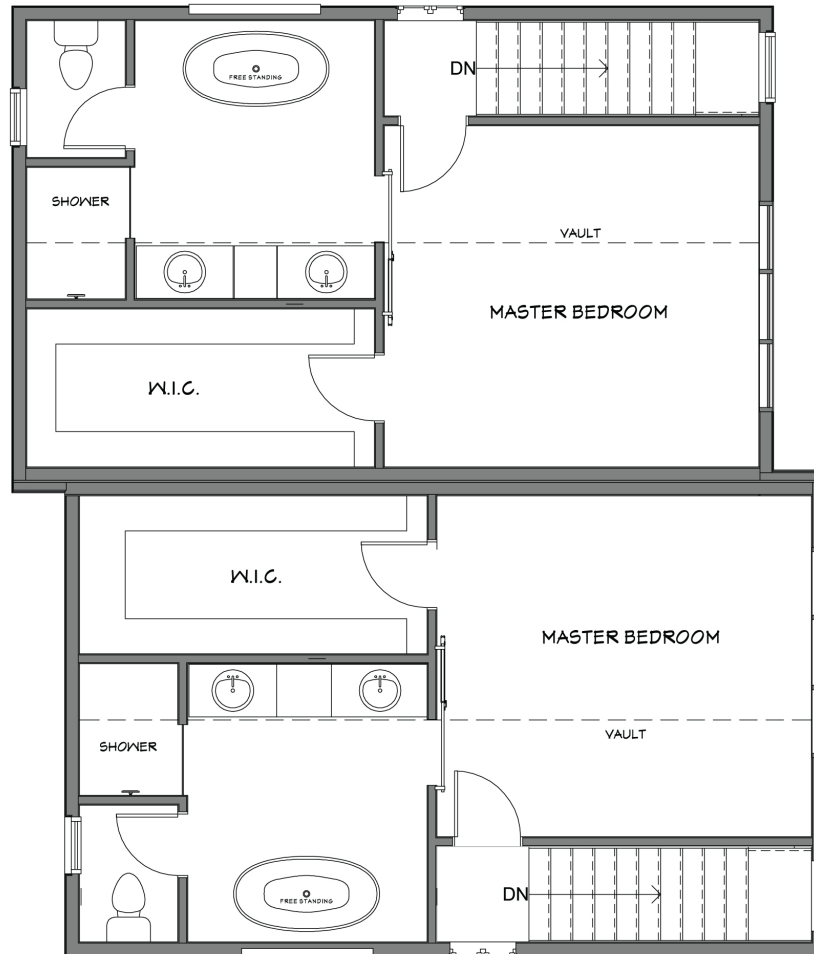
410 6A STREET NE (TWO UNITS AVAILABLE) | SECOND FLOOR



403.800.3252 | URBANUPGRADE & NEWINFILLS

Disclaimer: White regions are excluded from total floor area. All room dimensions and floor areas must be considered approximate and should not be relied upon without independent verification.

410 6A STREET NE (TWO UNITS AVAILABLE) | THIRD FLOOR



403.800.3252 | **URBANUPGRADE & NEWINFILLS**

NEWINFILLS.CA

410 6A STREET NE (TWO UNITS AVAILABLE) | LOWER FLOOR



403.800.3252 | **URBANUPGRADE & NEWINFILLS**

Disclaimer: White regions are excluded from total floor area. All room dimensions and floor areas must be considered approximate and should not be relied upon without independent verification.