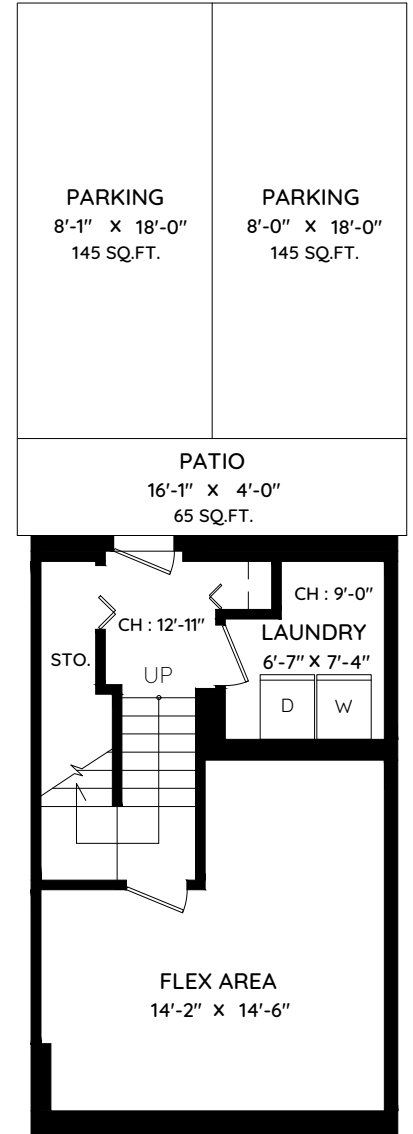
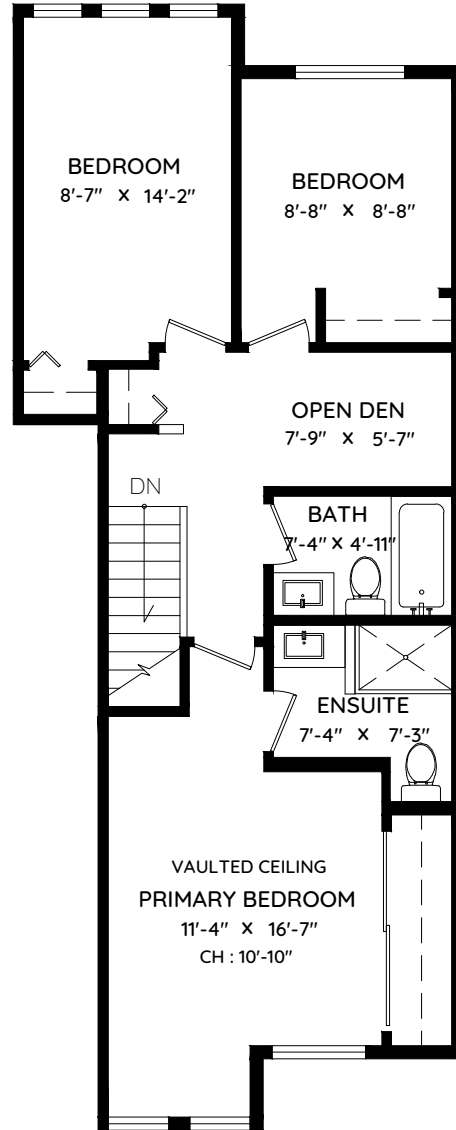
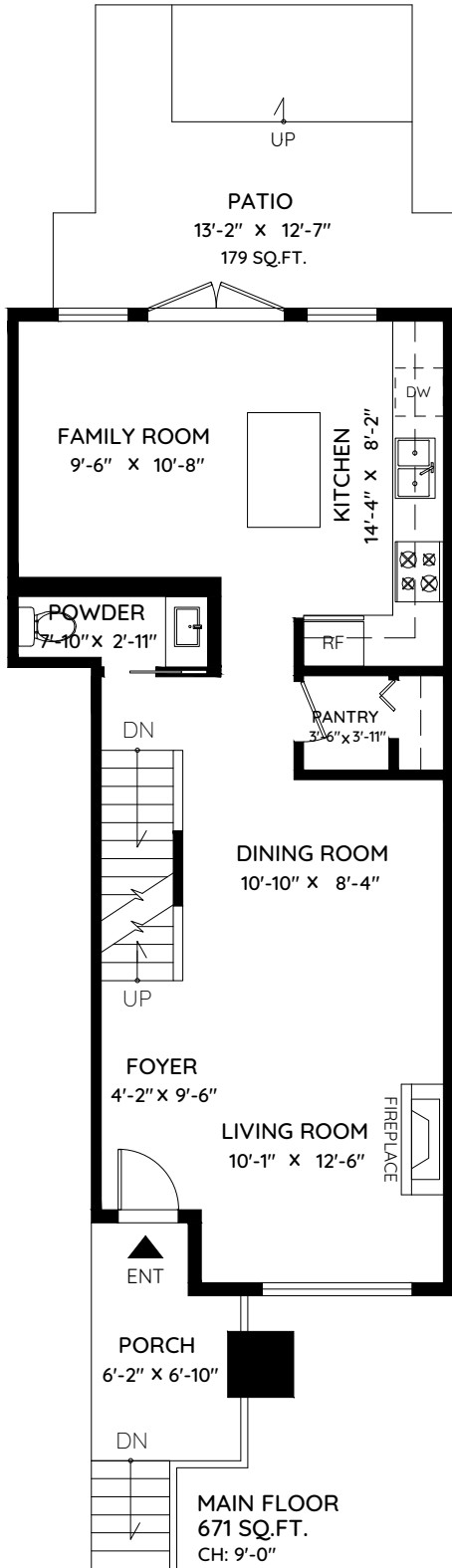


311 - 15TH STREET EAST

NORTH VANCOUVER, BC

MAIN	671 SQ.FT.	PARKING	290 SQ.FT.
UPPER	729 SQ.FT.	PORCH	74 SQ.FT.
LOWER	381 SQ.FT.	PATIO	244 SQ.FT.
TOTAL	1,781 SQ.FT.	TOTAL	608 SQ.FT.



0 ft 3 ft 5 ft



The floor plan and the measurements are approximate within +/- 2% and are to be used for advertising usage only. May include unfinished area. Not suitable for architectural or construction. E&O Insured