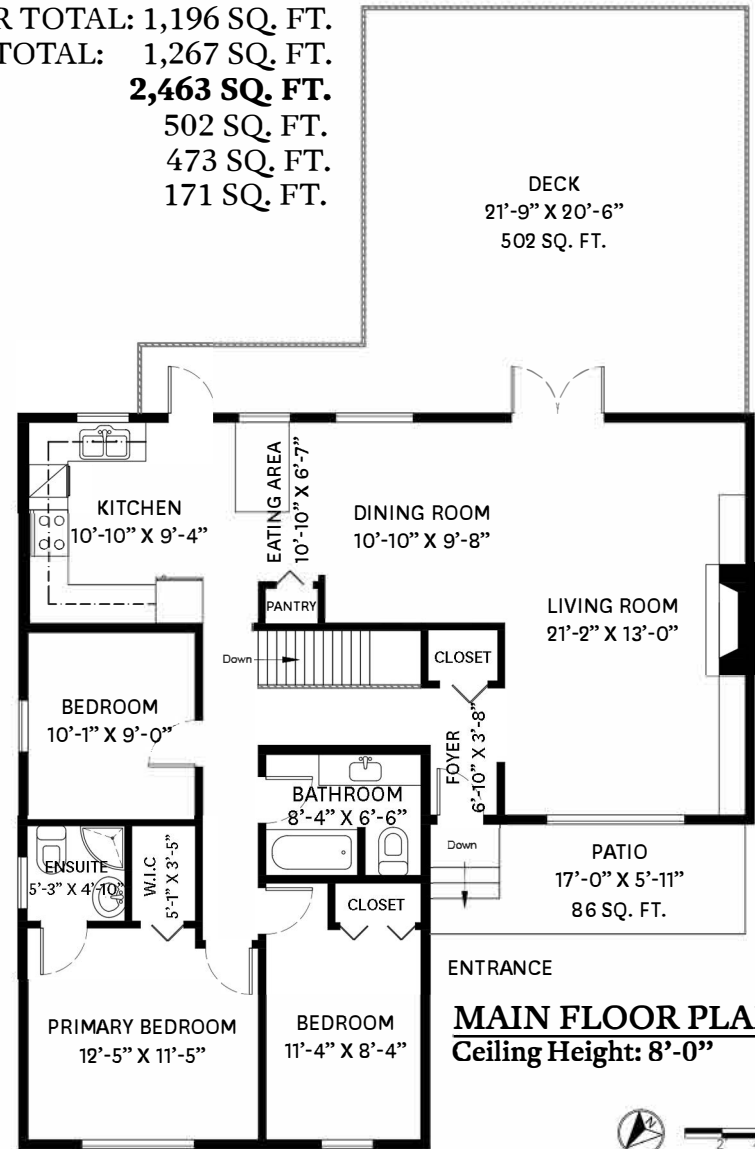
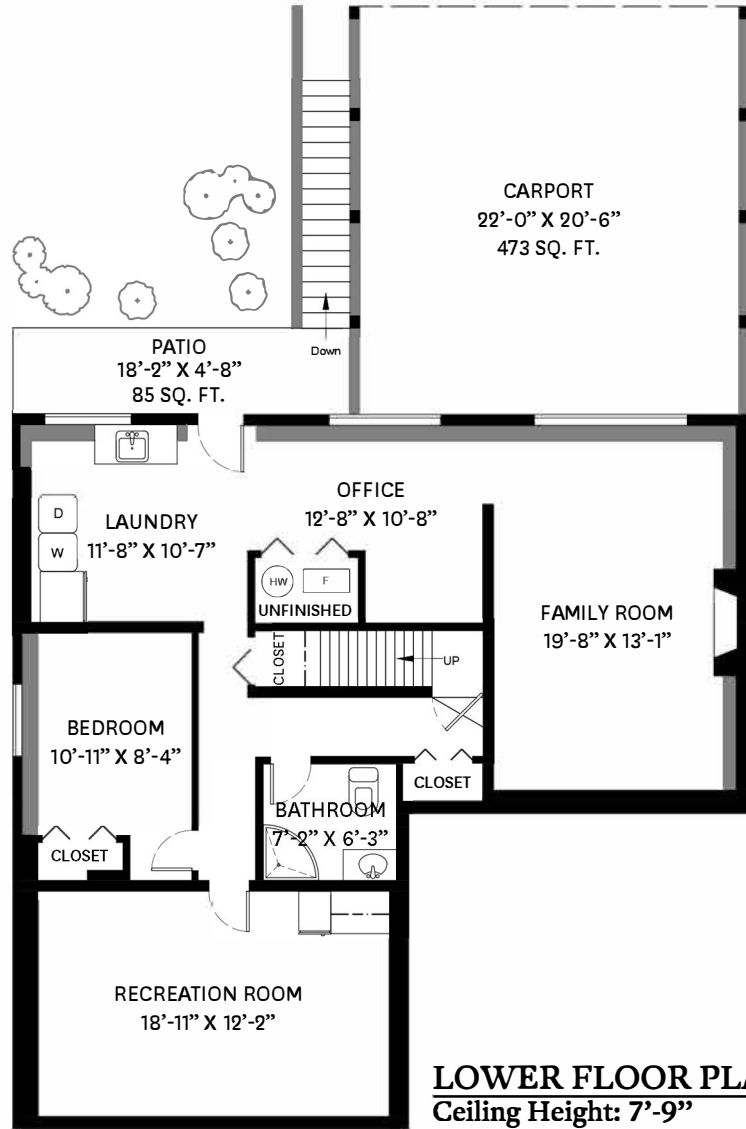


1107 SHAVINGTON STREET, NORTH VANCOUVER, BC

LOWER FLOOR TOTAL: 1,196 SQ. FT.
 MAIN FLOOR TOTAL: 1,267 SQ. FT.
TOTAL: 2,463 SQ. FT.
 DECK: 502 SQ. FT.
 CARPORT: 473 SQ. FT.
 PATIO TOTAL: 171 SQ. FT.



stilhavn
REAL ESTATE SERVICES

The Den
Real Estate Group

floor plan designed by
 ishot.ca Enterprises Inc.
 604-368-7979
 http://ishot.ca

*PERSONAL REAL ESTATE CORPORATION. THE FLOOR PLAN ILLUSTRATION IS NOT SUITABLE FOR CONSTRUCTION/ ARCHITECTURAL PURPOSES. MEASUREMENTS ARE APPROXIMATE AND MAY NOT BE TO SCALE. E&O INSURED.