

# STRATA PLAN OF LOT A, SECTION 11, SUBURBAN LOT 40, ESQUIMALT DISTRICT, PLAN EPP95431

Sheet 1 of 17 Sheets

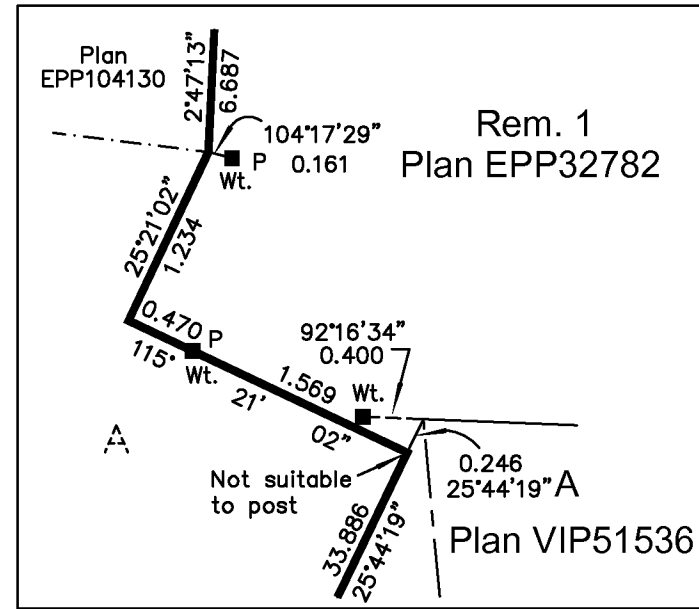
## STRATA PLAN EPS6167

BCGS 92B.043

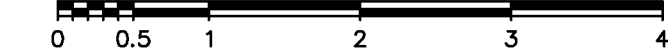
0 2 4 8 12 16 20  
The intended plot size of this plan is 560mm in width by 432mm in height (C size) when plotted at a scale of 1:200



Detail A



Scale of enlargement is 1:50 at intended plot size of plan



Civic Address: See Sheet 2

### LEGEND

- Found Placed
- Control Monument
- Standard Iron Post
- Lead Plug
- Corr. Denotes Corridor
- CP Denotes Common Property
- LCP Denotes Limited Common Property
- Mech. Denotes Mechanical
- P Denotes Lead Plug located in parking garage
- Pt. Denotes Part
- SL Denotes Strata Lot
- (typ.) Denotes typical
- All distances are in metres and decimals thereof

This plan lies within Integrated Survey Area No. 38, Esquimalt, NADB3 (CSRS) 3.0.0.BC.1.CRD

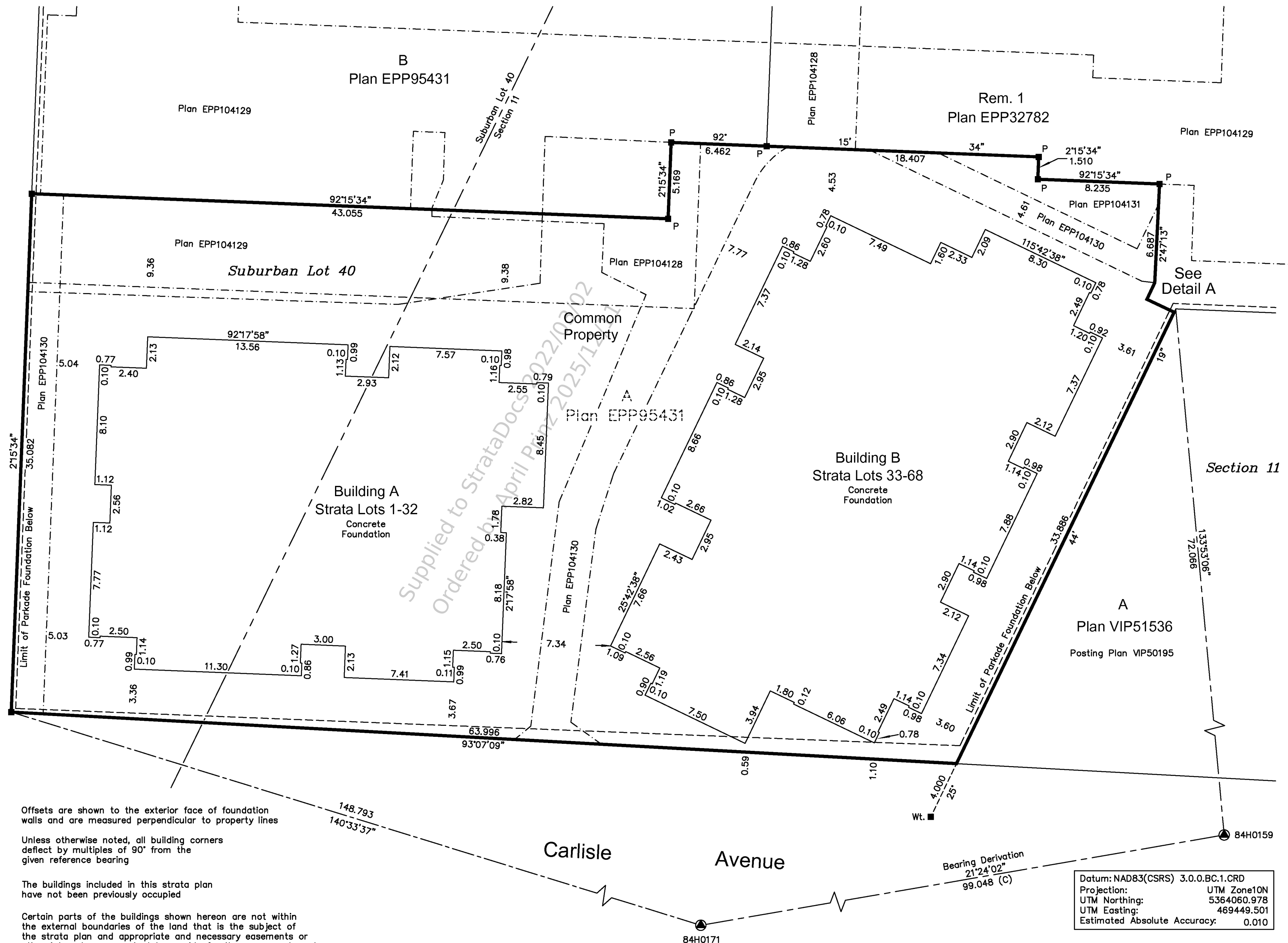
Grid bearings are derived from observations between geodetic control monuments 84H0159 and 84H0171 and are referred to the central meridian of UTM Zone 10.

The UTM coordinates and estimated absolute accuracy achieved are derived from the MASCOT published coordinates and standard deviations for geodetic control monuments 84H0159 and 84H0171.

This plan shows horizontal ground level distances, unless otherwise specified. To compute grid distances, multiply ground level distances by the average combined factor of 0.9996110. The average combined factor has been determined based on geodetic control monuments 84H0159 and 84H0171.

Horizontal Strata Lot boundaries are defined by:  
-Exterior sheathing of exterior walls  
-Exterior face of corridor/electrical/void walls  
-Centerline of walls between adjacent strata lots  
-Centerline of elevator/stairs walls

This plan shows one or more witness posts which are not set on the true corner(s).



Offsets are shown to the exterior face of foundation walls and are measured perpendicular to property lines

Unless otherwise noted, all building corners defect by multiples of 90° from the given reference bearing

The buildings included in this strata plan have not been previously occupied

Certain parts of the buildings shown hereon are not within the external boundaries of the land that is the subject of the strata plan and appropriate and necessary easements or other interests are required to provide for these encroachments.

The height of the strata unit is defined by the centerline of the floor above, or in the case of the top floor, the height is defined by the centerline of the ceiling

Patios, balconies and terraces are defined as to height, by the centerline of the floor above, or where there is no floor above, by the average height of the strata lot within

J.E. ANDERSON & ASSOCIATES  
B.C. Land Surveyors - Consulting Engineers  
Victoria-Nanaimo-Parksville-Campbell River, B.C.  
File: 30418  
V:\\_Projects\30418\08\02\Microsurvey\30418.dwg (STRATA PLAN)

Datum: NAD83(CSRS) 3.0.0.BC.1.CRD  
Projection: UTM Zone10N  
UTM Northing: 5363968.795  
UTM Easting: 469413.374  
Estimated Absolute Accuracy: 0.008

Datum: NAD83(CSRS) 3.0.0.BC.1.CRD  
Projection: UTM Zone10N  
UTM Northing: 5364060.978  
UTM Easting: 469449.501  
Estimated Absolute Accuracy: 0.010

This plan lies within the Township of Esquimalt and the Capital Regional District

The field survey represented by this plan was completed on the 10th day of August, 2020.

Ryan P. Hourston, BCLS 887

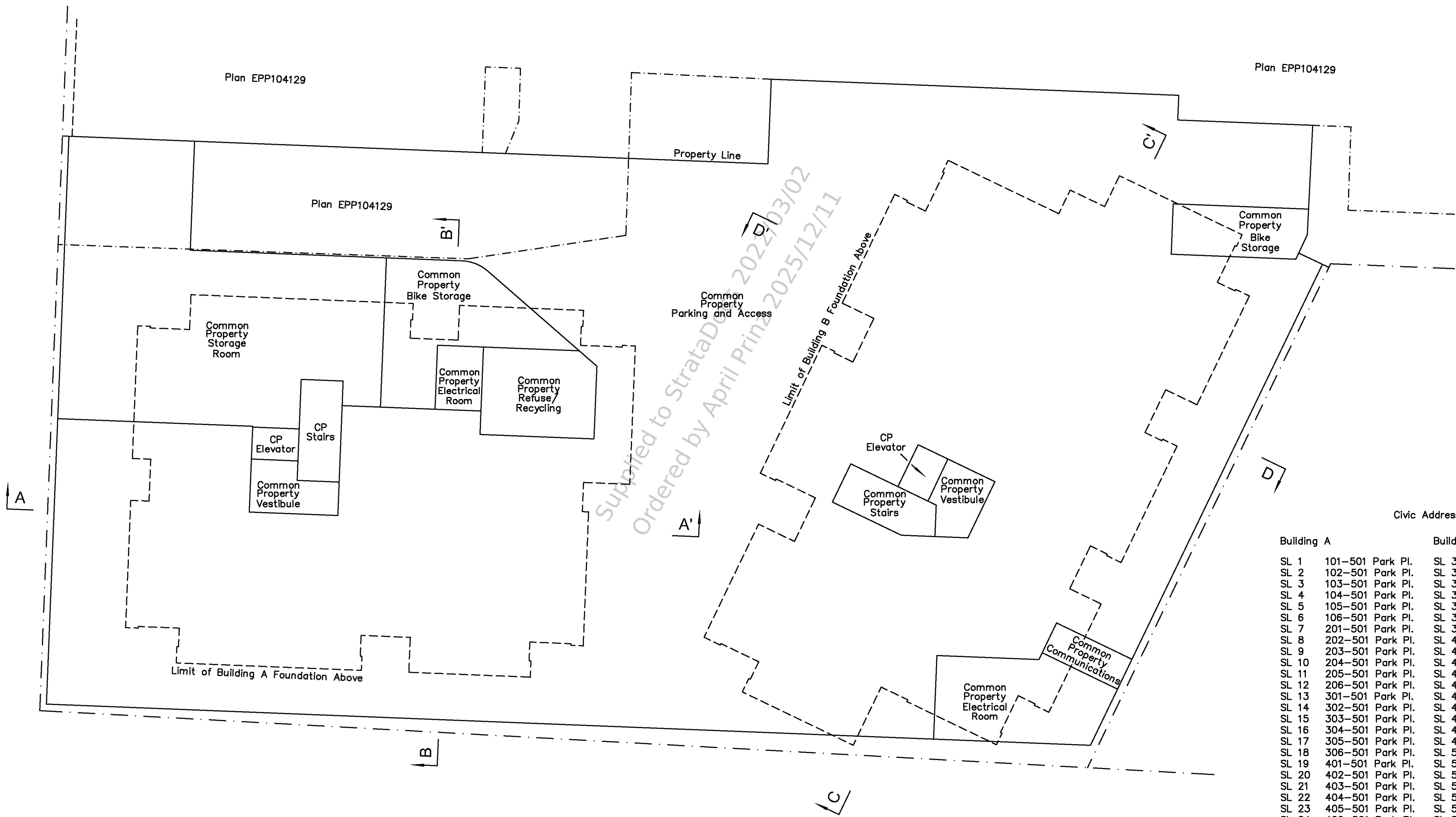
Ordered By: April Prinz of RE/MAX Camosun on 2025/12/11  
Document Uploaded and Verified: 2022/05/02

# PARKING LEVEL 1

Sheet 2 of 17 Sheets

## STRATA PLAN EPS6167

0 2 4 8 12 16 20  
 The intended plot size of this plan is 560mm in width by 432mm in height (C size) when plotted at a scale of 1:200



Civic Address:

Building A		Building B	
SL 1	101-501 Park Pl.	SL 33	101-1216 Carlisle Ave.
SL 2	102-501 Park Pl.	SL 34	102-1216 Carlisle Ave.
SL 3	103-501 Park Pl.	SL 35	103-1216 Carlisle Ave.
SL 4	104-501 Park Pl.	SL 36	104-1216 Carlisle Ave.
SL 5	105-501 Park Pl.	SL 37	105-1216 Carlisle Ave.
SL 6	106-501 Park Pl.	SL 38	106-1216 Carlisle Ave.
SL 7	201-501 Park Pl.	SL 39	107-1216 Carlisle Ave.
SL 8	202-501 Park Pl.	SL 40	201-1216 Carlisle Ave.
SL 9	203-501 Park Pl.	SL 41	202-1216 Carlisle Ave.
SL 10	204-501 Park Pl.	SL 42	203-1216 Carlisle Ave.
SL 11	205-501 Park Pl.	SL 43	204-1216 Carlisle Ave.
SL 12	206-501 Park Pl.	SL 44	205-1216 Carlisle Ave.
SL 13	301-501 Park Pl.	SL 45	206-1216 Carlisle Ave.
SL 14	302-501 Park Pl.	SL 46	207-1216 Carlisle Ave.
SL 15	303-501 Park Pl.	SL 47	301-1216 Carlisle Ave.
SL 16	304-501 Park Pl.	SL 48	302-1216 Carlisle Ave.
SL 17	305-501 Park Pl.	SL 49	303-1216 Carlisle Ave.
SL 18	306-501 Park Pl.	SL 50	304-1216 Carlisle Ave.
SL 19	401-501 Park Pl.	SL 51	305-1216 Carlisle Ave.
SL 20	402-501 Park Pl.	SL 52	306-1216 Carlisle Ave.
SL 21	403-501 Park Pl.	SL 53	307-1216 Carlisle Ave.
SL 22	404-501 Park Pl.	SL 54	401-1216 Carlisle Ave.
SL 23	405-501 Park Pl.	SL 55	402-1216 Carlisle Ave.
SL 24	406-501 Park Pl.	SL 56	403-1216 Carlisle Ave.
SL 25	501-501 Park Pl.	SL 57	404-1216 Carlisle Ave.
SL 26	502-501 Park Pl.	SL 58	405-1216 Carlisle Ave.
SL 27	503-501 Park Pl.	SL 59	406-1216 Carlisle Ave.
SL 28	504-501 Park Pl.	SL 60	407-1216 Carlisle Ave.
SL 29	601-501 Park Pl.	SL 61	501-1216 Carlisle Ave.
SL 30	602-501 Park Pl.	SL 62	502-1216 Carlisle Ave.
SL 31	603-501 Park Pl.	SL 63	503-1216 Carlisle Ave.
SL 32	604-501 Park Pl.	SL 64	504-1216 Carlisle Ave.
		SL 65	601-1216 Carlisle Ave.
		SL 66	602-1216 Carlisle Ave.
		SL 67	603-1216 Carlisle Ave.
		SL 68	604-1216 Carlisle Ave.

J.E. ANDERSON & ASSOCIATES  
 B.C. Land Surveyors - Consulting Engineers  
 Victoria-Nanaimo-Parksville-Campbell River, B.C.  
 File: 30418  
 V:\\_Projects\30418\08\02\Microsurvey\30418.dwg (STRATA PLAN)

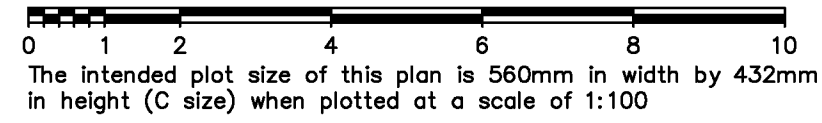
10th day of August, 2020.  
 Ryan P. Hourston, BCLS 887

Ordered By: April Prinz of RE/MAX Camosun on 2025/12/11  
 Document Uploaded and Verified: 2022/05/02

# BUILDING A - LEVEL 1 - STRATA LOTS 1 TO 6

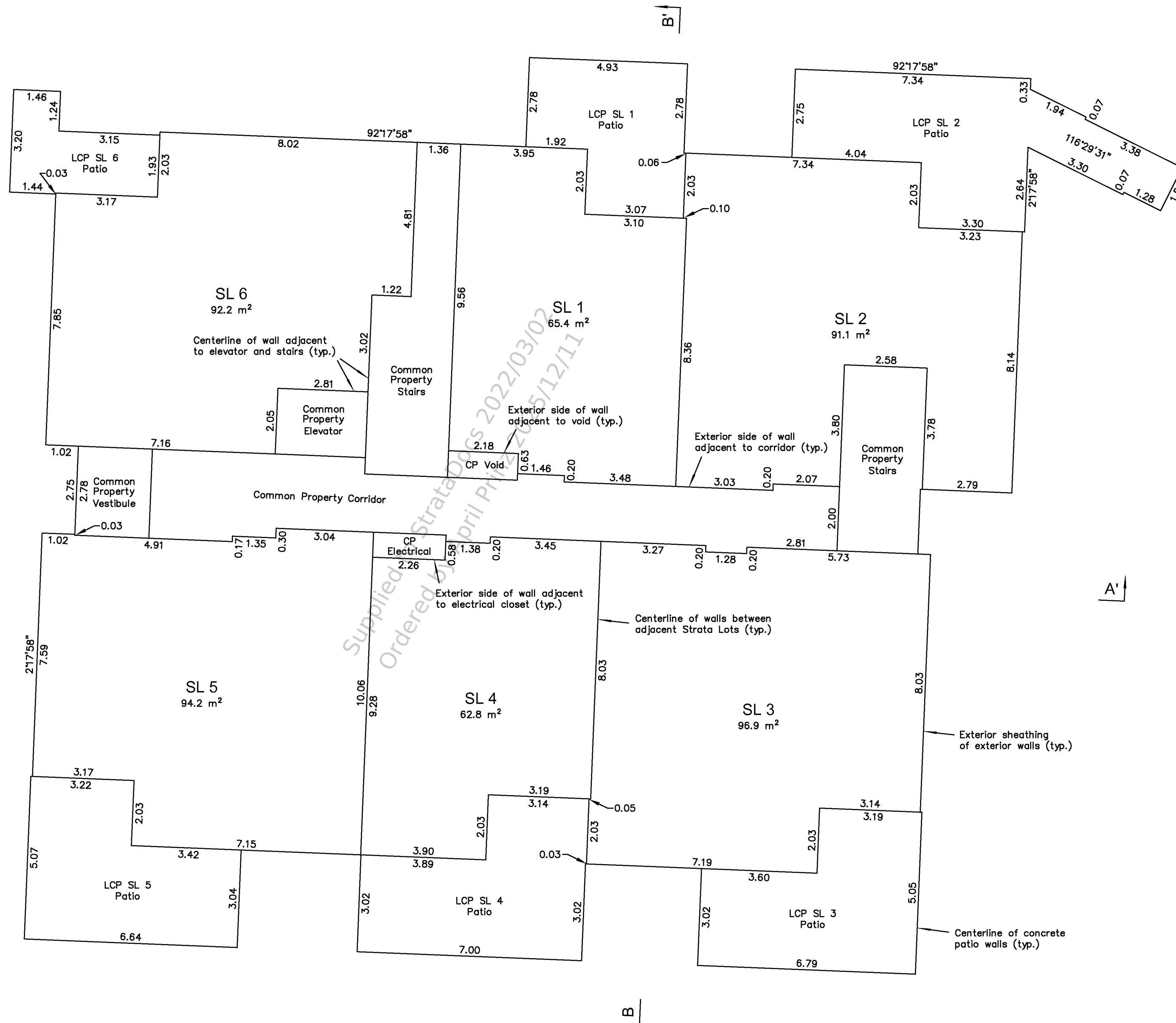
Sheet 3 of 17 Sheets

## STRATA PLAN EPS6167



All distances are in metres and decimals thereof

Unless otherwise noted, all building corners defect by multiples of 90° from the given reference bearing

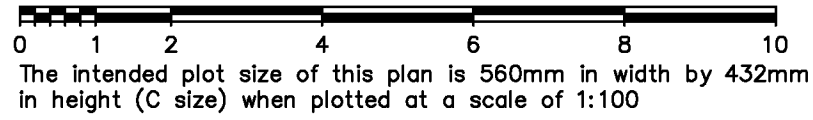


Ordered By: April Prinz of RE/MAX Camosun on 2025/12/11  
 Document Uploaded and Verified: 2022/05/02

# BUILDING A - LEVEL 2 - STRATA LOTS 7 TO 12

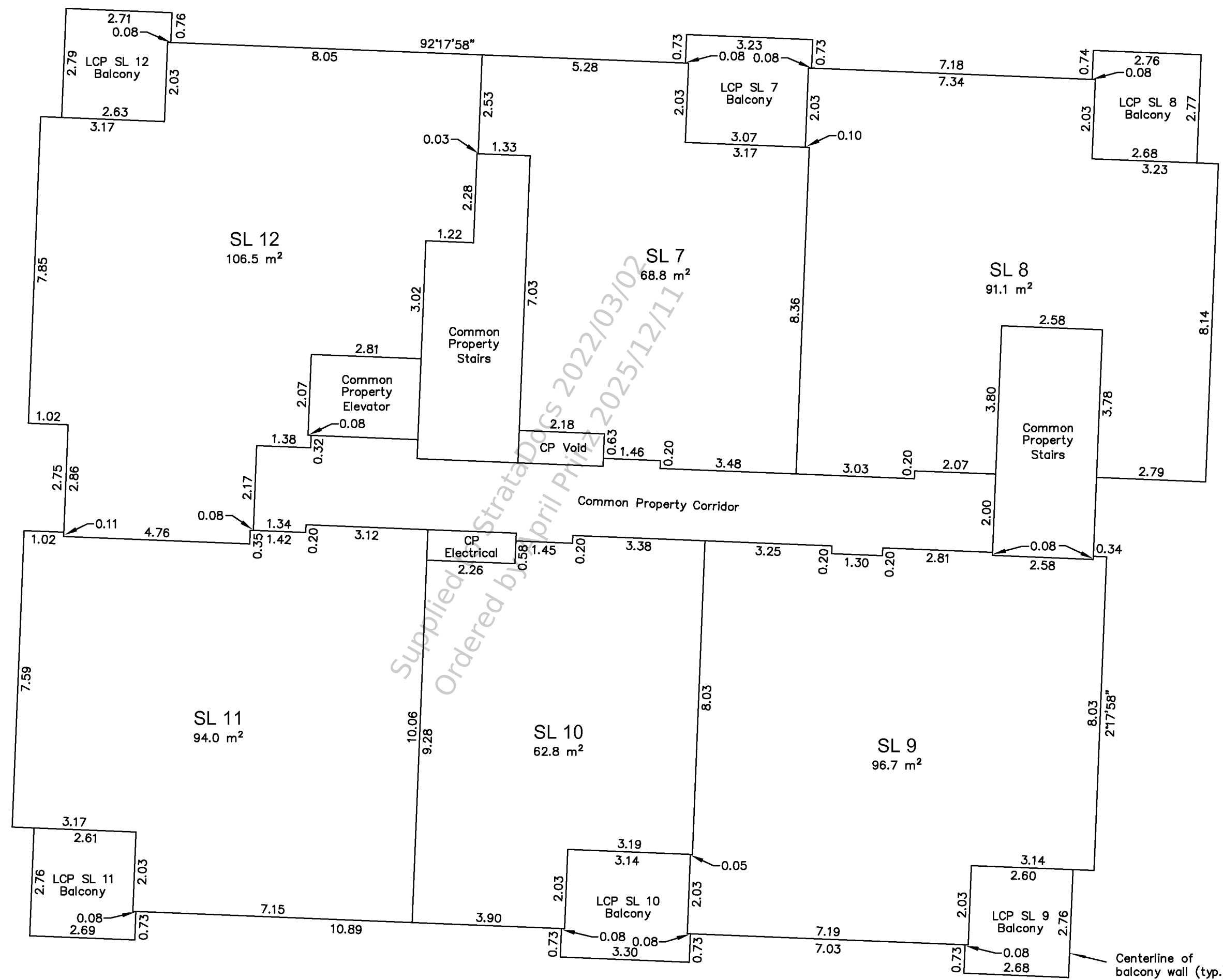
Sheet 4 of 17 Sheets

## STRATA PLAN EPS6167



All distances are in metres and decimals thereof

Unless otherwise noted, all building corners defect by multiples of 90° from the given reference bearing



Supplied by StrataDocs 2022/03/02  
 Ordered by April Prinz 2025/12/11

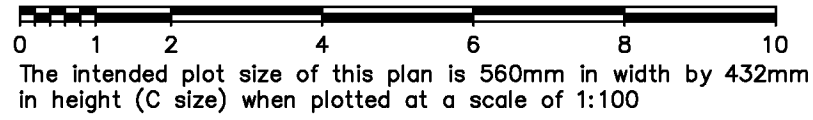
This document was obtained from the VREB StrataDocs System. Its use is subject to agreed upon terms and disclaimers.

Ordered By: April Prinz of RE/MAX Camosun on 2025/12/11  
 Document Uploaded and Verified: 2022/03/02

# BUILDING A - LEVEL 3 - STRATA LOTS 13 TO 18

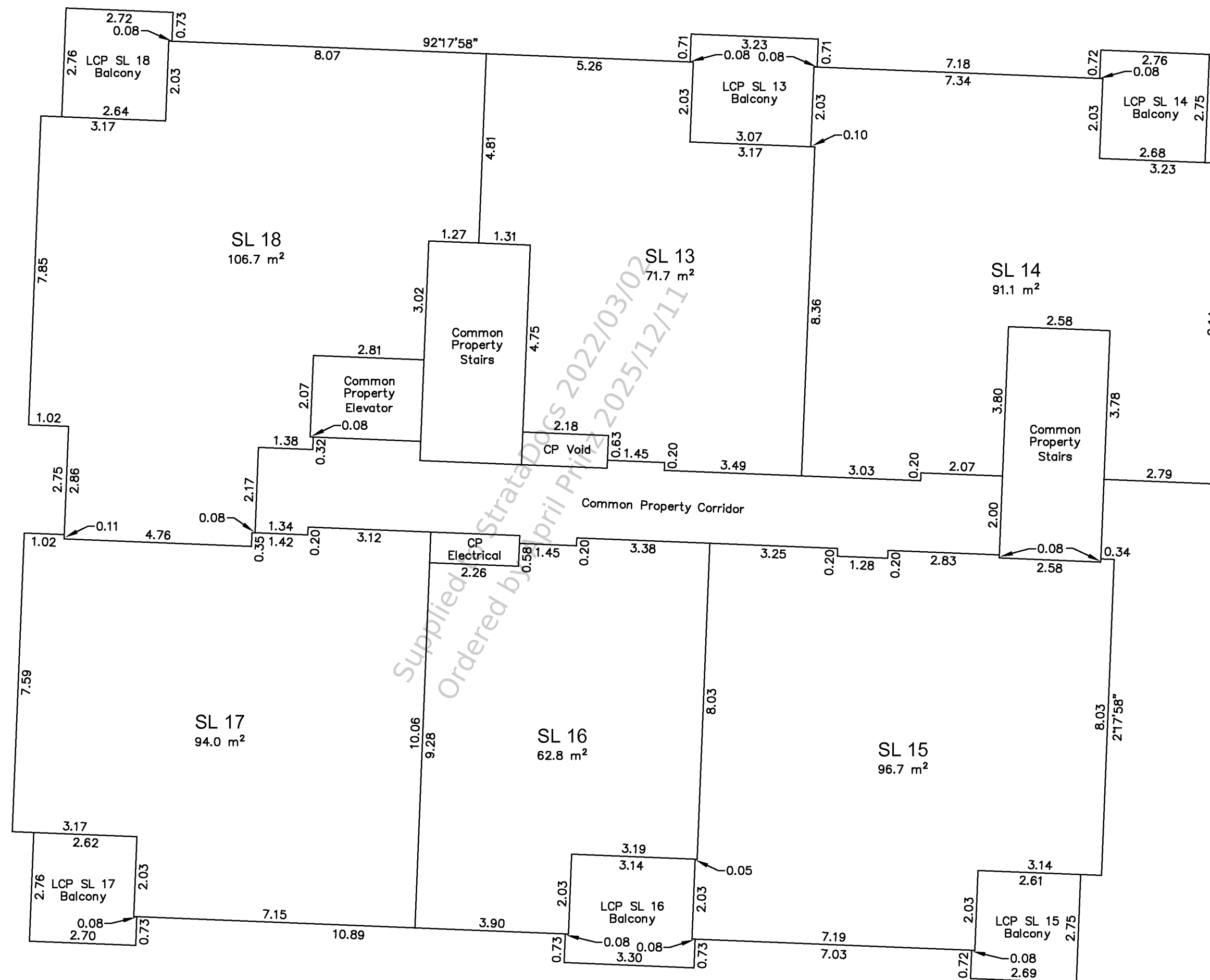
Sheet 5 of 17 Sheets

## STRATA PLAN EPS6167



All distances are in metres and decimals thereof

Unless otherwise noted, all building corners defect by multiples of 90° from the given reference bearing



A

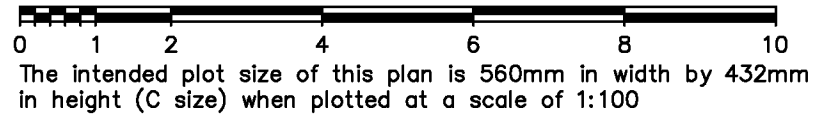
A'

B

# BUILDING A - LEVEL 4 - STRATA LOTS 19 TO 24

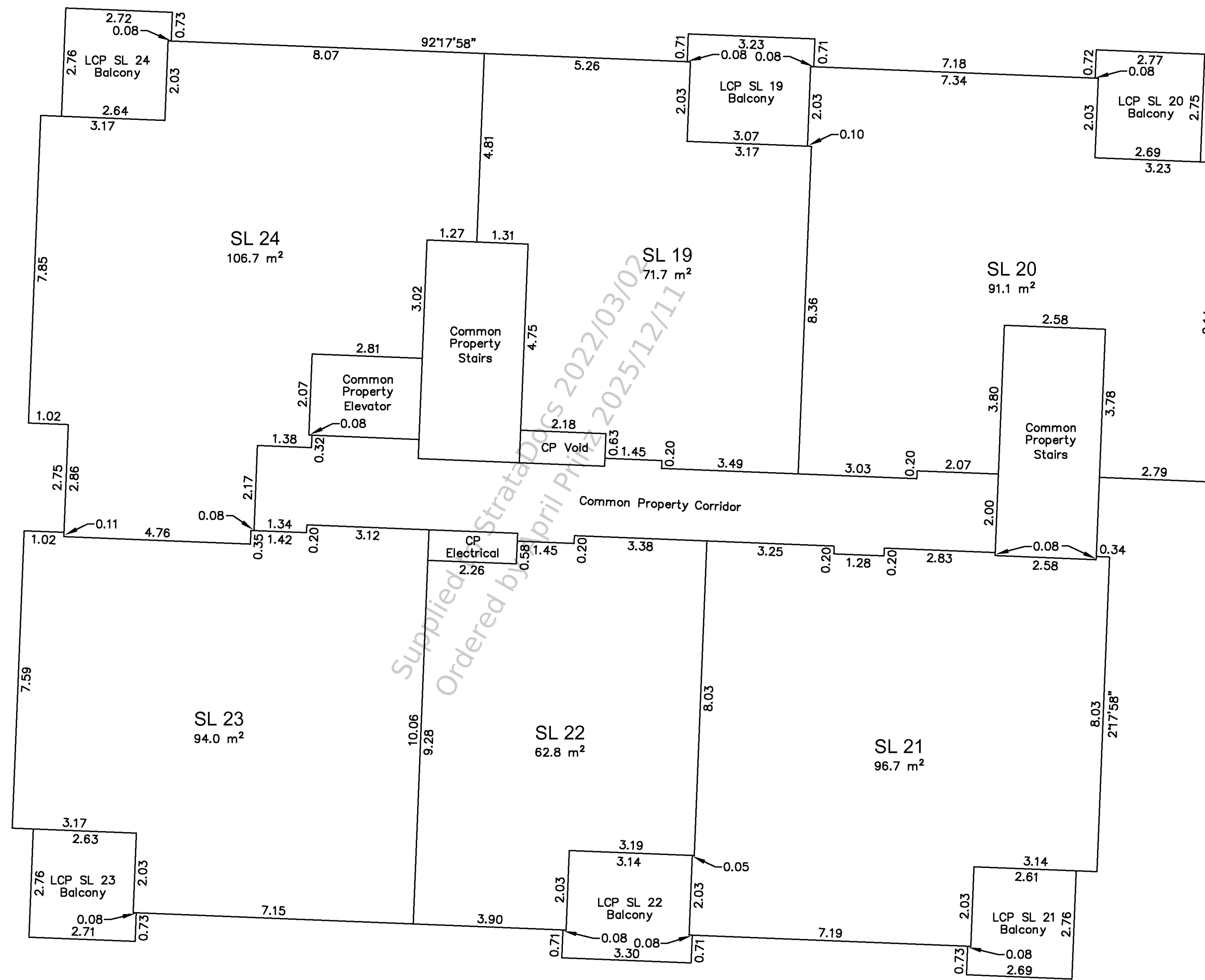
Sheet 6 of 17 Sheets

## STRATA PLAN EPS6167



All distances are in metres and decimals thereof

Unless otherwise noted, all building corners defect by multiples of 90° from the given reference bearing



Supplied by StrataDocs 2022/03/02  
 Ordered by April Prinz 2025/12/11

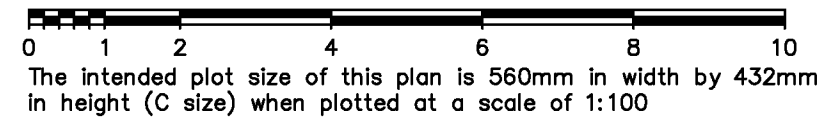
This document was obtained from the VREB StrataDocs System. Its use is subject to agreed upon terms and disclaimers.

Ordered By: April Prinz of RE/MAX Camosun on 2025/12/11  
 Document Uploaded and Verified: 2022/03/02

# BUILDING A - LEVEL 5 - STRATA LOTS 25 TO 28

Sheet 7 of 17 Sheets

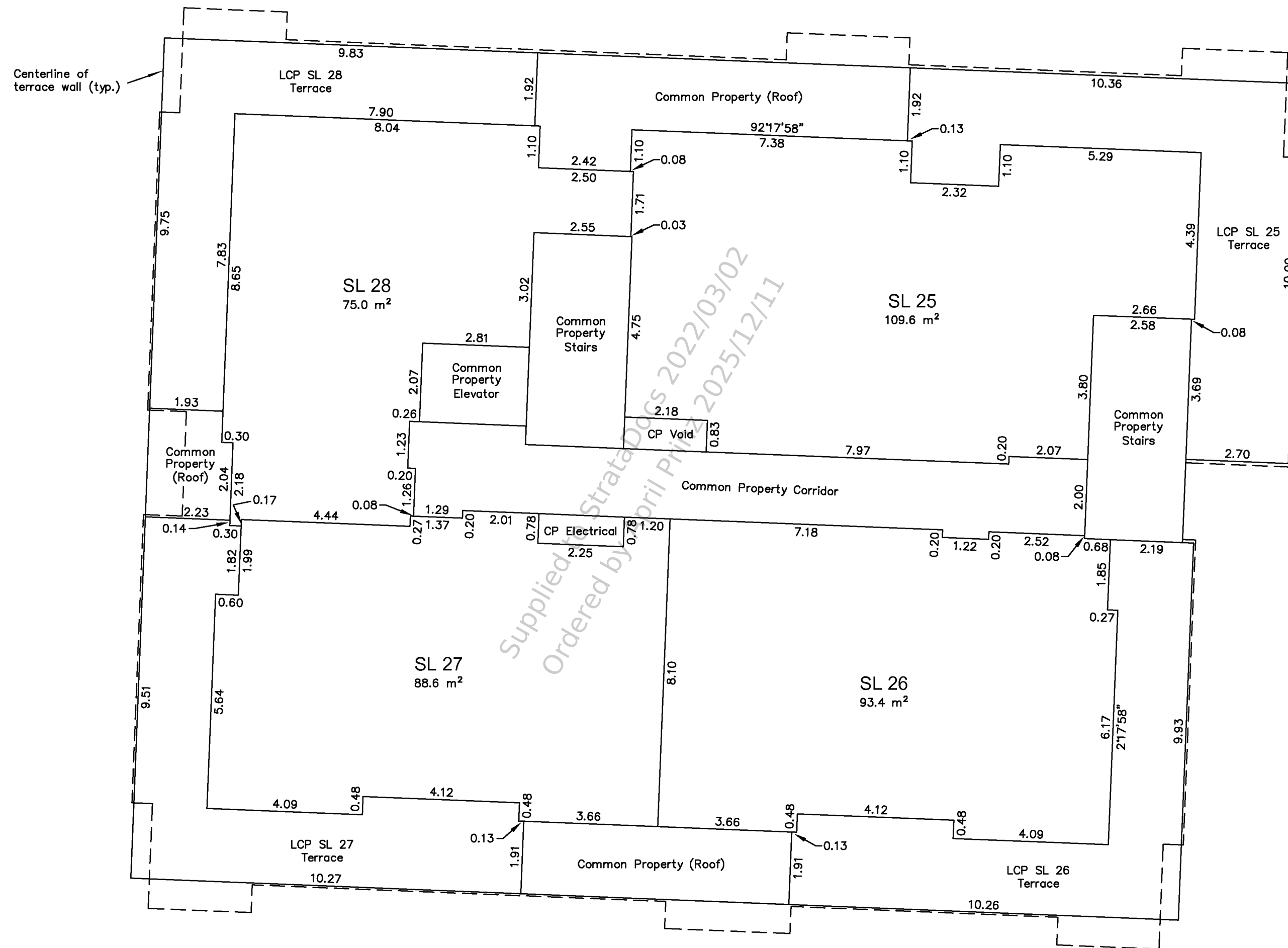
## STRATA PLAN EPS6167



All distances are in metres and decimals thereof

Unless otherwise noted, all building corners defect by multiples of 90° from the given reference bearing

--- Denotes perimeter of floor below



Supplied to StrataDocs 2022/03/02  
 Ordered by April Prinz 2025/12/11

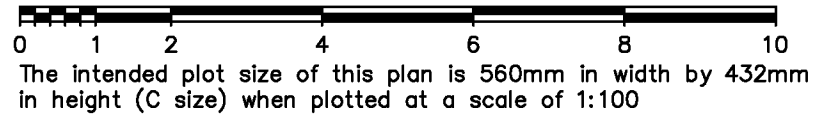
This document was obtained from the VREB StrataDocs System. Its use is subject to agreed upon terms and disclaimers.

Ordered By: April Prinz of RE/MAX Camosun on 2025/12/11  
 Document Uploaded and Verified: 2022/03/02

# BUILDING A - LEVEL 6 - PART STRATA LOTS 29 TO 32

Sheet 8 of 17 Sheets

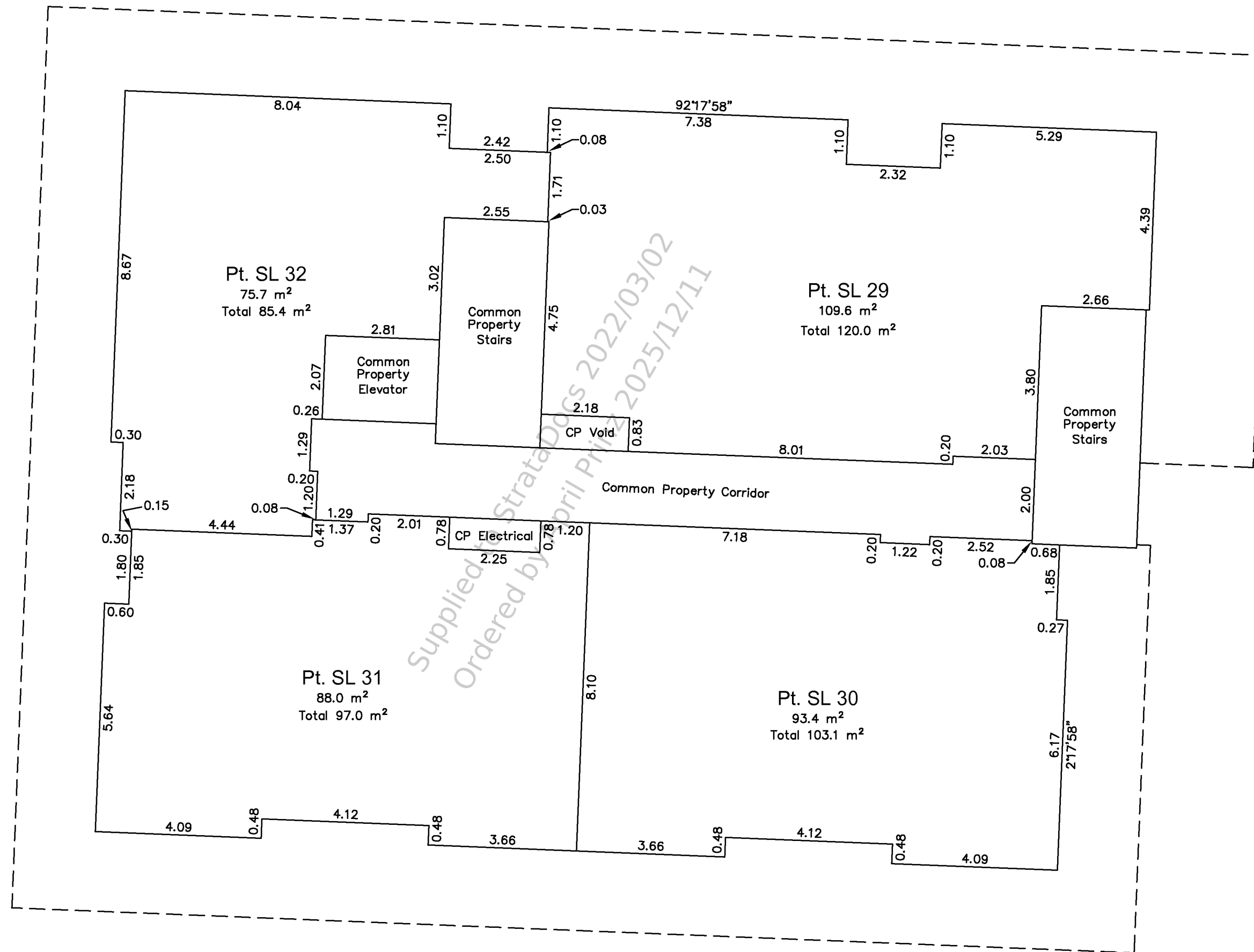
## STRATA PLAN EPS6167



All distances are in metres and decimals thereof

Unless otherwise noted, all building corners defect by multiples of 90° from the given reference bearing

--- Denotes perimeter of floor below



Supplied by StrataDocs 2022/03/02  
 Ordered by April Prinz 2025/12/11

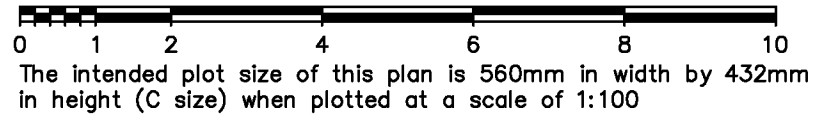
This document was obtained from the VREB StrataDocs System. Its use is subject to agreed upon terms and disclaimers.

Ordered By: April Prinz of RE/MAX Camosun on 2025/12/11  
 Document Uploaded and Verified: 2022/03/02

# BUILDING A - LEVEL 7 ROOF - PART STRATA LOTS 29 TO 32

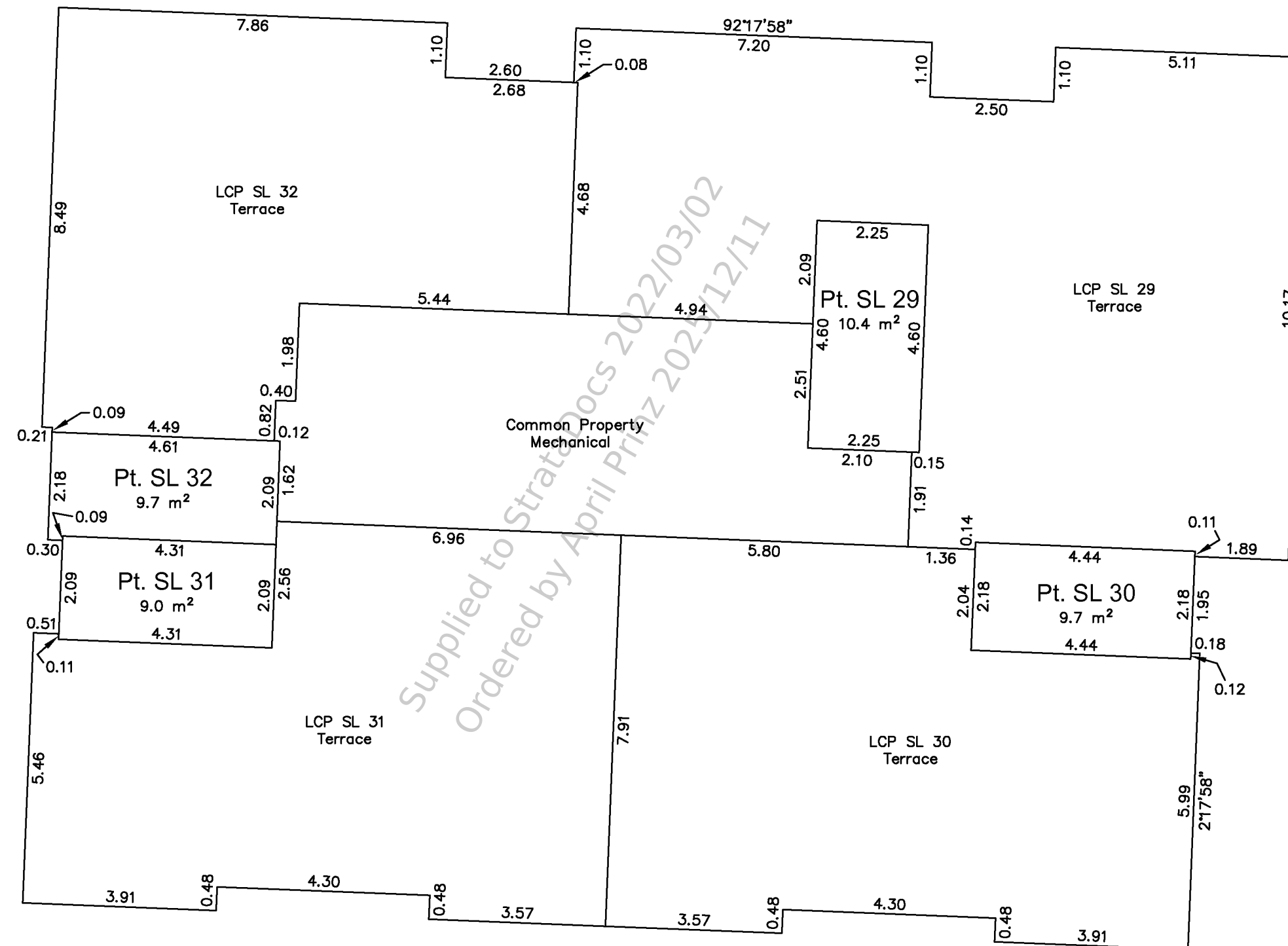
Sheet 9 of 17 Sheets

## STRATA PLAN EPS6167



All distances are in metres and decimals thereof

Unless otherwise noted, all building corners defect by multiples of 90° from the given reference bearing



Supplied to StrataDocs 2022/03/02  
 Ordered by April Prinz 2022/12/11

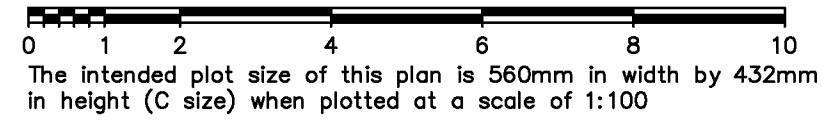
This document was obtained from the VREB StrataDocs System. Its use is subject to agreed upon terms and disclaimers.

Ordered By: April Prinz of RE/MAX Camosun on 2025/12/11  
 Document Uploaded and Verified: 2022/03/02

# BUILDING B - LEVEL 1 - STRATA LOTS 33 TO 39

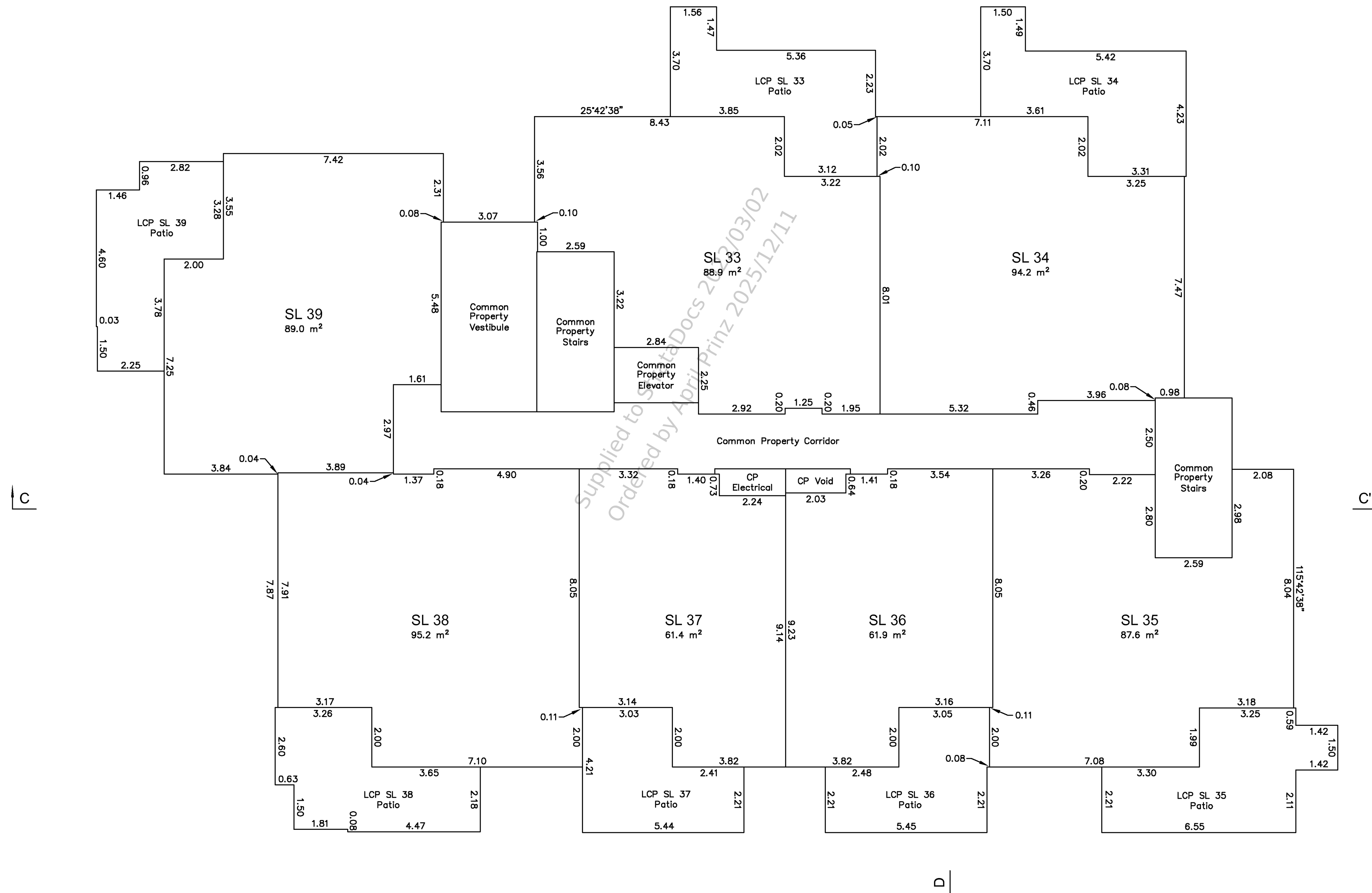
Sheet 10 of 17 Sheets

## STRATA PLAN EPS6167



All distances are in metres and decimals thereof

Unless otherwise noted, all building corners defect by multiples of 90° from the given reference bearing



J.E. ANDERSON & ASSOCIATES  
 B.C. Land Surveyors – Consulting Engineers  
 Victoria–Nanaimo–Parksville–Campbell River, B.C.  
 File: 30418  
 V:\\_Projects\30418\08\02\Microsurvey\30418.dwg (STRATA PLAN)

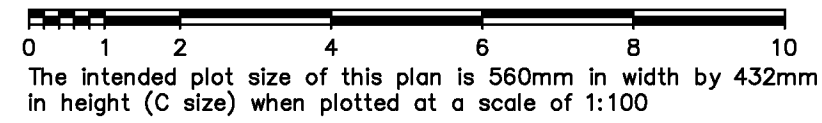
10th day of August, 2020.  
 Ryan P. Hourston, BCLS 887

Ordered By: April Prinz of RE/MAX Camosun on 2025/12/11  
 Document Uploaded and Verified: 2022/03/02

# BUILDING B - LEVEL 2 - STRATA LOTS 40 TO 46

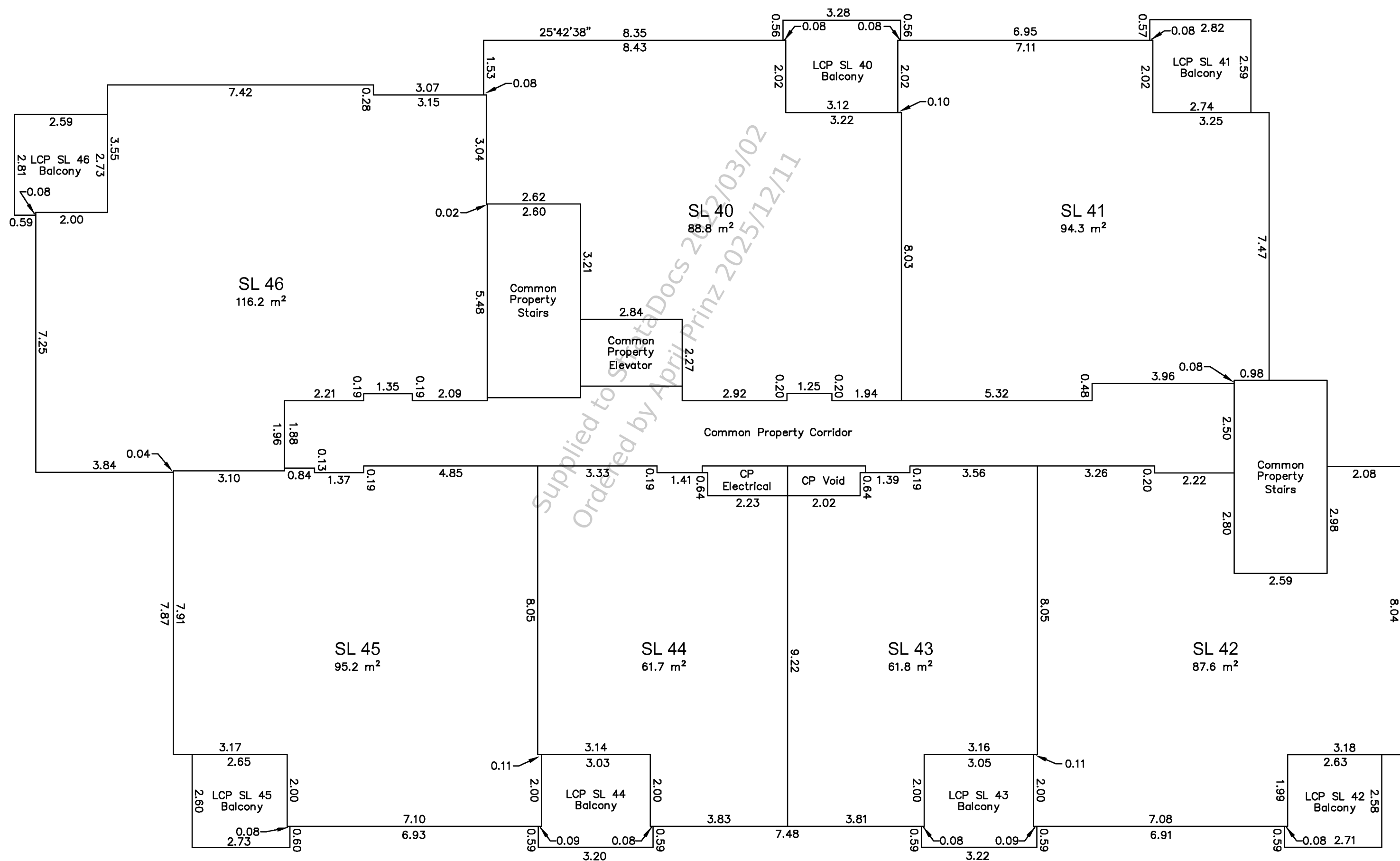
Sheet 11 of 17 Sheets

## STRATA PLAN EPS6167



All distances are in metres and decimals thereof

Unless otherwise noted, all building corners defect by multiples of 90° from the given reference bearing



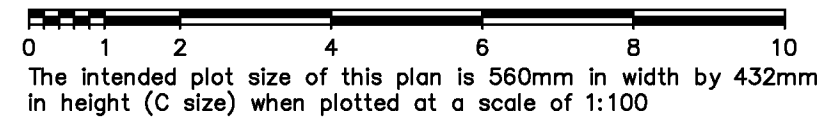
This document was obtained from the VREB StrataDocs System. Its use is subject to agreed upon terms and disclaimers.

Ordered By: April Prinz of RE/MAX Camosun on 2025/12/11  
Document Uploaded and Verified: 2022/03/02

# BUILDING B - LEVEL 3 - STRATA LOTS 47 TO 53

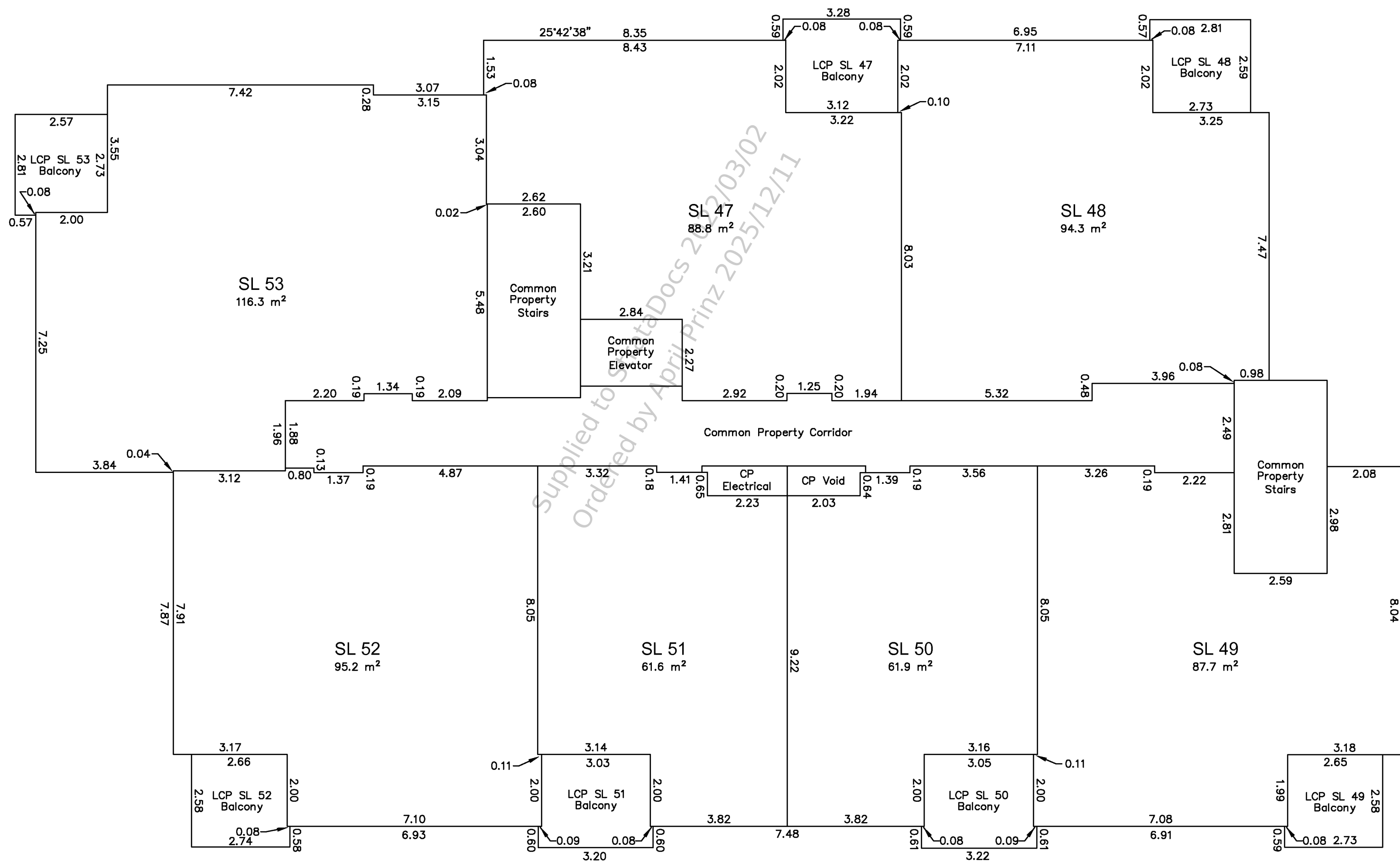
Sheet 12 of 17 Sheets

## STRATA PLAN EPS6167



All distances are in metres and decimals thereof

Unless otherwise noted, all building corners defect by multiples of 90° from the given reference bearing



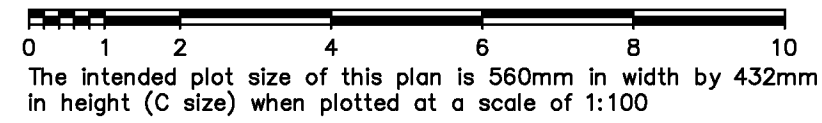
This document was obtained from the VREB StrataDocs System. Its use is subject to agreed upon terms and disclaimers.

Ordered By: April Prinz of RE/MAX Camosun on 2025/12/11  
Document Uploaded and Verified: 2022/03/02

# BUILDING B - LEVEL 4 - STRATA LOTS 54 TO 60

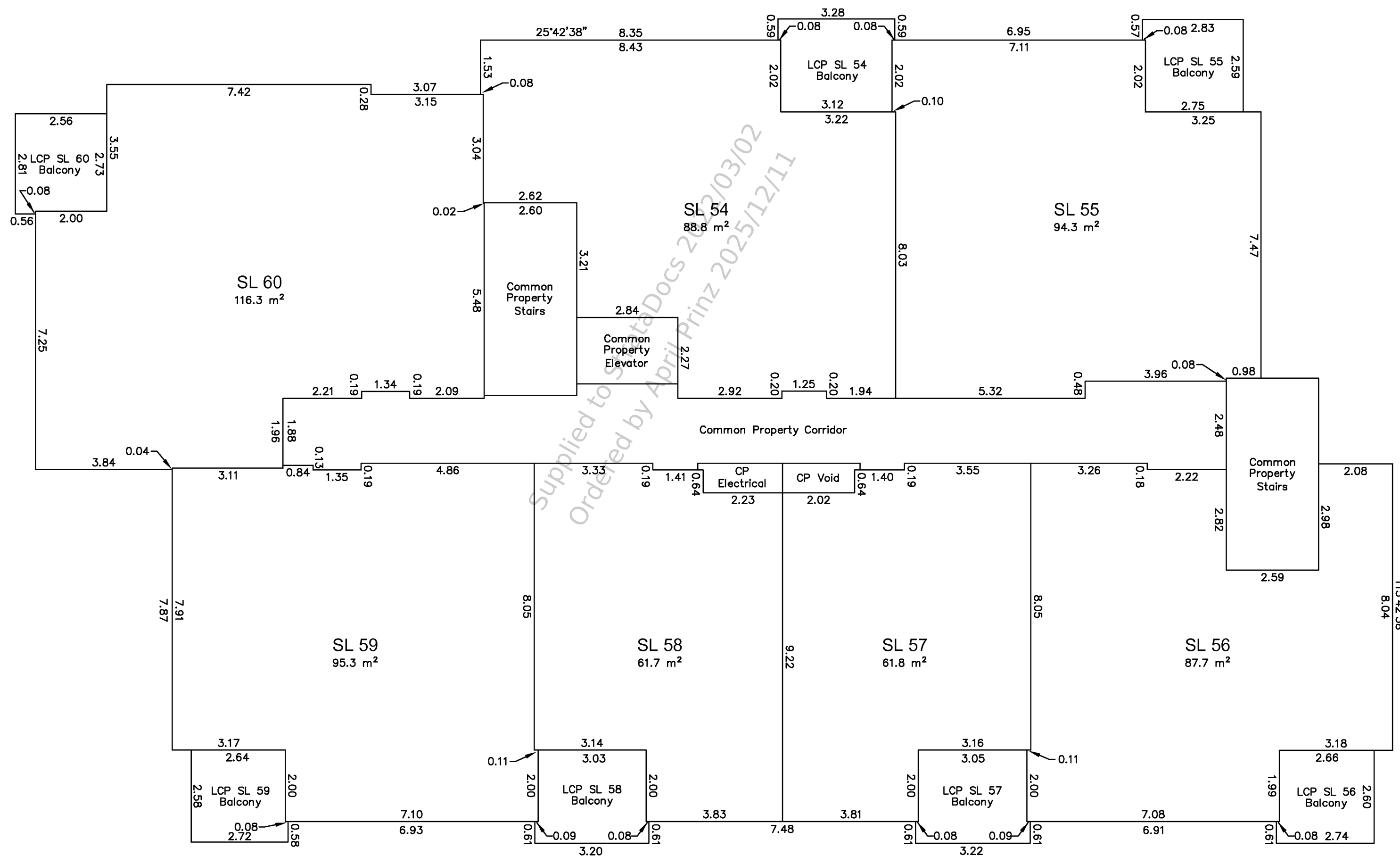
Sheet 13 of 17 Sheets

## STRATA PLAN EPS6167



All distances are in metres and decimals thereof

Unless otherwise noted, all building corners defect by multiples of 90° from the given reference bearing



This document was obtained from the VREB StrataDocs System. Its use is subject to agreed upon terms and disclaimers.

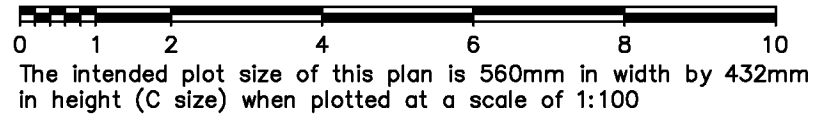
Ordered By: April Prinz of RE/MAX Camosun on 2025/12/11  
Document Uploaded and Verified: 2022/03/02



# BUILDING B - LEVEL 6 - PART STRATA LOTS 65 TO 68

Sheet 15 of 17 Sheets

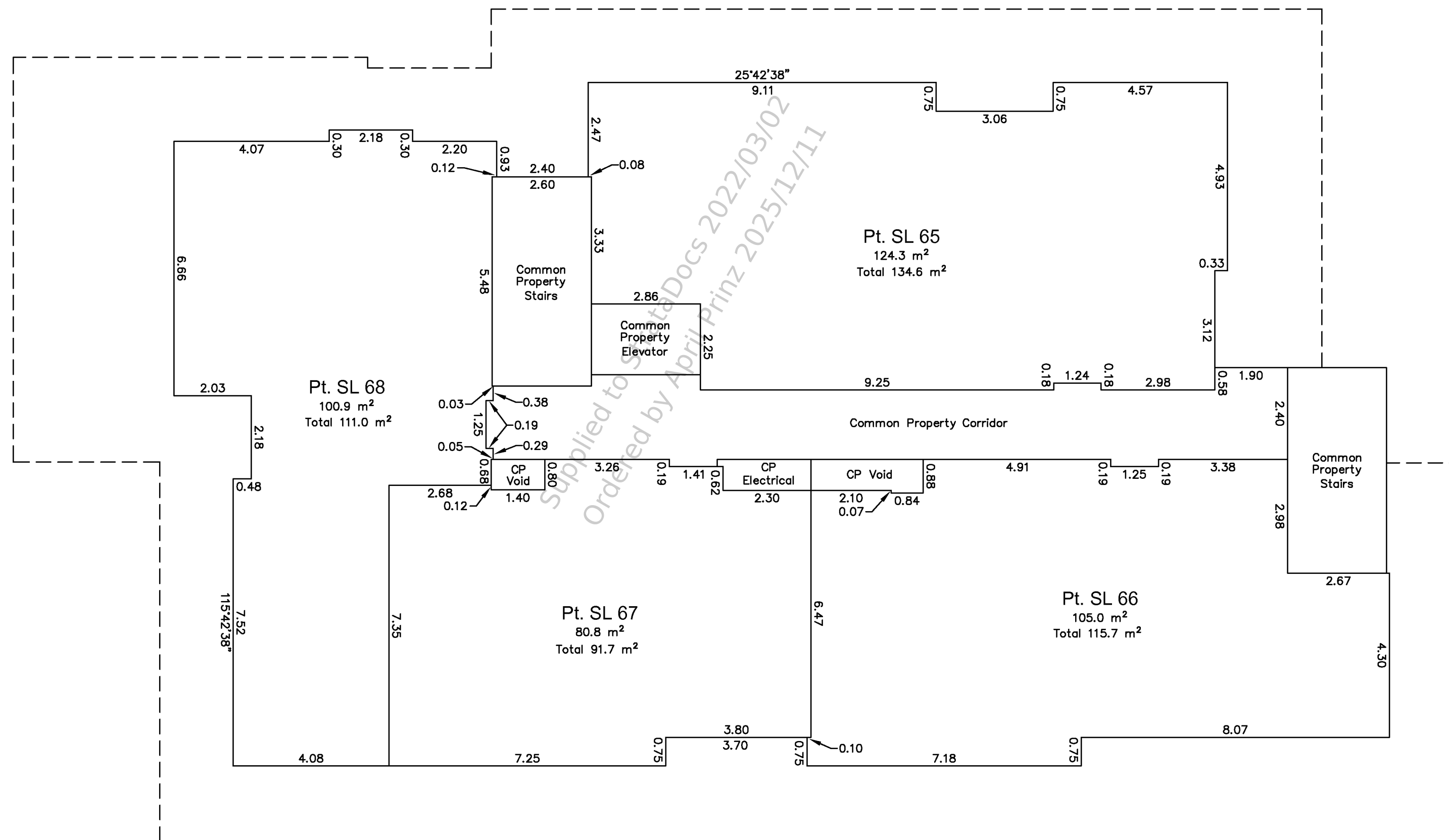
## STRATA PLAN EPS6167



All distances are in metres and decimals thereof

Unless otherwise noted, all building corners defect by multiples of 90° from the given reference bearing

--- Denotes perimeter of floor below



Supplied to Strata Docs 2022/03/02  
 Ordered by April Prinz 2025/12/11

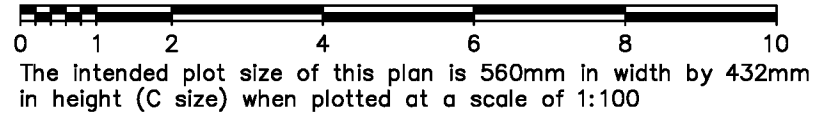
This document was obtained from the VREB StrataDocs System. Its use is subject to agreed upon terms and disclaimers.

Ordered By: April Prinz of RE/MAX Camosun on 2025/12/11  
 Document Uploaded and Verified: 2022/03/02

# BUILDING B - LEVEL 7 ROOF - PART STRATA LOTS 65 TO 68

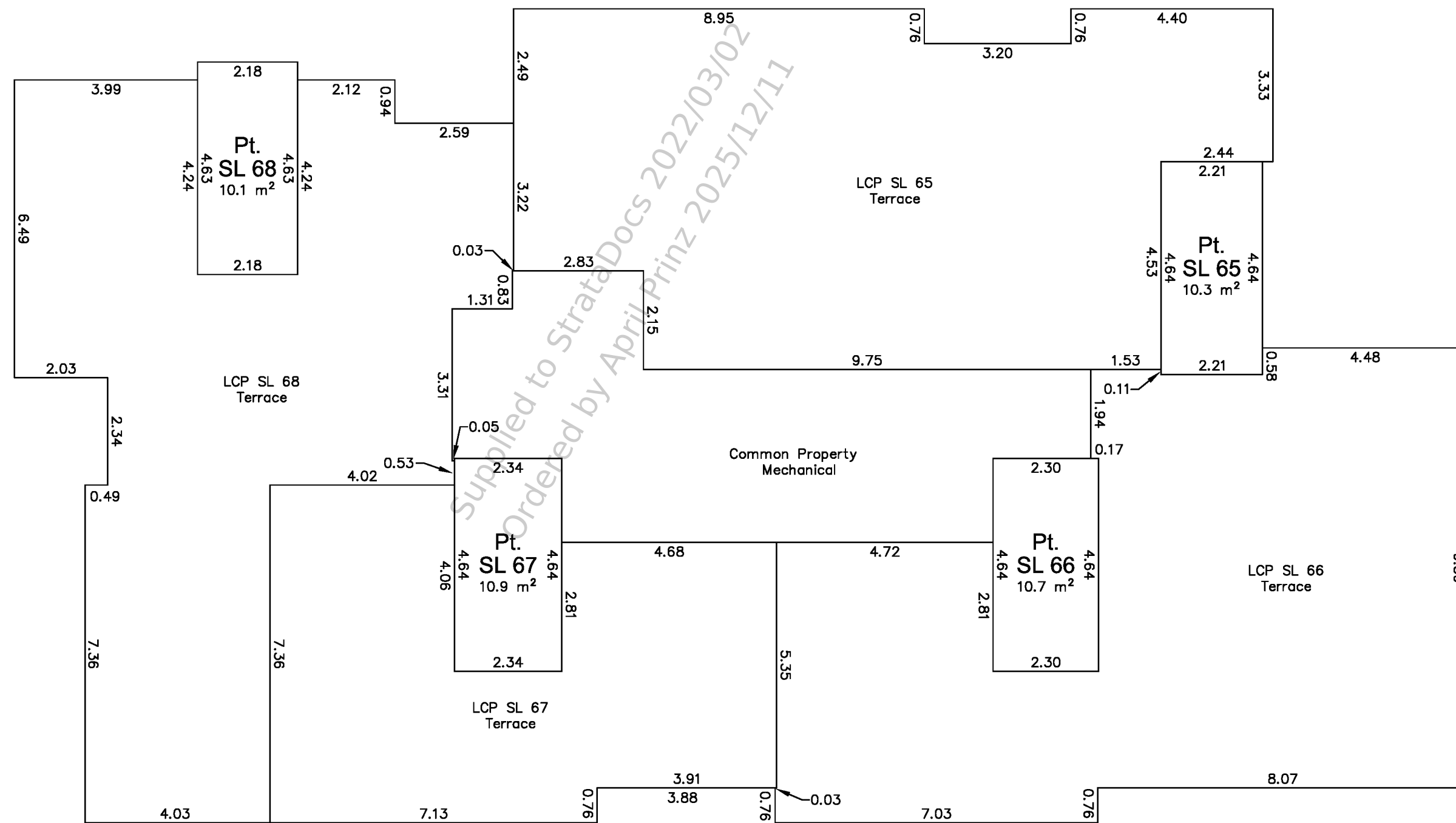
Sheet 16 of 17 Sheets

## STRATA PLAN EPS6167



All distances are in metres and decimals thereof

Unless otherwise noted, all building corners defect by multiples of 90° from the given reference bearing



C

C

D

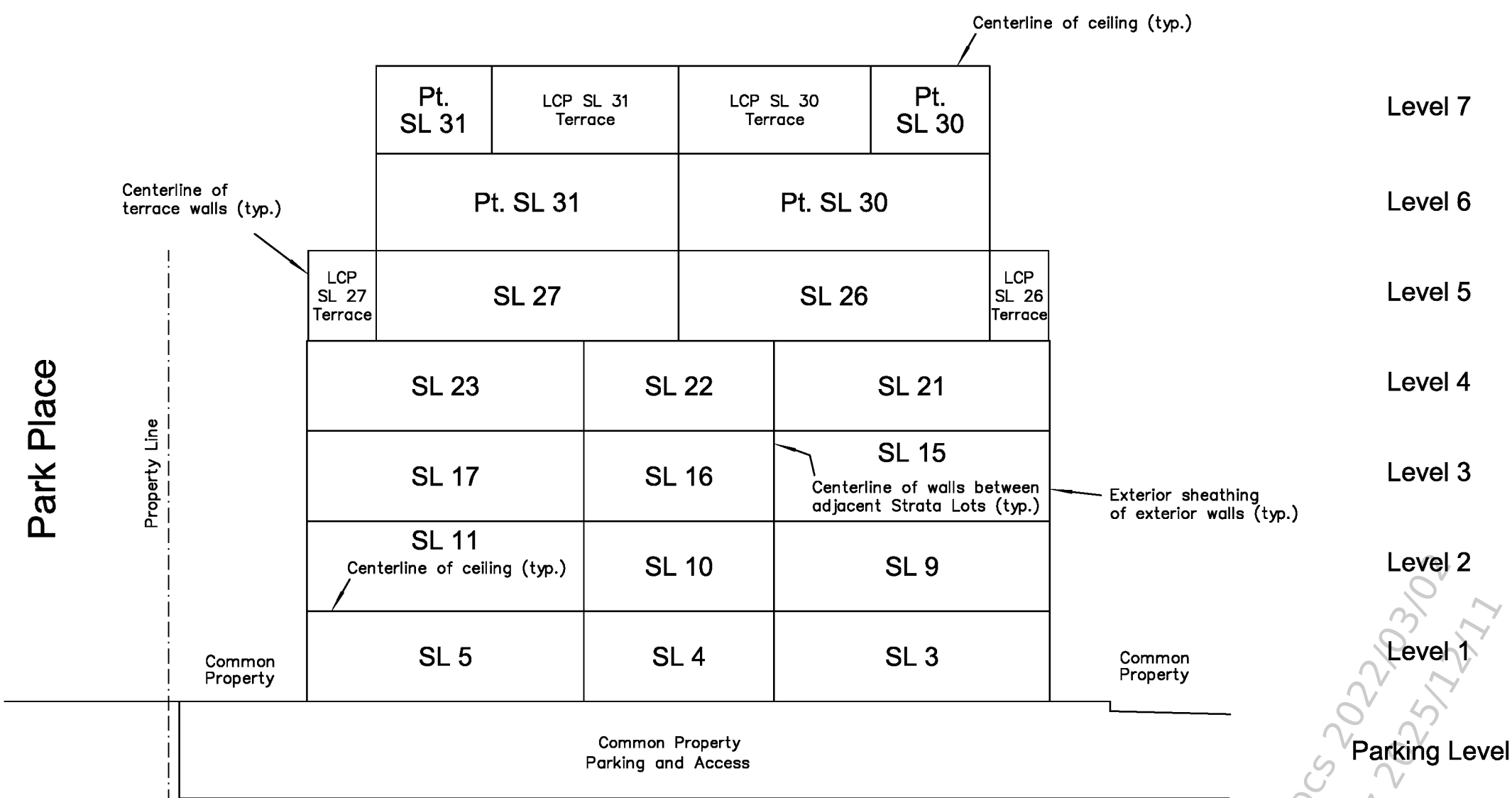
D

Ordered By: April Prinz of RE/MAX Camosun on 2025/12/11  
 Document Uploaded and Verified: 2022/03/02

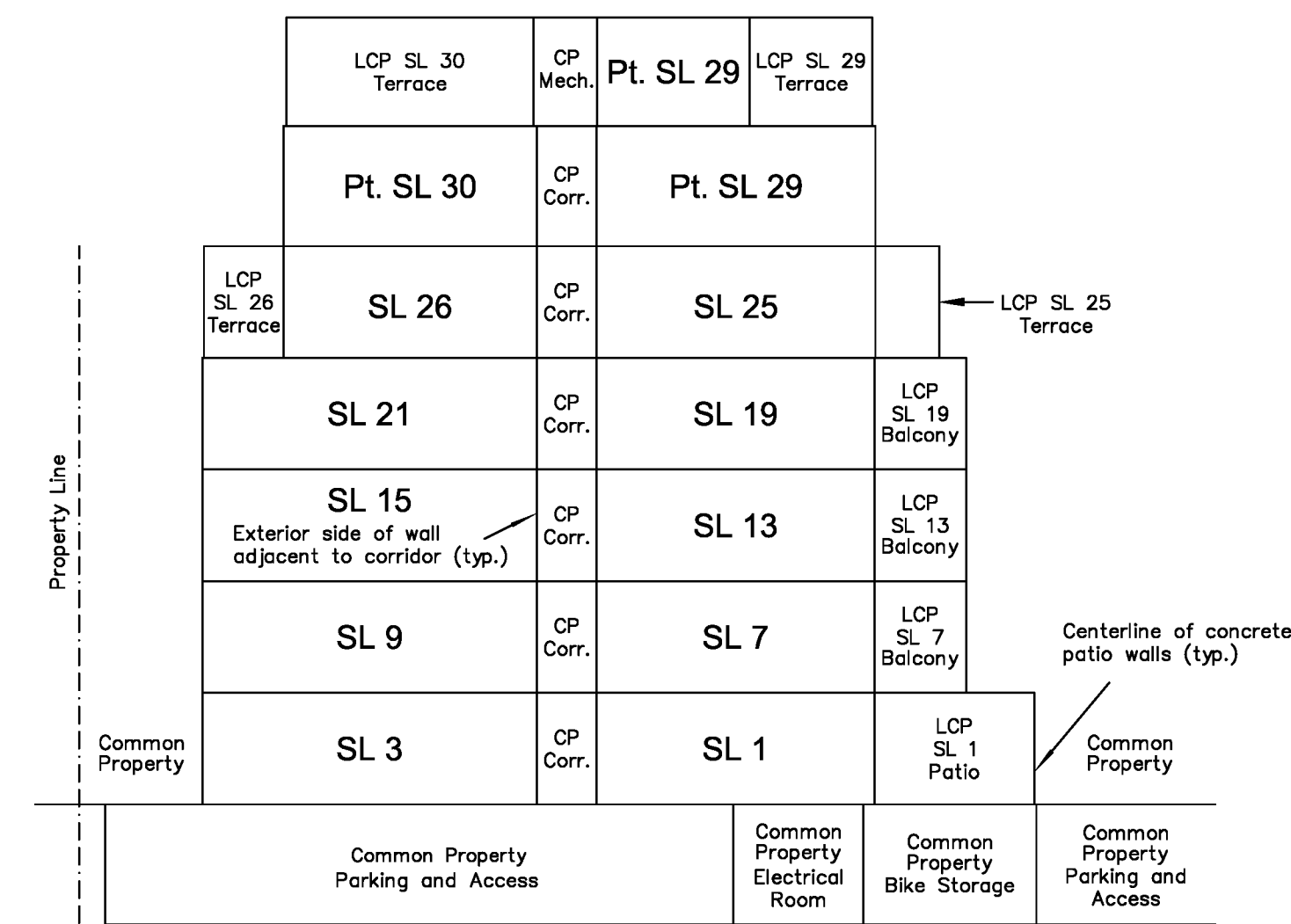
# BUILDING CROSS SECTIONS

Sheet 17 of 17 Sheets

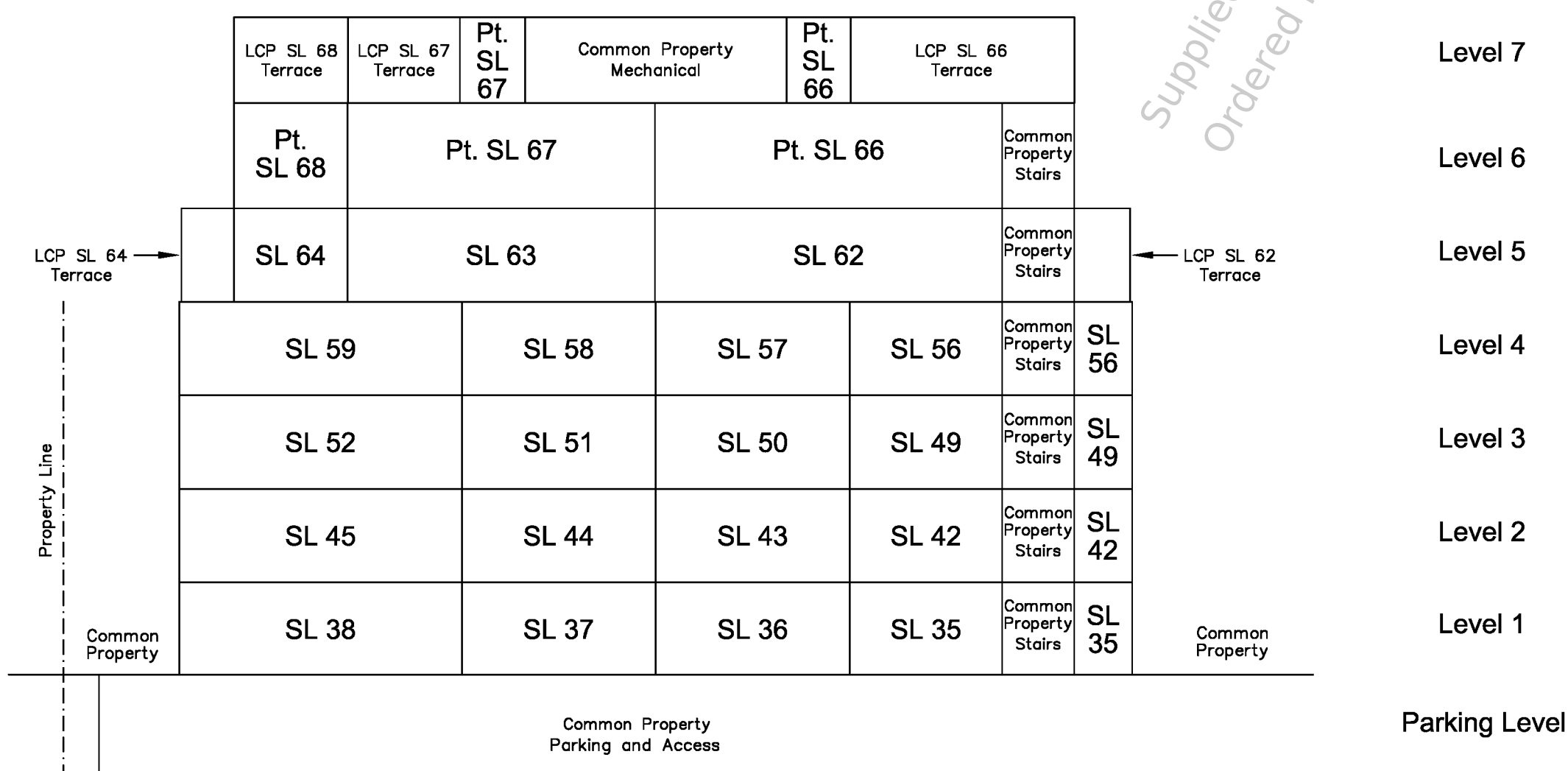
## STRATA PLAN EPS6167



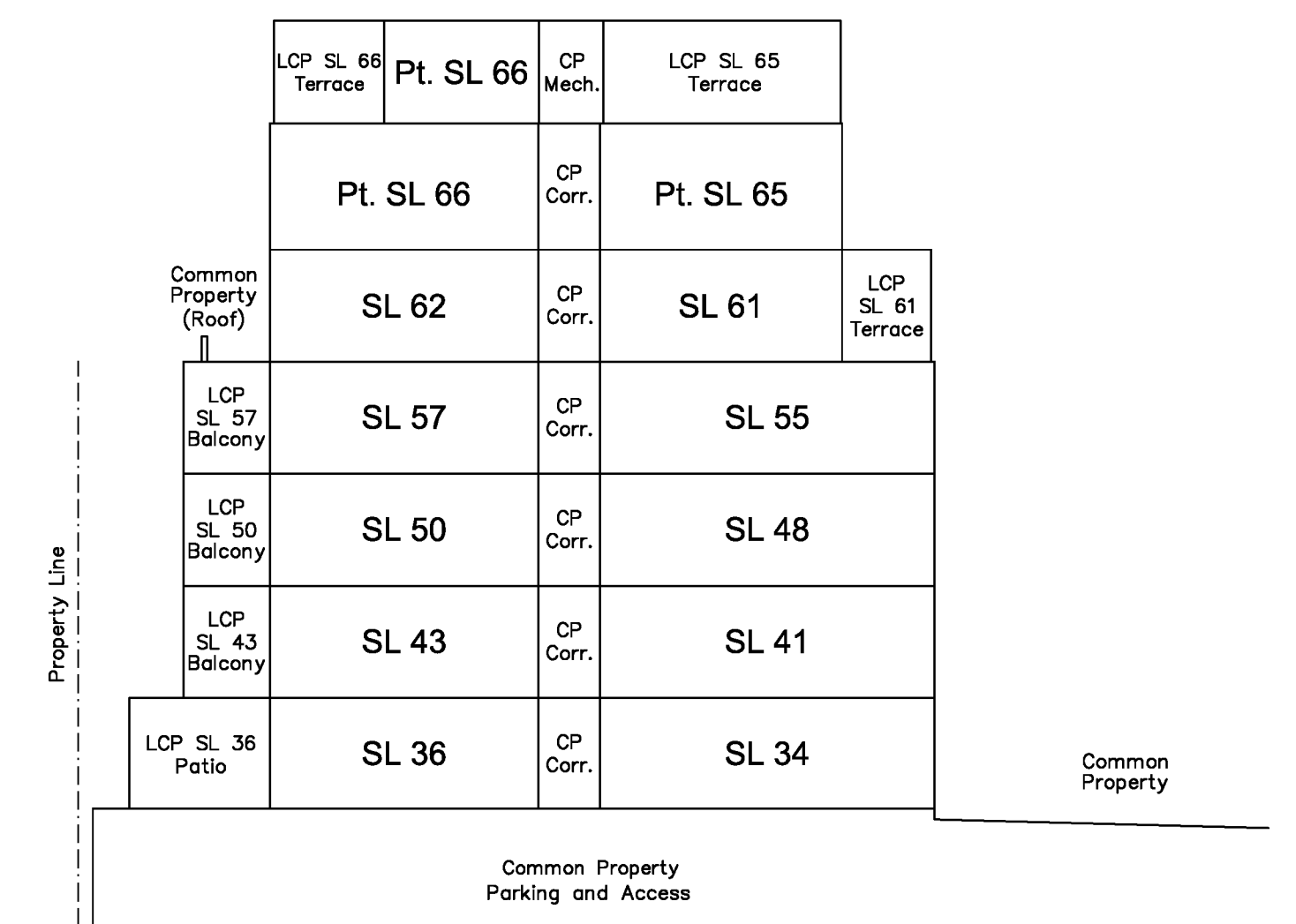
Section A - A'



Section B - B'



Section C - C'



Section D - D'

J.E. ANDERSON & ASSOCIATES  
 B.C. Land Surveyors - Consulting Engineers  
 Victoria-Nanaimo-Parkville-Campbell River, B.C.  
 File: 30418

V:\\_Projects\30418\08\02\Microsurvey\30418.dwg (STRATA PLAN)

10th day of August, 2020.

Ryan P. Hourston, BCLS 887

Ordered By: April Prinz of RE/MAX Camosun on 2025/12/11  
 Document Uploaded and Verified: 2022/03/02